



Light Efficiency:

39 Lumen/Watt

Light Quality:

CRI: 59.8

Color Temperature:

11328 K

Output: 1755 lm

Peak: 8006 cd

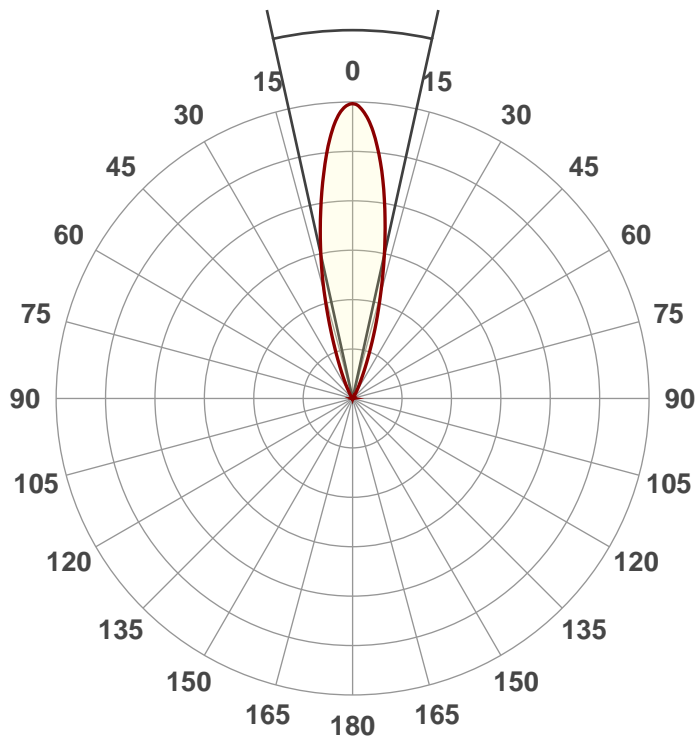
Power: 45.0 W

PF: 0.65



Beam Angle

24.9°



Product Name:

UB 9H

Test:

Full On No UV

Date:

4/19/2018

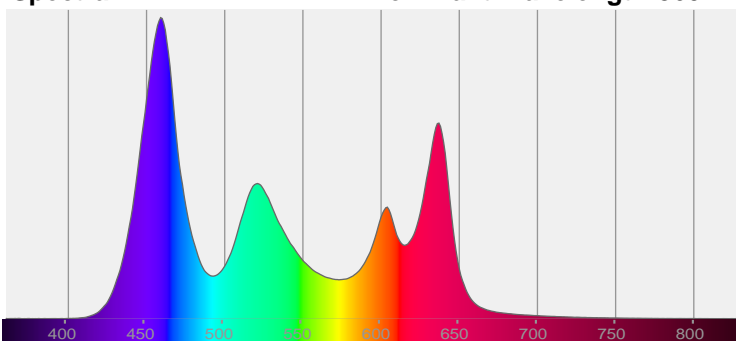
Note:



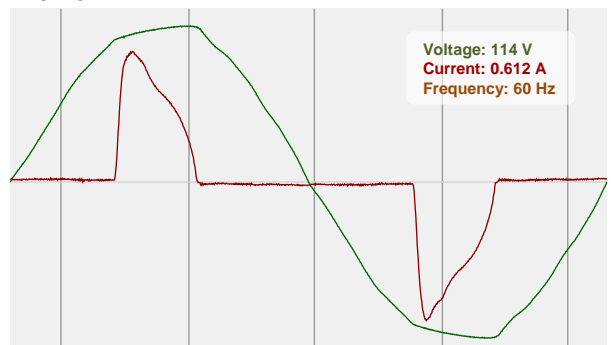
CIE 1931
x: 0.289
y: 0.258

Spectra

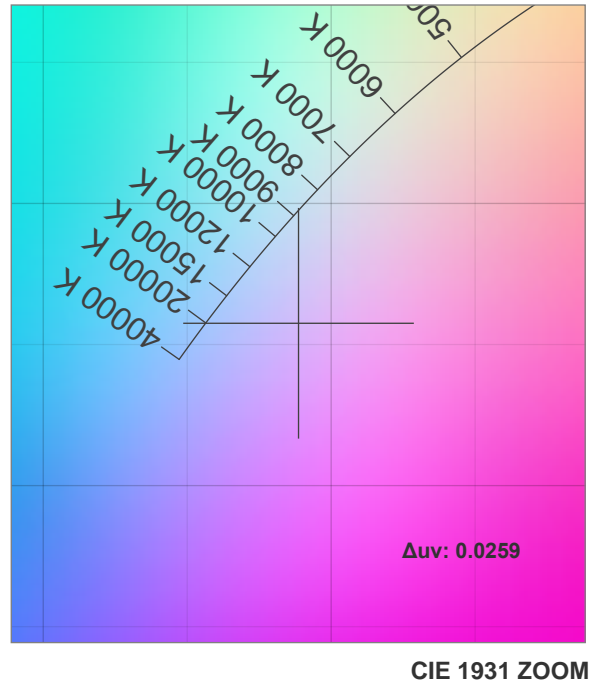
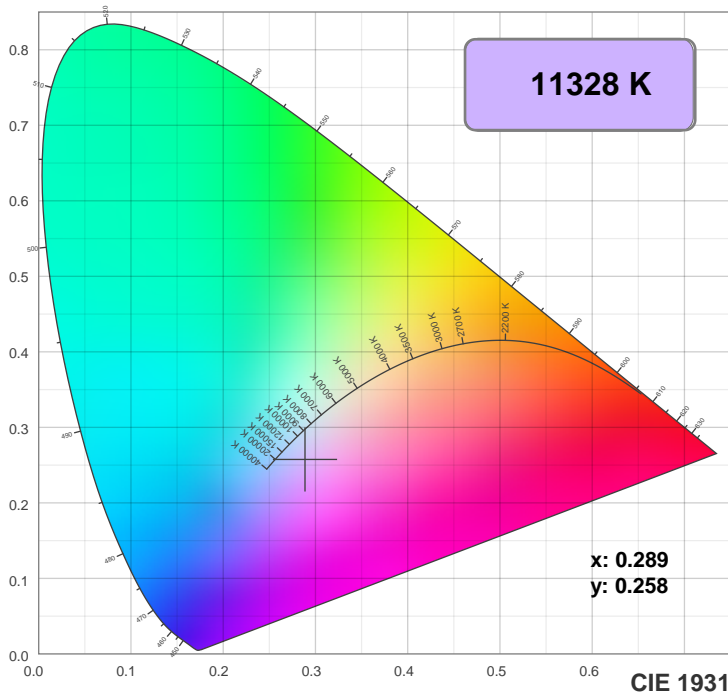
Dominant Wavelength: 360nm



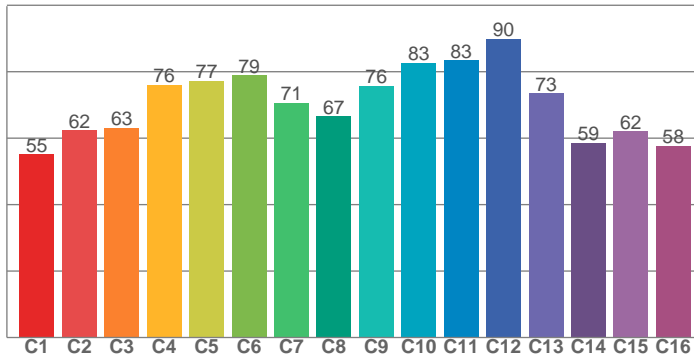
Power



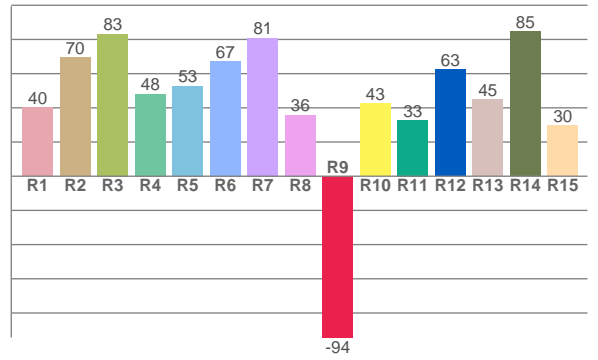
Color Details



TM30: 71.8



CRI: 59.8 (R1-R8)



CRI R values, only R1-R8 are used to calculate final CRI value

R1	R2	R3	R4	R5	R6	R7	R8	R9	R10	R11	R12	R13	R14	R15
40.1	69.6	83.3	48.2	52.9	67.3	80.9	35.9	-94.4	42.6	32.8	62.5	44.7	84.6	29.7

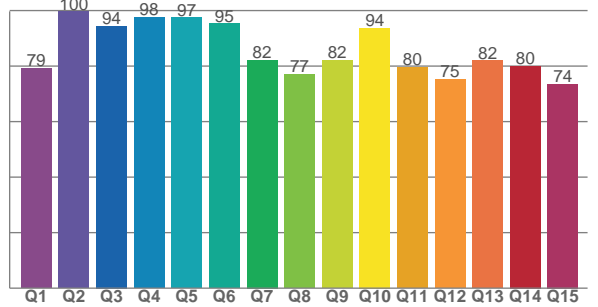
TM30 C values, 16 binned values out of total of 99 C values

C1	C2	C3	C4	C5	C6	C7	C8	C9	C10	C11	C12	C13	C14	C15	C16
55.2	62.3	63.0	76.0	77.3	78.9	70.5	66.5	75.7	82.8	83.4	90.0	73.5	58.5	62.0	57.7

CQS Q values

Q1	Q2	Q3	Q4	Q5	Q6	Q7	Q8	Q9	Q10	Q11	Q12	Q13	Q14	Q15
79.2	99.6	94.4	97.6	97.4	95.2	82.2	77.0	82.1	93.7	79.5	75.3	82.0	80.0	73.5

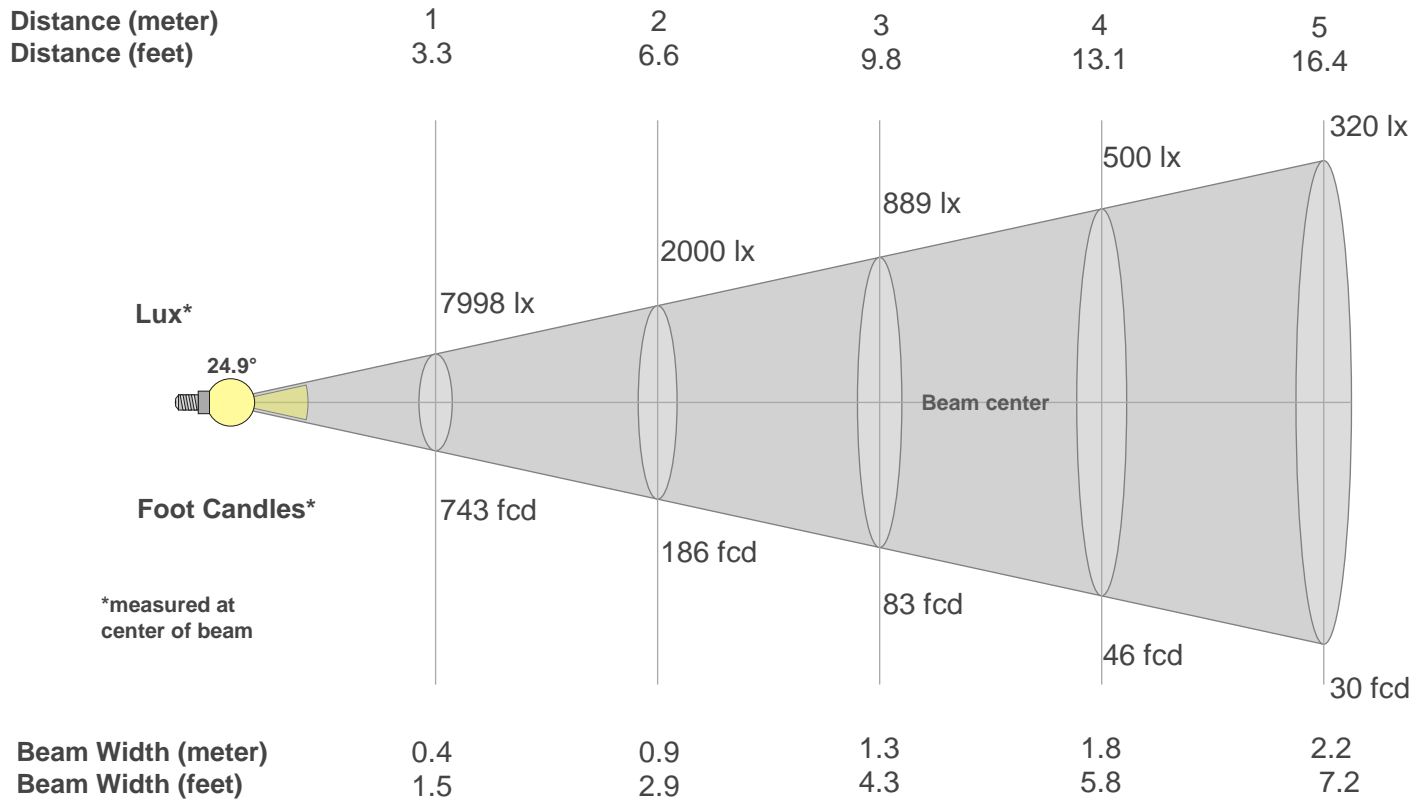
CQS: 83.4



Color Parameters

Color Temperature	Color Rendering Index	Red Component	Color Fidelity	Color Gamut	Color Quality Scale	Color Coordinate CIE 1931	Color Coordinate CIE 1931	Color Coordinate	Color Coordinate	Color Deviation from Black Body
CCT	CRI	CRI R9	TM30 Rf	TM30 Rg	CQS	x	y	u	v	Δuv
11328 K	59.8	-94.4	71.8	112.3	83.4	0.289	0.258	0.209	0.280	0.0259

Beam Details



Beam Intensities from 1-20m

m	1	2	3	4	5	6	7	8	9	10	11	12	13	14	15	16	17	18	19	20
ft	3.3	6.6	9.8	13.1	16.4	19.7	23	26.2	29.5	32.8	36.1	39.4	42.7	45.9	49.2	52.5	55.8	59.1	62.3	65.6
lx	7998	2000	889	500	320	222	163	125	99	80	66	56	47	41	36	31	28	25	22	20
fcd	743.1	185.8	82.6	46.4	29.7	20.6	15.2	11.6	9.2	7.4	6.1	5.2	4.4	3.8	3.3	2.9	2.6	2.3	2.1	1.9

Intensities in 0° C-plane

0°	2°	4°	6°	8°	10°	12°	14°	16°	18°	20°	22°	24°	26°	28°	30°	32°	34°	36°	38°
7998	7848	7407	6707	5875	5022	4187	3376	2575	1871	1307	899	611	402	262	173	119	83	62	46
100%	98%	93%	84%	73%	63%	52%	42%	32%	23%	16%	11%	8%	5%	3%	2%	1%	1%	1%	1%

Intensities in 90° C-plane

0°	2°	4°	6°	8°	10°	12°	14°	16°	18°	20°	22°	24°	26°	28°	30°	32°	34°	36°	38°
7998	7848	7407	6707	5875	5022	4187	3376	2575	1871	1307	899	611	402	262	173	119	83	62	46
100%	98%	93%	84%	73%	63%	52%	42%	32%	23%	16%	11%	8%	5%	3%	2%	1%	1%	1%	1%

Intensities in 180° C-plane

0°	2°	4°	6°	8°	10°	12°	14°	16°	18°	20°	22°	24°	26°	28°	30°	32°	34°	36°	38°
7998	7826	7381	6724	5941	5065	4195	3348	2579	1927	1357	923	612	406	267	174	114	77	58	45
100%	98%	92%	84%	74%	63%	52%	42%	32%	24%	17%	12%	8%	5%	3%	2%	1%	1%	1%	1%

Intensities in 270° C-plane

0°	2°	4°	6°	8°	10°	12°	14°	16°	18°	20°	22°	24°	26°	28°	30°	32°	34°	36°	38°
7998	7826	7381	6724	5941	5065	4195	3348	2579	1927	1357	923	612	406	267	174	114	77	58	45
100%	98%	92%	84%	74%	63%	52%	42%	32%	24%	17%	12%	8%	5%	3%	2%	1%	1%	1%	1%

Beam Angle 50%	Field Angle 10%	Cutoff Angle 2,5%	Intensity Ratio in 120° Cone	Intensity Ratio in 90° Cone
24.9°	45.3°	58.6°	98.8%	98.1%