



Light Efficiency:

46 Lumen/Watt

Light Quality:

CRI: 89.7

Color Temperature:

6147 K

Output: 1081 lm

Peak: 4612 cd

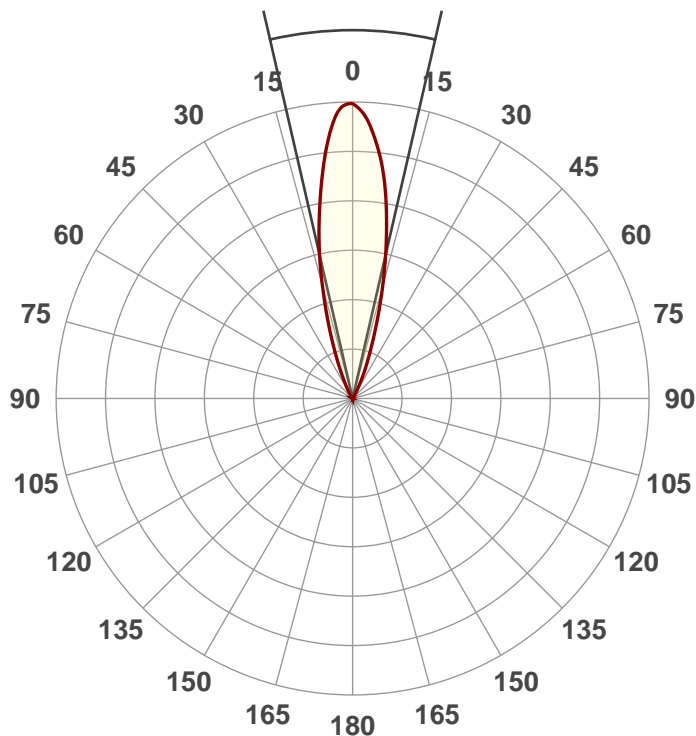
Power: 23.6 W

PF: 0.61



Beam Angle

25.9°



Product Name:

UB 6H

Test:

CRI Value

Date:

4/20/2018

Note:

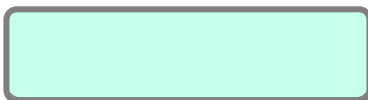
R @ 143

G @ 255

B @ 75

W @ 255

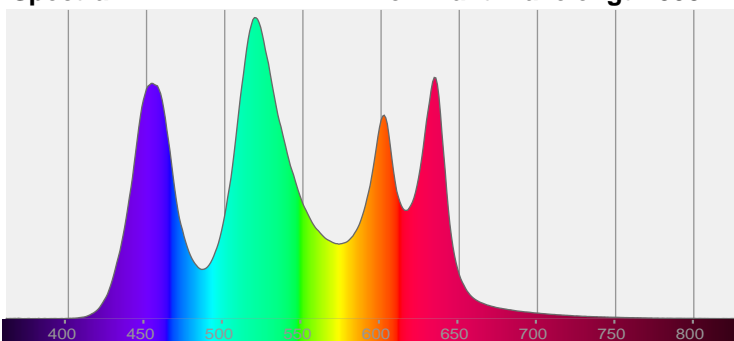
A @ 255



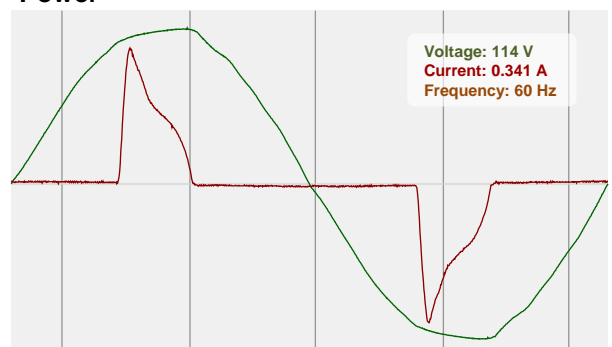
CIE 1931
x: 0.317
y: 0.357

Spectra

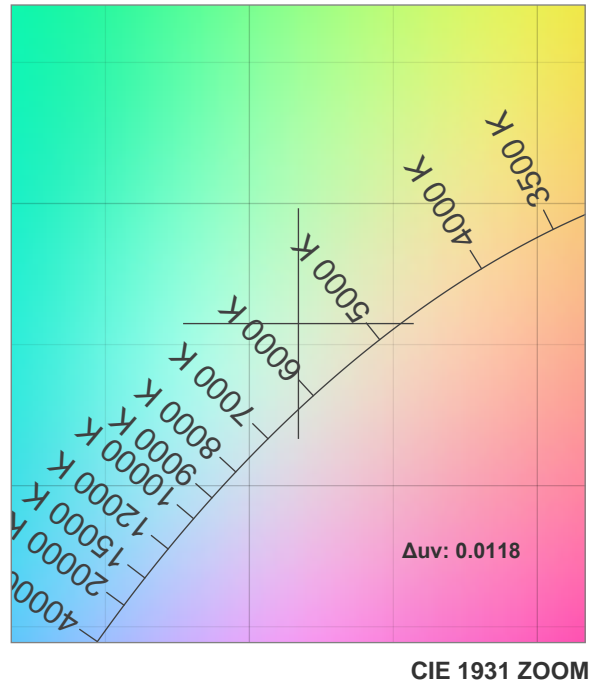
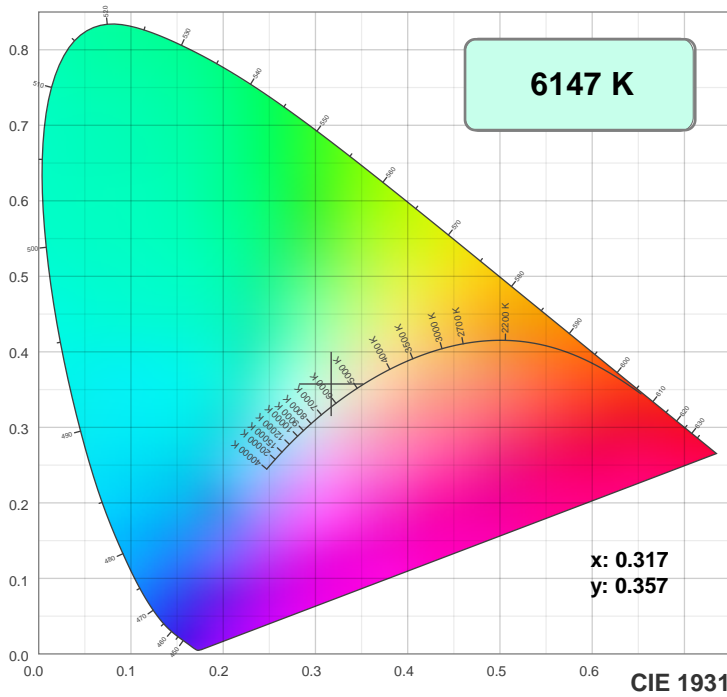
Dominant Wavelength: 558nm



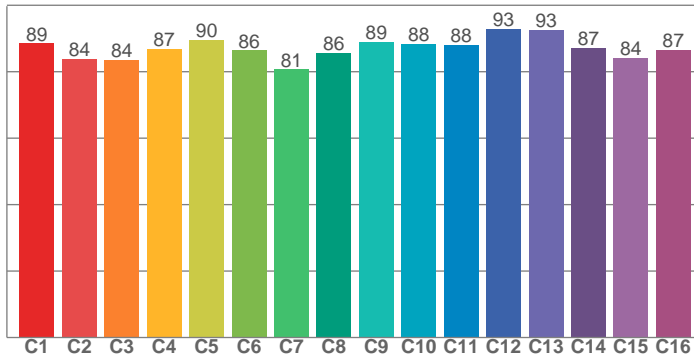
Power



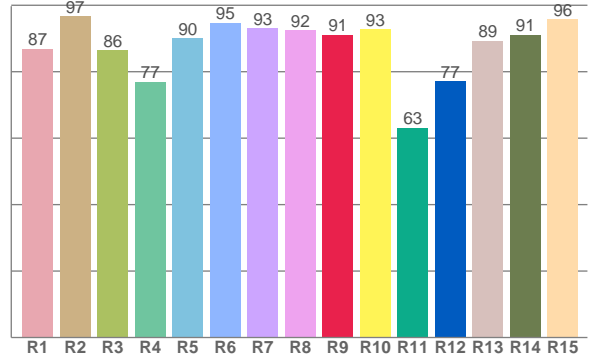
Color Details



TM30: 87.1



CRI: 89.7 (R1-R8)



CRI R values, only R1-R8 are used to calculate final CRI value

R1	R2	R3	R4	R5	R6	R7	R8	R9	R10	R11	R12	R13	R14	R15
86.9	96.7	86.4	77.0	90.0	94.7	93.0	92.5	91.1	92.7	63.2	77.1	89.3	91.2	95.8

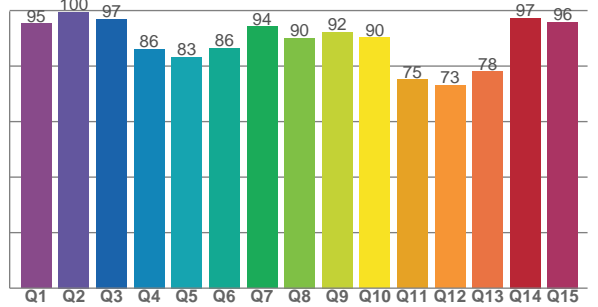
TM30 C values, 16 binned values out of total of 99 C values

C1	C2	C3	C4	C5	C6	C7	C8	C9	C10	C11	C12	C13	C14	C15	C16
88.5	83.9	83.6	86.9	89.6	86.5	80.7	85.6	89.1	88.5	88.0	93.0	92.6	87.1	84.2	86.6

CQS Q values

Q1	Q2	Q3	Q4	Q5	Q6	Q7	Q8	Q9	Q10	Q11	Q12	Q13	Q14	Q15
95.3	99.5	97.0	86.2	83.3	86.5	94.3	90.1	92.2	90.3	75.0	73.1	78.0	97.4	95.8

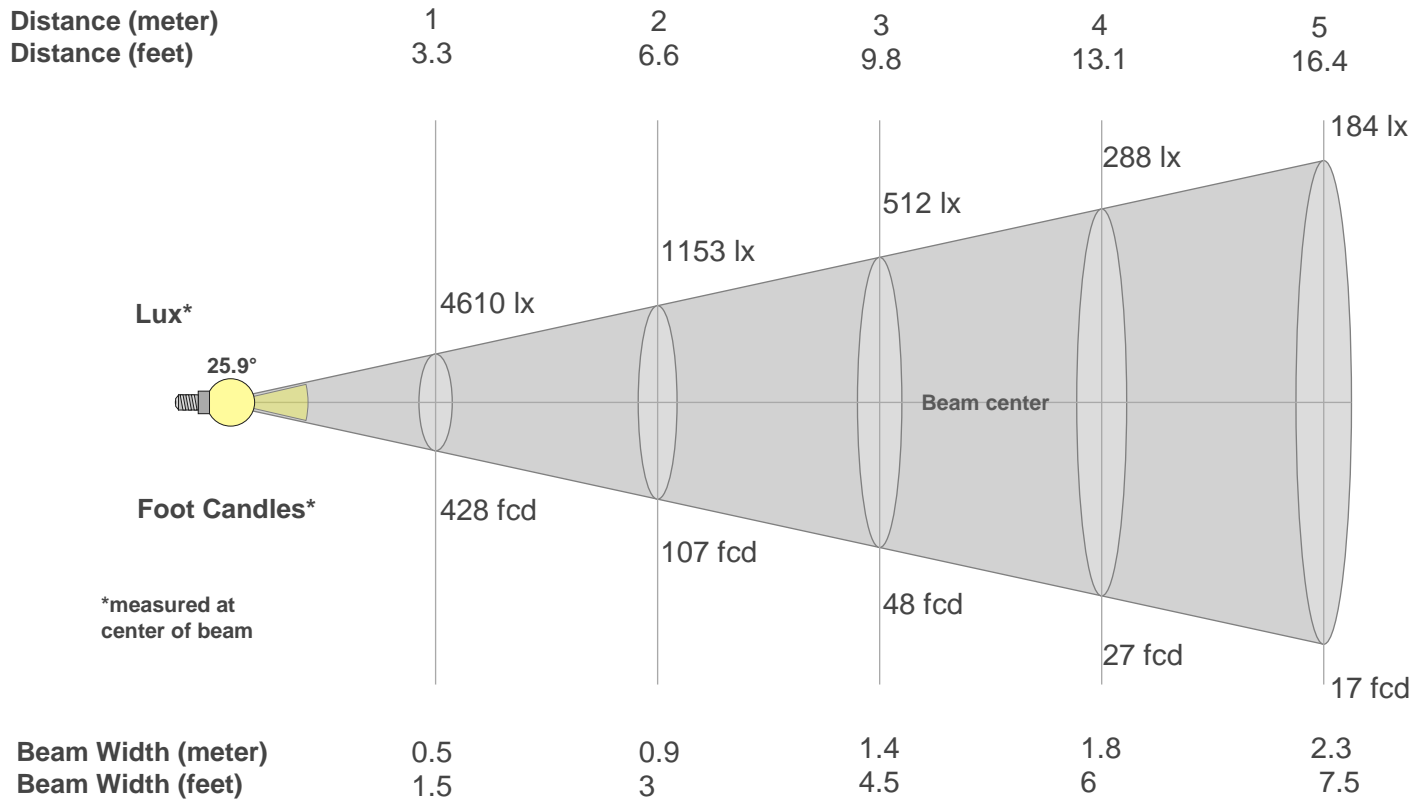
CQS: 86.3



Color Parameters

Color Temperature	Color Rendering Index	Red Component	Color Fidelity	Color Gamut	Color Quality Scale	Color Coordinate CIE 1931	Color Coordinate CIE 1931	Color Coordinate	Color Coordinate	Color Deviation from Black Body
CCT	CRI	CRI R9	TM30 Rf	TM30 Rg	CQS	x	y	u	v	Δuv
6147 K	89.7	91.1	87.1	105.5	86.3	0.317	0.357	0.191	0.322	0.0118

Beam Details



Beam Intensities from 1-20m

m	1	2	3	4	5	6	7	8	9	10	11	12	13	14	15	16	17	18	19	20
ft	3.3	6.6	9.8	13.1	16.4	19.7	23	26.2	29.5	32.8	36.1	39.4	42.7	45.9	49.2	52.5	55.8	59.1	62.3	65.6
lx	4610	1153	512	288	184	128	94	72	57	46	38	32	27	24	20	18	16	14	13	12
fcd	428.3	107.1	47.6	26.8	17.1	11.9	8.7	6.7	5.3	4.3	3.5	3	2.5	2.2	1.9	1.7	1.5	1.3	1.2	1.1

Intensities in 0° C-plane

0°	2°	4°	6°	8°	10°	12°	14°	16°	18°	20°	22°	24°	26°	28°	30°	32°	34°	36°	38°
4610	4570	4332	3933	3461	2982	2525	2062	1604	1214	883	623	427	288	197	135	93	65	46	36
100%	99%	94%	85%	75%	65%	55%	45%	35%	26%	19%	14%	9%	6%	4%	3%	2%	1%	1%	1%

Intensities in 90° C-plane

0°	2°	4°	6°	8°	10°	12°	14°	16°	18°	20°	22°	24°	26°	28°	30°	32°	34°	36°	38°
4610	4570	4332	3933	3461	2982	2525	2062	1604	1214	883	623	427	288	197	135	93	65	46	36
100%	99%	94%	85%	75%	65%	55%	45%	35%	26%	19%	14%	9%	6%	4%	3%	2%	1%	1%	1%

Intensities in 180° C-plane

0°	2°	4°	6°	8°	10°	12°	14°	16°	18°	20°	22°	24°	26°	28°	30°	32°	34°	36°	38°
4610	4477	4224	3895	3504	3036	2539	2052	1592	1184	857	610	426	275	166	103	68	48	35	28
100%	97%	92%	84%	76%	66%	55%	45%	35%	26%	19%	13%	9%	6%	4%	2%	1%	1%	1%	1%

Intensities in 270° C-plane

0°	2°	4°	6°	8°	10°	12°	14°	16°	18°	20°	22°	24°	26°	28°	30°	32°	34°	36°	38°
4610	4477	4224	3895	3504	3036	2539	2052	1592	1184	857	610	426	275	166	103	68	48	35	28
100%	97%	92%	84%	76%	66%	55%	45%	35%	26%	19%	13%	9%	6%	4%	2%	1%	1%	1%	1%

Beam Angle 50%	Field Angle 10%	Cutoff Angle 2,5%	Intensity Ratio in 120° Cone	Intensity Ratio in 90° Cone
25.9°	47.2°	60.4°	99.3%	98.3%