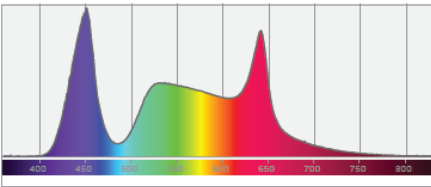
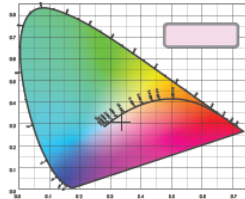


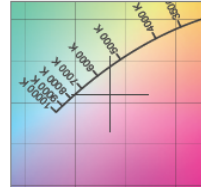
Spectral distribution



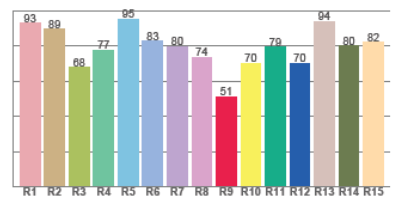
Color coordinates



Zoom color point



CRI R values



Photometric Test Report

*Due to additional product enhancements, an updated version of this report may be available online. Please check www.adj.com for the latest revision/update of this report.

WiFLY EXR HEX5 IP



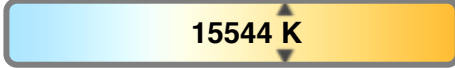
Light Efficiency:



Light Quality:



Color Temperature:



Output: 1225 lm

Peak: 6508 cd

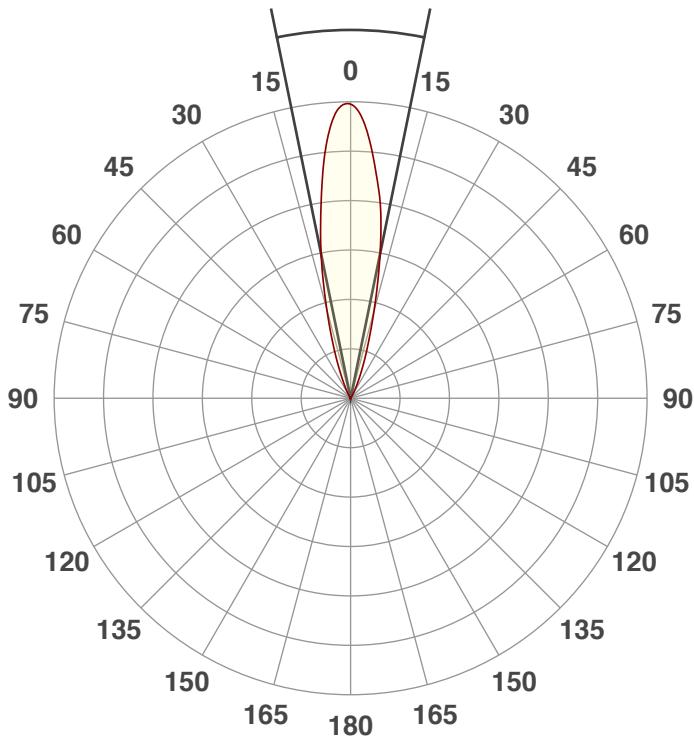
Power: 51.9 W

PF: 0.63



Beam Angle

23.1°



Test:

Full On

Date:

10/18/2018

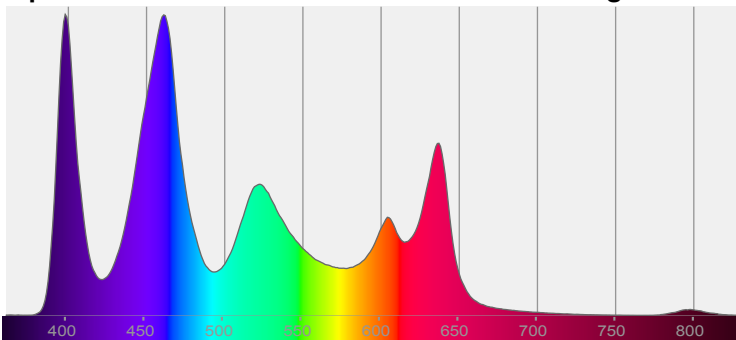
Note:



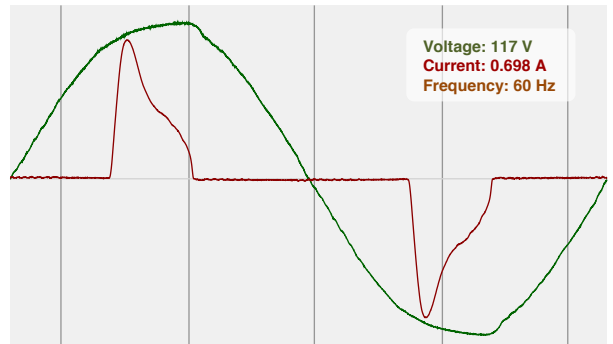
CIE 1931
x: 0.277
y: 0.249

Spectra

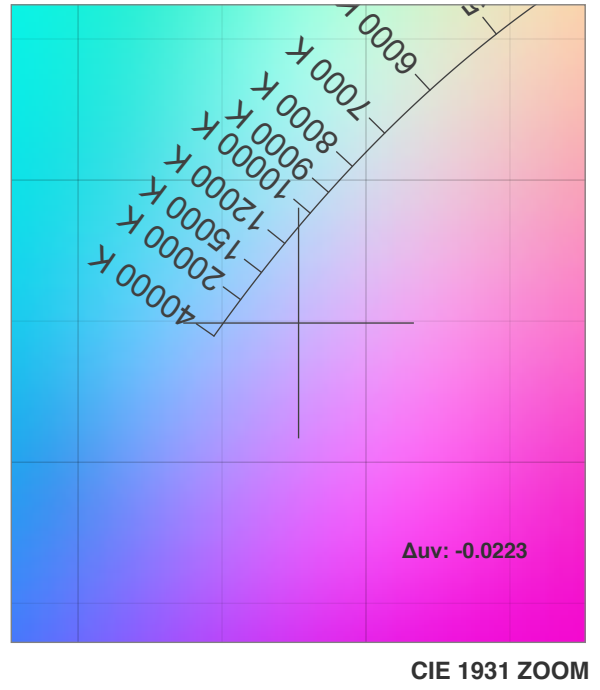
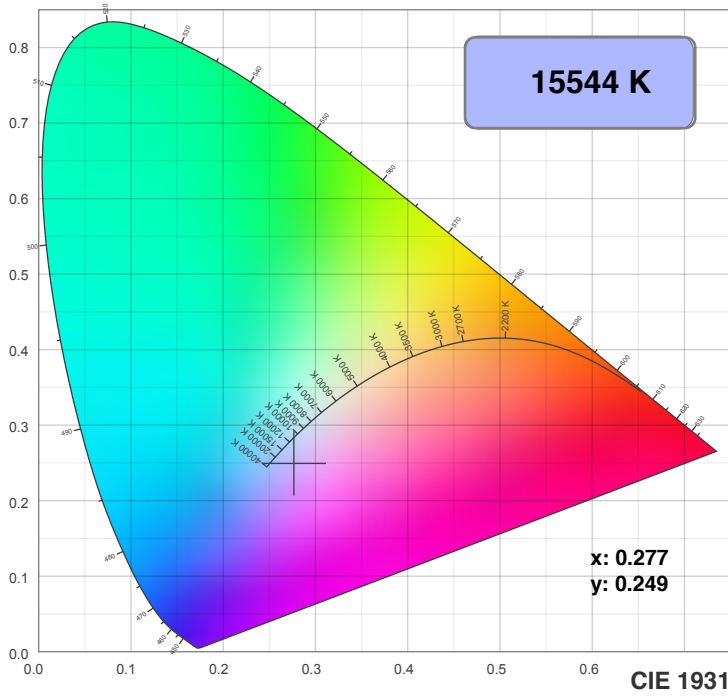
Dominant Wavelength: 434nm



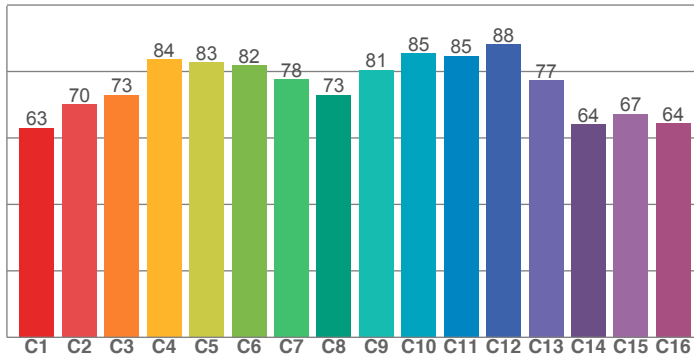
Power



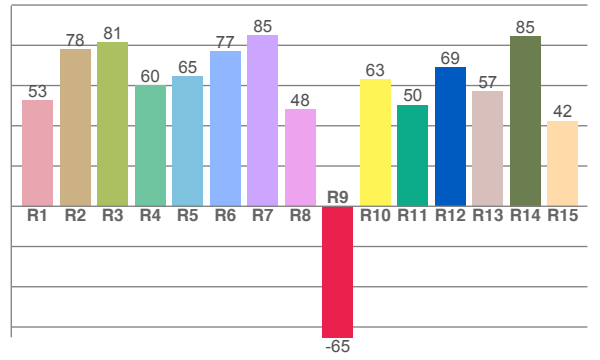
Color Details



TM30: 77.1



CRI: 68.4 (R1-R8)



CRI R values, only R1-R8 are used to calculate final CRI value

R1	R2	R3	R4	R5	R6	R7	R8	R9	R10	R11	R12	R13	R14	R15
52.8	77.9	81.4	60.2	64.7	77.2	85.0	48.2	-65.1	63.0	50.4	69.0	57.3	84.6	42.5

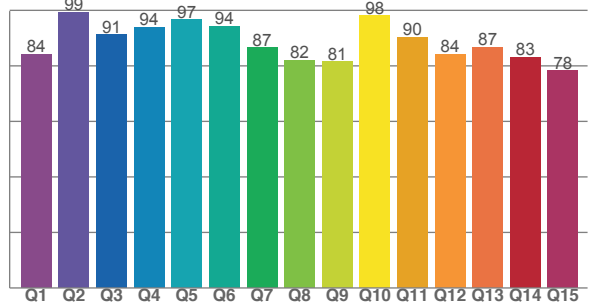
TM30 C values, 16 binned values out of total of 99 C values

C1	C2	C3	C4	C5	C6	C7	C8	C9	C10	C11	C12	C13	C14	C15	C16
63.0	70.1	73.0	83.6	82.8	81.9	77.6	72.9	80.5	85.5	84.7	88.2	77.4	64.0	67.3	64.4

CQS Q values

Q1	Q2	Q3	Q4	Q5	Q6	Q7	Q8	Q9	Q10	Q11	Q12	Q13	Q14	Q15
84.2	99.4	91.3	94.0	96.6	94.3	86.7	82.1	81.5	98.0	90.4	84.1	86.7	83.1	78.3

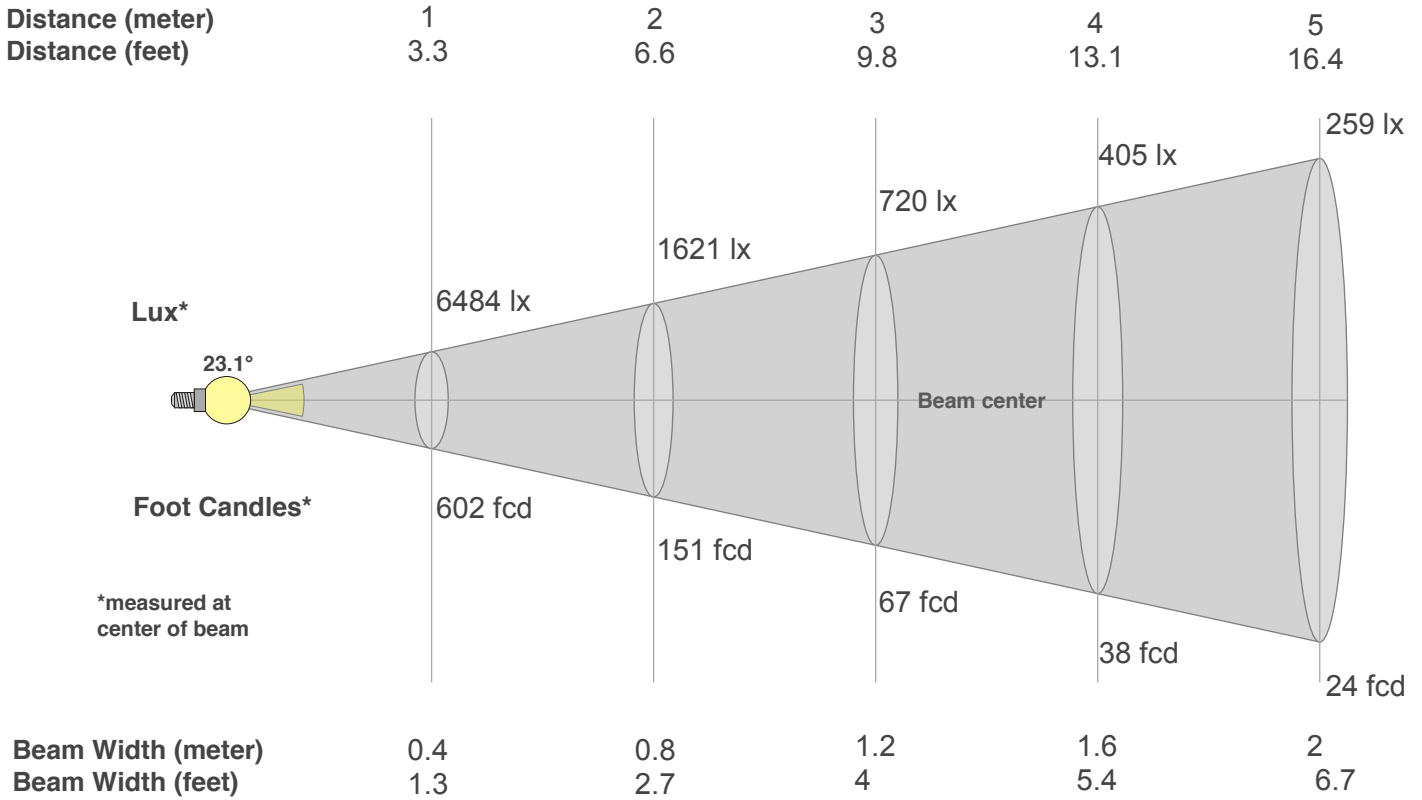
CQS: 87.0



Color Parameters

Color Temperature	Color Rendering Index	Red Component	Color Fidelity	Color Gamut	Color Quality Scale	Color Coordinate CIE 1931	Color Coordinate CIE 1931	Color Coordinate	Color Coordinate	Color Deviation from Black Body
CCT	CRI	CRI R9	TM30 Rf	TM30 Rg	CQS	x	y	u	v	Δuv
15544 K	68.4	-65.1	77.1	110.8	87.0	0.277	0.249	0.203	0.275	-0.0223

Beam Details



Beam Intensities from 1-20m

m	1	2	3	4	5	6	7	8	9	10	11	12	13	14	15	16	17	18	19	20
ft	3.3	6.6	9.8	13.1	16.4	19.7	23	26.2	29.5	32.8	36.1	39.4	42.7	45.9	49.2	52.5	55.8	59.1	62.3	65.6
lx	6484	1621	720	405	259	180	132	101	80	65	54	45	38	33	29	25	22	20	18	16
fcd	602.4	150.6	66.9	37.6	24.1	16.7	12.3	9.4	7.4	6	5	4.2	3.6	3.1	2.7	2.4	2.1	1.9	1.7	1.5

Intensities in 0° C-plane

0°	2°	4°	6°	8°	10°	12°	14°	16°	18°	20°	22°	24°	26°	28°	30°	32°	34°	36°	38°
6484	6435	6083	5429	4608	3818	3086	2360	1743	1251	878	593	389	251	162	99	59	38	24	14
100%	99%	94%	84%	71%	59%	48%	36%	27%	19%	14%	9%	6%	4%	3%	2%	1%	1%	0%	0%

Intensities in 90° C-plane

0°	2°	4°	6°	8°	10°	12°	14°	16°	18°	20°	22°	24°	26°	28°	30°	32°	34°	36°	38°
6484	6435	6083	5429	4608	3818	3086	2360	1743	1251	878	593	389	251	162	99	59	38	24	14
100%	99%	94%	84%	71%	59%	48%	36%	27%	19%	14%	9%	6%	4%	3%	2%	1%	1%	0%	0%

Intensities in 180° C-plane

0°	2°	4°	6°	8°	10°	12°	14°	16°	18°	20°	22°	24°	26°	28°	30°	32°	34°	36°	38°
6484	6260	5767	5148	4548	3859	3077	2334	1710	1233	890	618	416	265	158	91	51	30	18	11
100%	97%	89%	79%	70%	60%	47%	36%	26%	19%	14%	10%	6%	4%	2%	1%	1%	0%	0%	0%

Intensities in 270° C-plane

0°	2°	4°	6°	8°	10°	12°	14°	16°	18°	20°	22°	24°	26°	28°	30°	32°	34°	36°	38°
6484	6260	5767	5148	4548	3859	3077	2334	1710	1233	890	618	416	265	158	91	51	30	18	11
100%	97%	89%	79%	70%	60%	47%	36%	26%	19%	14%	10%	6%	4%	2%	1%	1%	0%	0%	0%

Beam Angle 50%	Field Angle 10%	Cutoff Angle 2,5%	Intensity Ratio in 120° Cone	Intensity Ratio in 90° Cone
23.1°	43.2°	55.9°	100.0%	99.9%

WiFLY EXR HEX5 IP



Light Efficiency:



Light Quality:



Color Temperature:



Output: 1354 lm

Peak: 7084 cd

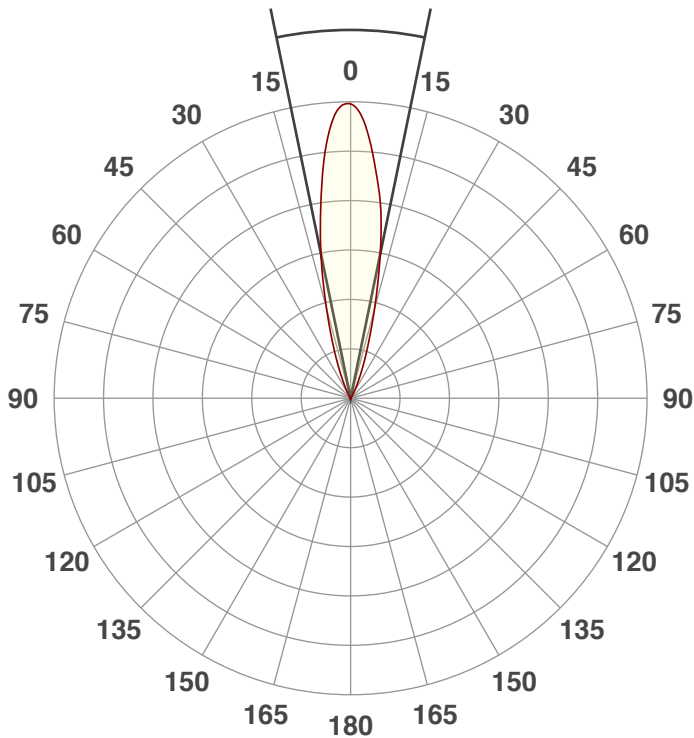
Power: 52.6 W

PF: 0.65



Beam Angle

23.2°



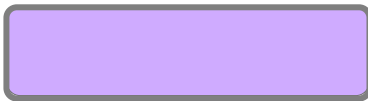
Test:

Full On

Date:

10/18/2018

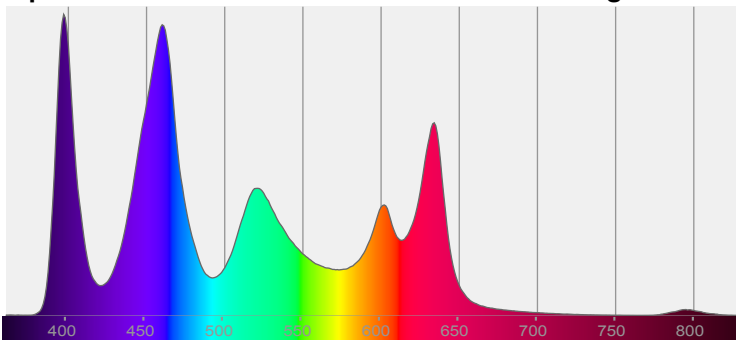
Note:



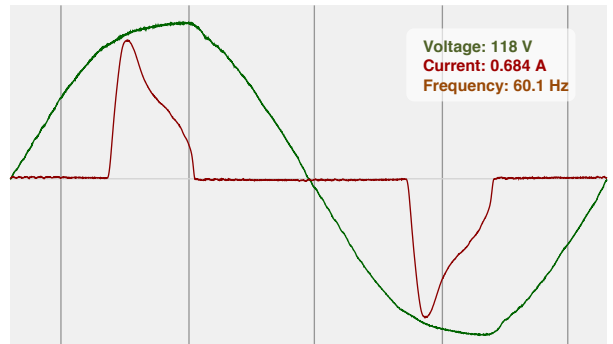
CIE 1931
x: 0.290
y: 0.253

Spectra

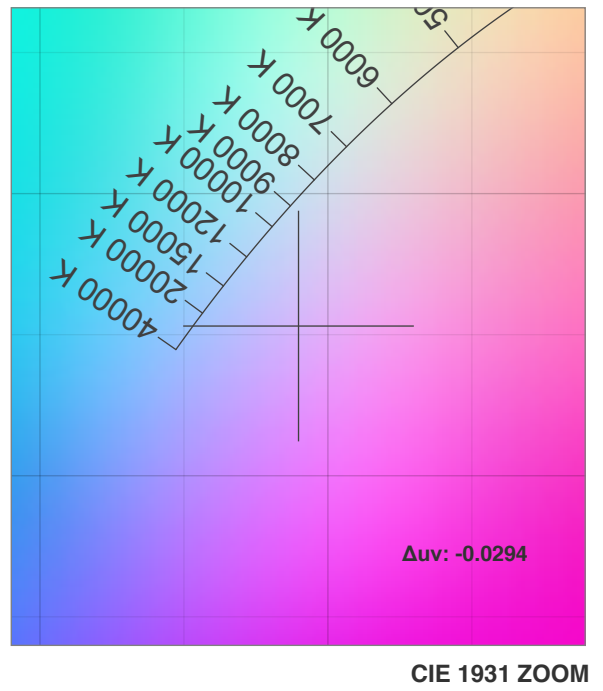
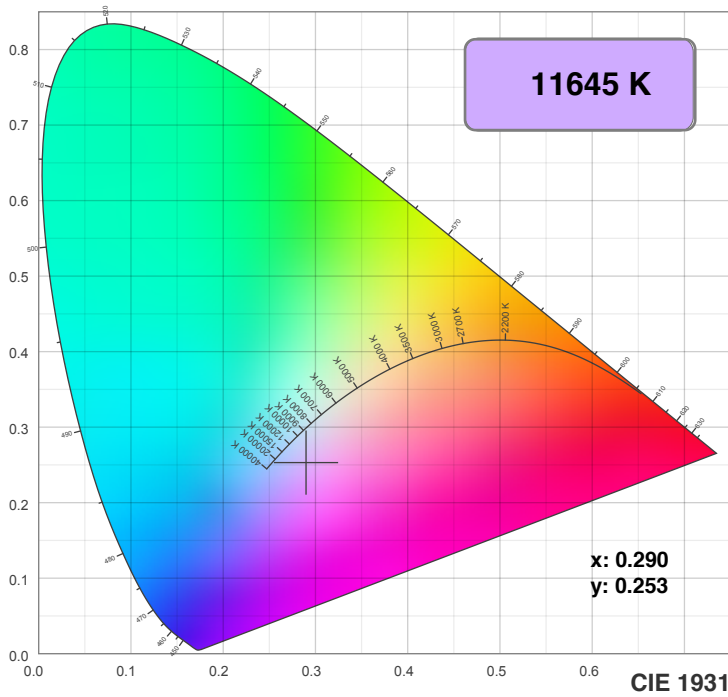
Dominant Wavelength: 360nm



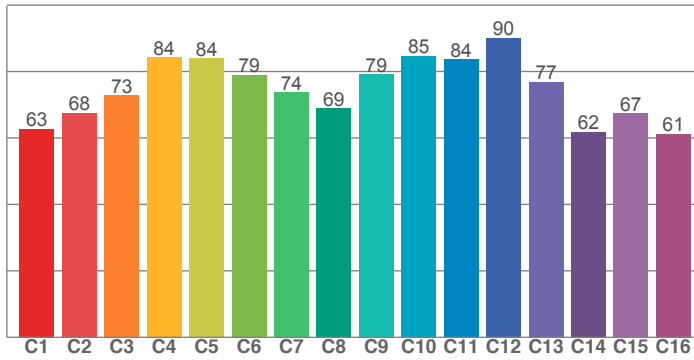
Power



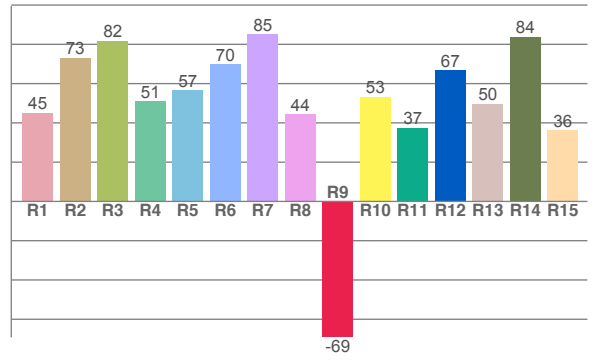
Color Details



TM30: 76.0



CRI: 63.4 (R1-R8)



CRI R values, only R1-R8 are used to calculate final CRI value

R1	R2	R3	R4	R5	R6	R7	R8	R9	R10	R11	R12	R13	R14	R15
45.1	73.2	81.8	51.1	56.6	70.0	85.1	44.3	-69.2	53.2	37.4	66.8	49.7	83.9	36.2

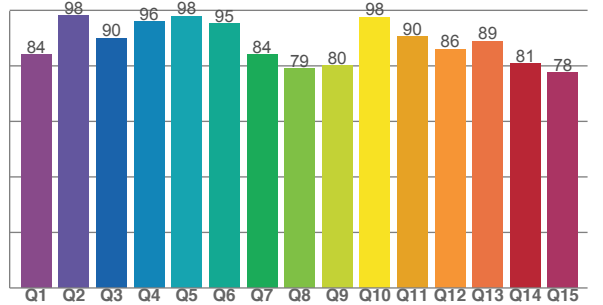
TM30 C values, 16 binned values out of total of 99 C values

C1	C2	C3	C4	C5	C6	C7	C8	C9	C10	C11	C12	C13	C14	C15	C16
62.7	67.5	72.8	84.3	83.9	78.9	73.7	68.9	79.2	84.7	83.6	90.2	76.9	61.8	67.3	61.2

CQS Q values

Q1	Q2	Q3	Q4	Q5	Q6	Q7	Q8	Q9	Q10	Q11	Q12	Q13	Q14	Q15
84.1	98.1	90.0	96.0	98.0	95.2	84.1	79.1	80.0	97.5	90.5	86.0	88.9	80.8	77.6

CQS: 86.4



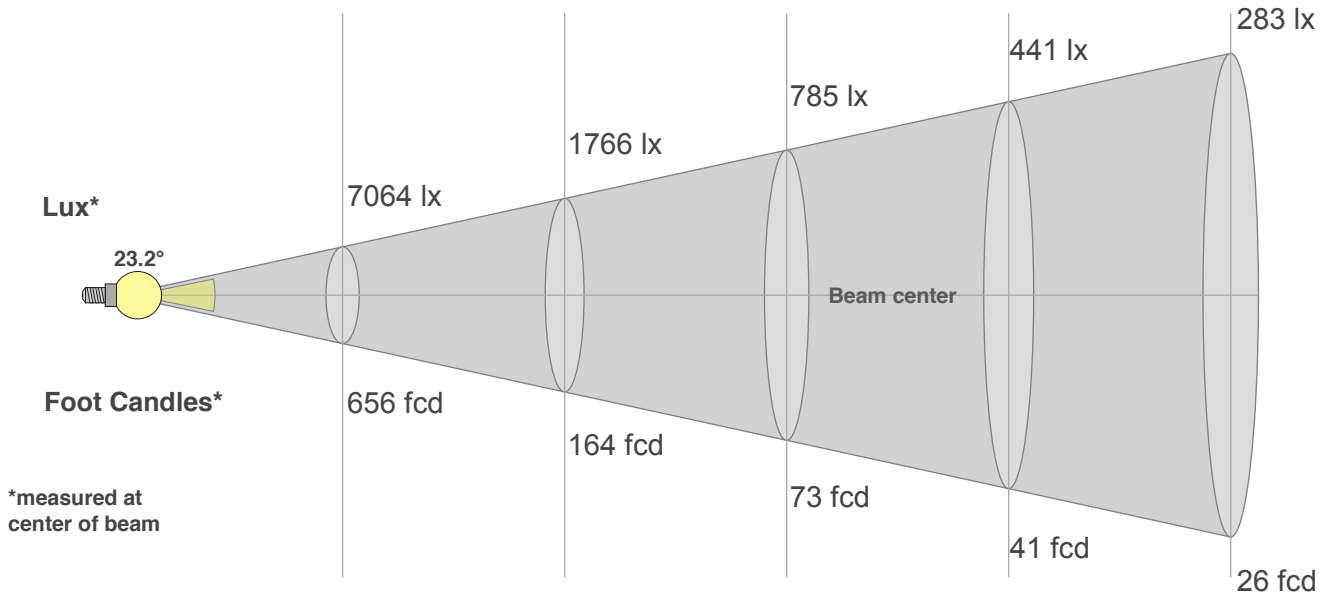
Color Parameters

Color Temperature	Color Rendering Index	Red Component	Color Fidelity	Color Gamut	Color Quality Scale	Color Coordinate CIE 1931	Color Coordinate CIE 1931	Color Coordinate	Color Coordinate	Color Deviation from Black Body
CCT	CRI	CRI R9	TM30 Rf	TM30 Rg	CQS	x	y	u	v	Δuv
11645 K	63.4	-69.2	76.0	113.2	86.4	0.290	0.253	0.212	0.278	-0.0294

Beam Details

Distance (meter)
Distance (feet)

1 2 3 4 5
3.3 6.6 9.8 13.1 16.4



Beam Width (meter)
Beam Width (feet)

0.4 0.8 1.2 1.6 2.1
1.4 2.7 4 5.4 6.7

Beam Intensities from 1-20m

m	1	2	3	4	5	6	7	8	9	10	11	12	13	14	15	16	17	18	19	20
ft	3.3	6.6	9.8	13.1	16.4	19.7	23	26.2	29.5	32.8	36.1	39.4	42.7	45.9	49.2	52.5	55.8	59.1	62.3	65.6
lx	7064	1766	785	441	283	196	144	110	87	71	58	49	42	36	31	28	24	22	20	18
fcd	656.2	164.1	72.9	41	26.2	18.2	13.4	10.3	8.1	6.6	5.4	4.6	3.9	3.3	2.9	2.6	2.3	2	1.8	1.6

Intensities in 0° C-plane

0°	2°	4°	6°	8°	10°	12°	14°	16°	18°	20°	22°	24°	26°	28°	30°	32°	34°	36°	38°
7064	7009	6611	5912	5039	4184	3387	2602	1923	1389	986	669	437	285	182	112	67	44	29	17
100%	99%	94%	84%	71%	59%	48%	37%	27%	20%	14%	9%	6%	4%	3%	2%	1%	1%	0%	0%

Intensities in 90° C-plane

0°	2°	4°	6°	8°	10°	12°	14°	16°	18°	20°	22°	24°	26°	28°	30°	32°	34°	36°	38°
7064	7009	6611	5912	5039	4184	3387	2602	1923	1389	986	669	437	285	182	112	67	44	29	17
100%	99%	94%	84%	71%	59%	48%	37%	27%	20%	14%	9%	6%	4%	3%	2%	1%	1%	0%	0%

Intensities in 180° C-plane

0°	2°	4°	6°	8°	10°	12°	14°	16°	18°	20°	22°	24°	26°	28°	30°	32°	34°	36°	38°
7064	6828	6295	5616	4964	4225	3378	2578	1902	1378	998	698	473	306	187	110	64	36	23	15
100%	97%	89%	80%	70%	60%	48%	36%	27%	20%	14%	10%	7%	4%	3%	2%	1%	1%	0%	0%

Intensities in 270° C-plane

0°	2°	4°	6°	8°	10°	12°	14°	16°	18°	20°	22°	24°	26°	28°	30°	32°	34°	36°	38°
7064	6828	6295	5616	4964	4225	3378	2578	1902	1378	998	698	473	306	187	110	64	36	23	15
100%	97%	89%	80%	70%	60%	48%	36%	27%	20%	14%	10%	7%	4%	3%	2%	1%	1%	0%	0%

Beam Angle 50%	Field Angle 10%	Cutoff Angle 2,5%	Intensity Ratio in 120° Cone	Intensity Ratio in 90° Cone
23.2°	43.6°	56.3°	100.0%	99.9%

WiFLY EXR HEX5 IP



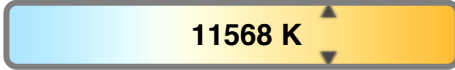
Light Efficiency:



Light Quality:



Color Temperature:



Output: 1304 lm

Peak: 6869 cd

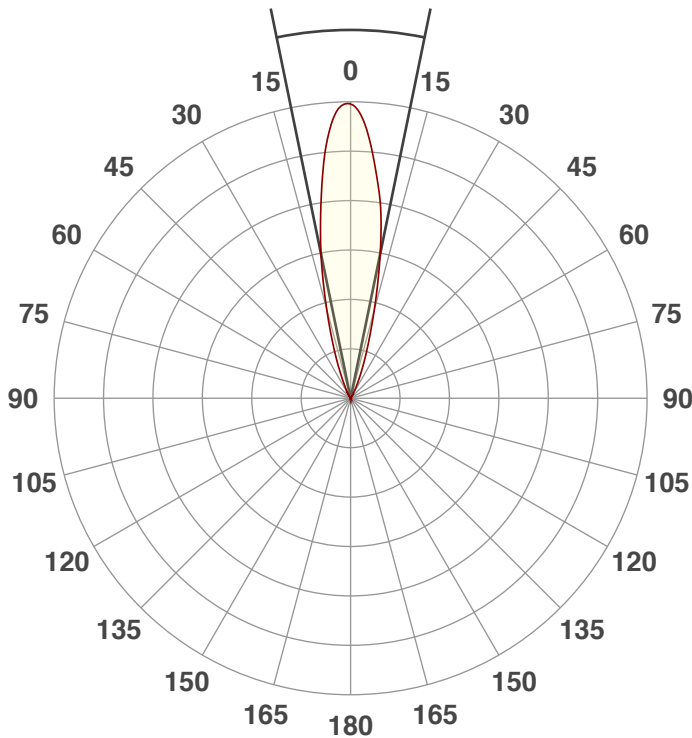
Power: 52.5 W

PF: 0.64

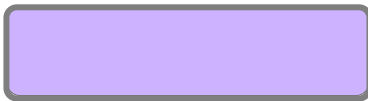


Beam Angle

23.2°



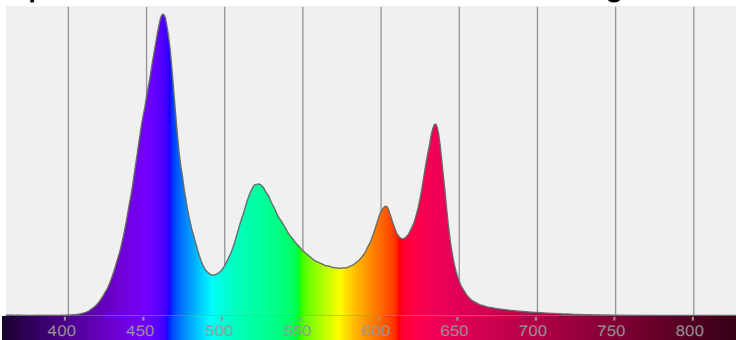
Test: Full On No UV
Date: 10/18/2018
Note:



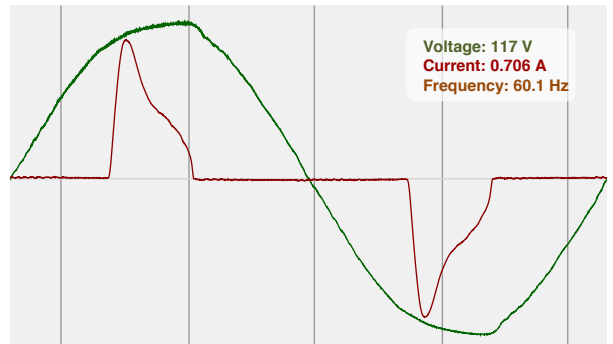
CIE 1931
x: 0.288
y: 0.257

Spectra

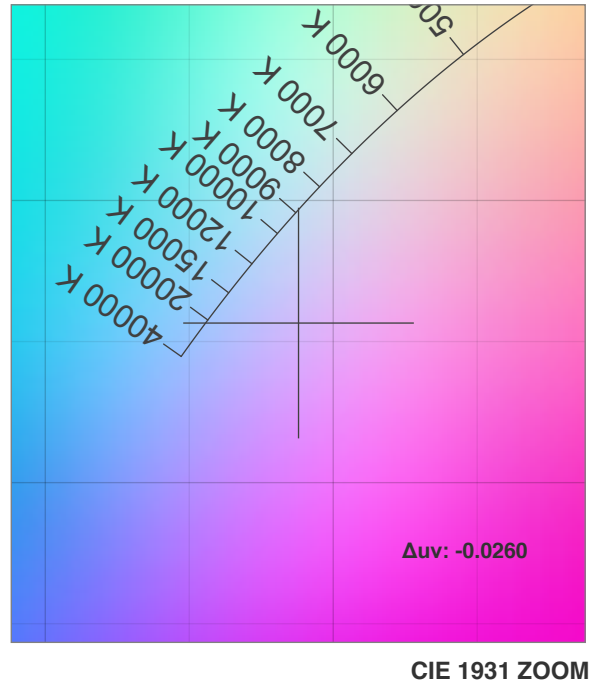
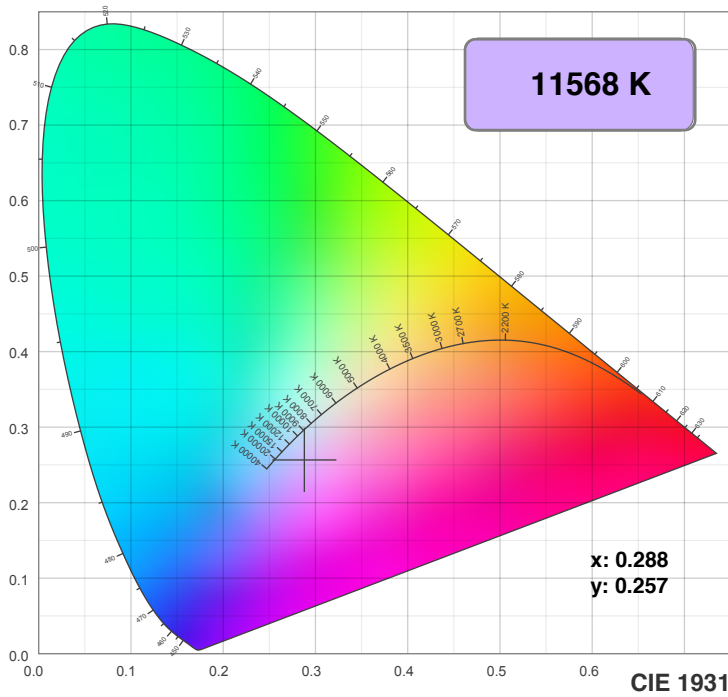
Dominant Wavelength: 360nm



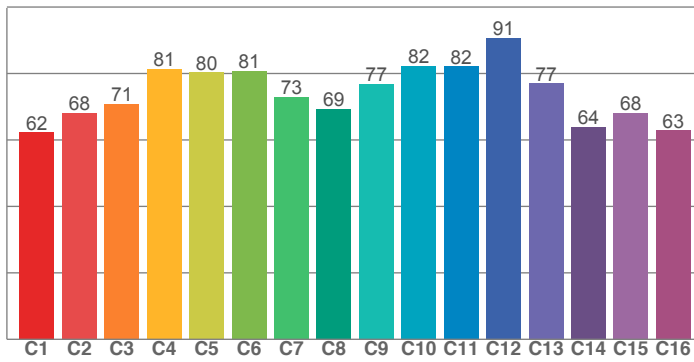
Power



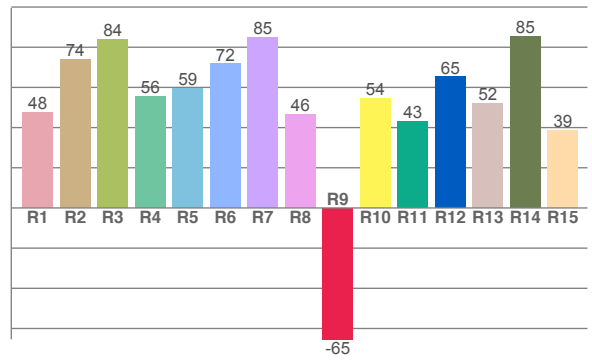
Color Details



TM30: 75.3



CRI: 65.5 (R1-R8)



CRI R values, only R1-R8 are used to calculate final CRI value

R1	R2	R3	R4	R5	R6	R7	R8	R9	R10	R11	R12	R13	R14	R15
47.8	74.0	83.7	55.7	59.4	71.7	85.1	46.5	-65.4	54.3	42.9	65.2	52.0	85.2	38.7

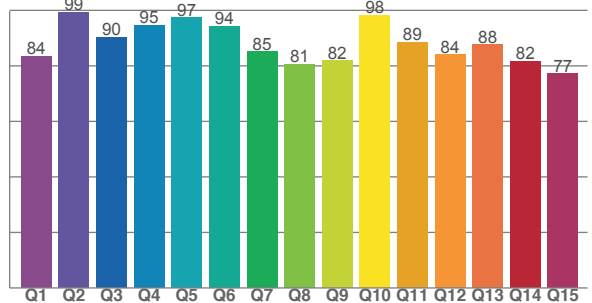
TM30 C values, 16 binned values out of total of 99 C values

C1	C2	C3	C4	C5	C6	C7	C8	C9	C10	C11	C12	C13	C14	C15	C16
62.3	68.2	70.9	81.4	80.3	80.8	72.9	69.4	76.9	82.2	82.2	90.6	77.1	63.9	68.1	62.9

CQS Q values

Q1	Q2	Q3	Q4	Q5	Q6	Q7	Q8	Q9	Q10	Q11	Q12	Q13	Q14	Q15
83.6	99.4	90.4	94.6	97.4	94.3	85.0	80.6	81.8	98.2	88.6	84.0	87.7	81.7	77.2

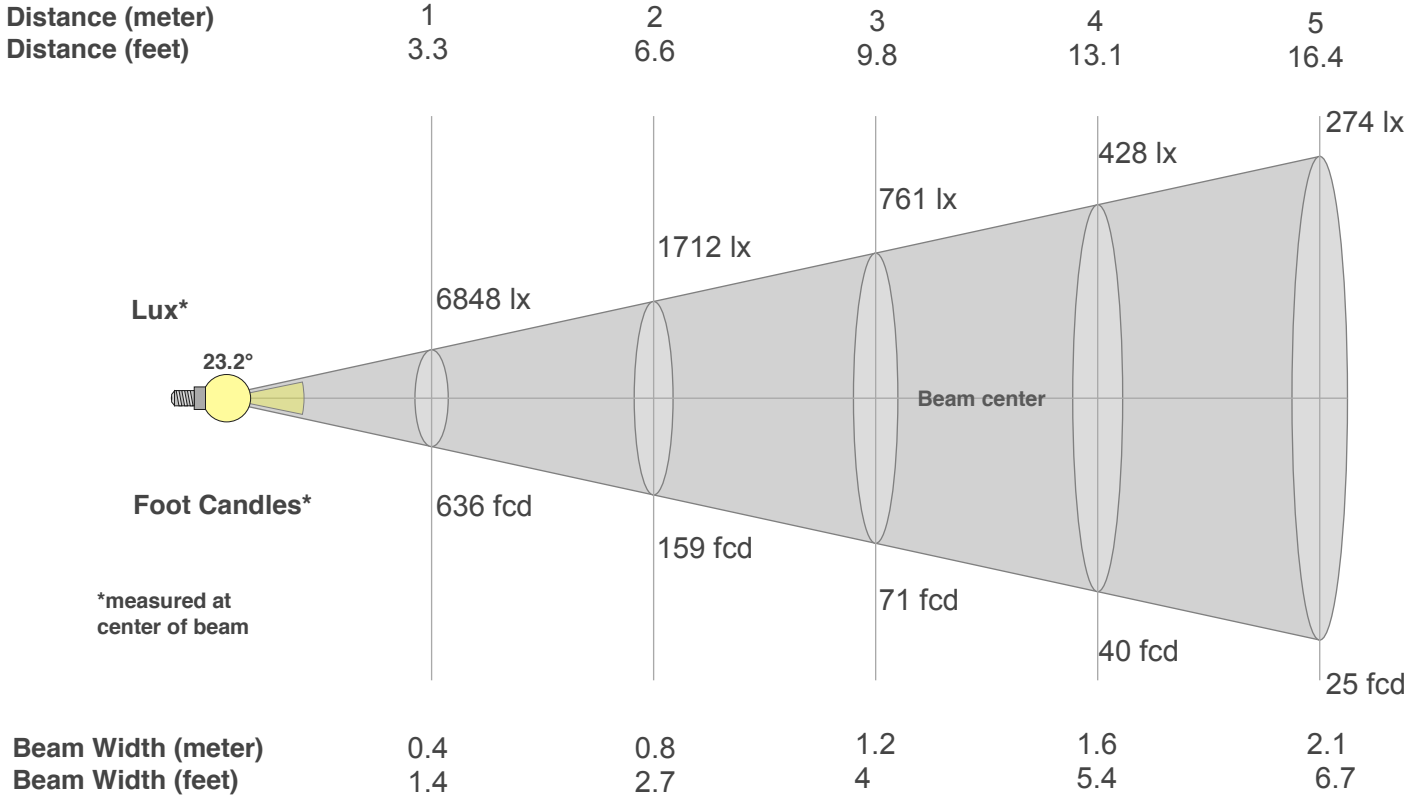
CQS: 86.4



Color Parameters

Color Temperature	Color Rendering Index	Red Component	Color Fidelity	Color Gamut	Color Quality Scale	Color Coordinate CIE 1931	Color Coordinate CIE 1931	Color Coordinate	Color Coordinate	Color Deviation from Black Body
CCT	CRI	CRI R9	TM30 Rf	TM30 Rg	CQS	x	y	u	v	Δuv
11568 K	65.5	-65.4	75.3	111.1	86.4	0.288	0.257	0.209	0.280	-0.0260

Beam Details



Beam Intensities from 1-20m

m	1	2	3	4	5	6	7	8	9	10	11	12	13	14	15	16	17	18	19	20
ft	3.3	6.6	9.8	13.1	16.4	19.7	23	26.2	29.5	32.8	36.1	39.4	42.7	45.9	49.2	52.5	55.8	59.1	62.3	65.6
lx	6848	1712	761	428	274	190	140	107	85	68	57	48	41	35	30	27	24	21	19	17
fcd	636.2	159.1	70.7	39.8	25.4	17.7	13	9.9	7.9	6.4	5.3	4.4	3.8	3.2	2.8	2.5	2.2	2	1.8	1.6

Intensities in 0° C-plane

0°	2°	4°	6°	8°	10°	12°	14°	16°	18°	20°	22°	24°	26°	28°	30°	32°	34°	36°	38°
6848	6791	6408	5738	4871	4044	3273	2504	1849	1336	942	638	419	271	173	107	64	42	27	17
100%	99%	94%	84%	71%	59%	48%	37%	27%	20%	14%	9%	6%	4%	3%	2%	1%	1%	0%	0%

Intensities in 90° C-plane

0°	2°	4°	6°	8°	10°	12°	14°	16°	18°	20°	22°	24°	26°	28°	30°	32°	34°	36°	38°
6848	6791	6408	5738	4871	4044	3273	2504	1849	1336	942	638	419	271	173	107	64	42	27	17
100%	99%	94%	84%	71%	59%	48%	37%	27%	20%	14%	9%	6%	4%	3%	2%	1%	1%	0%	0%

Intensities in 180° C-plane

0°	2°	4°	6°	8°	10°	12°	14°	16°	18°	20°	22°	24°	26°	28°	30°	32°	34°	36°	38°
6848	6616	6100	5441	4810	4087	3266	2483	1826	1326	957	666	450	290	175	103	60	35	22	12
100%	97%	89%	79%	70%	60%	48%	36%	27%	19%	14%	10%	7%	4%	3%	1%	1%	1%	0%	0%

Intensities in 270° C-plane

0°	2°	4°	6°	8°	10°	12°	14°	16°	18°	20°	22°	24°	26°	28°	30°	32°	34°	36°	38°
6848	6616	6100	5441	4810	4087	3266	2483	1826	1326	957	666	450	290	175	103	60	35	22	12
100%	97%	89%	79%	70%	60%	48%	36%	27%	19%	14%	10%	7%	4%	3%	1%	1%	1%	0%	0%

Beam Angle 50%	Field Angle 10%	Cutoff Angle 2,5%	Intensity Ratio in 120° Cone	Intensity Ratio in 90° Cone
23.2°	43.4°	56.1°	100.0%	99.9%

WiFLY EXR HEX5 IP



Light Efficiency:



Light Quality:



Color Temperature:



Output: 1387 lm

Peak: 7255 cd

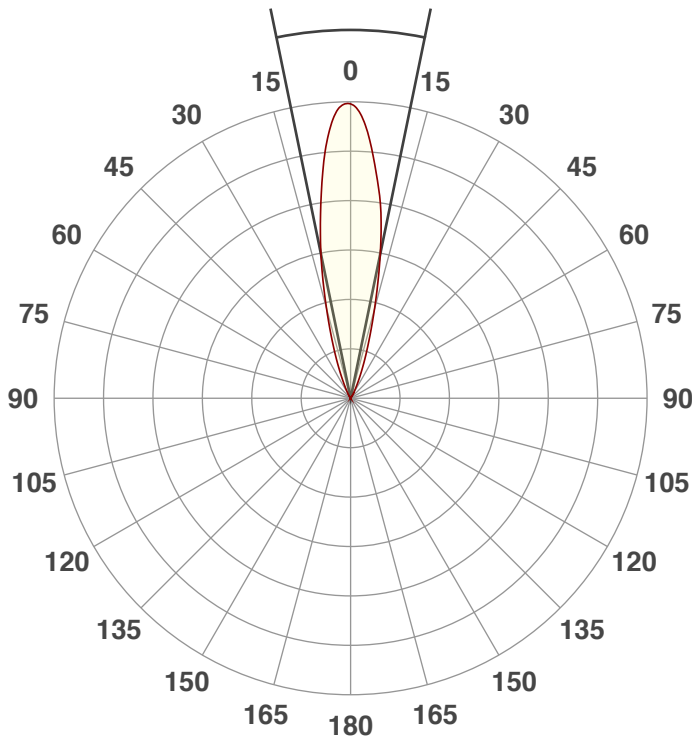
Power: 54.9 W

PF: 0.67



Beam Angle

23.2°



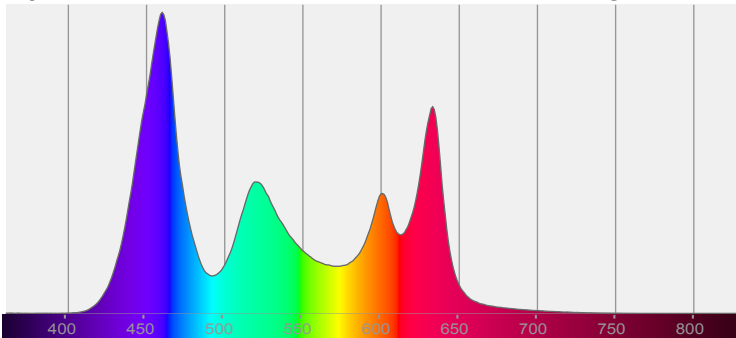
Test: Full On No UV
Date: 10/18/2018
Note:



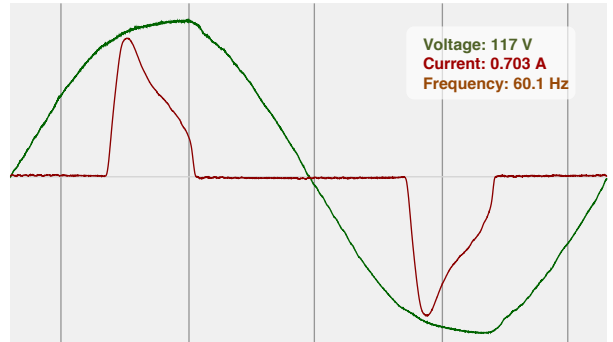
CIE 1931
x: 0.296
y: 0.259

Spectra

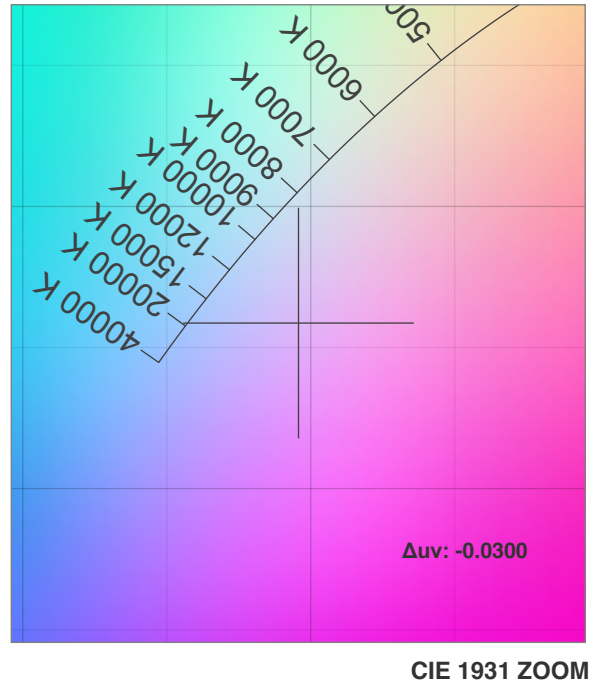
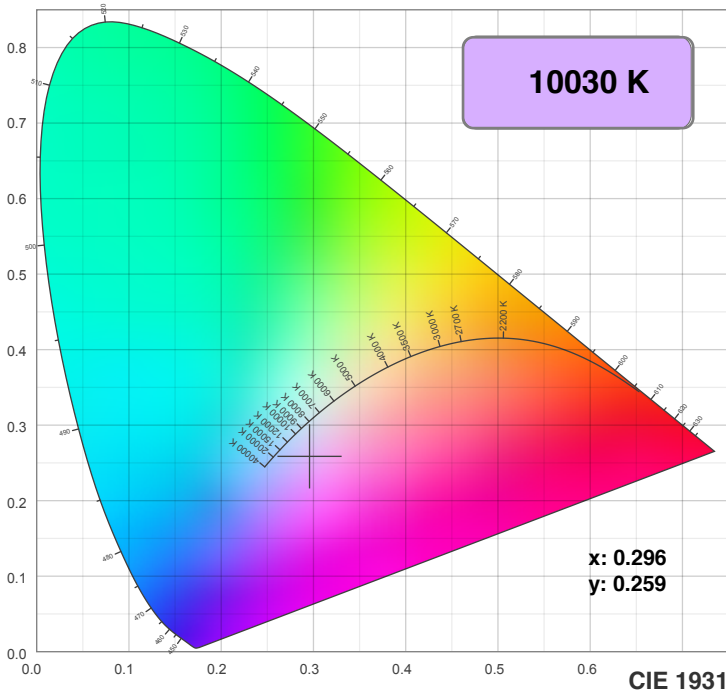
Dominant Wavelength: 360nm



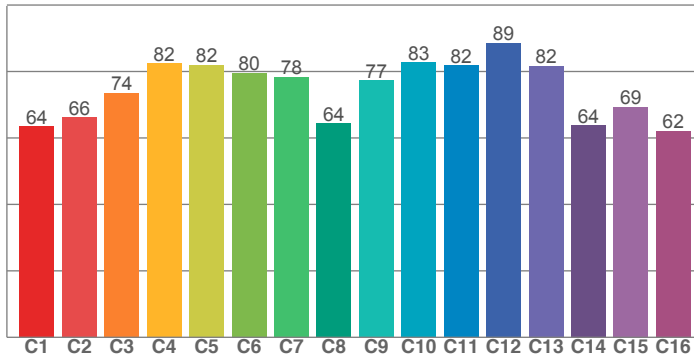
Power



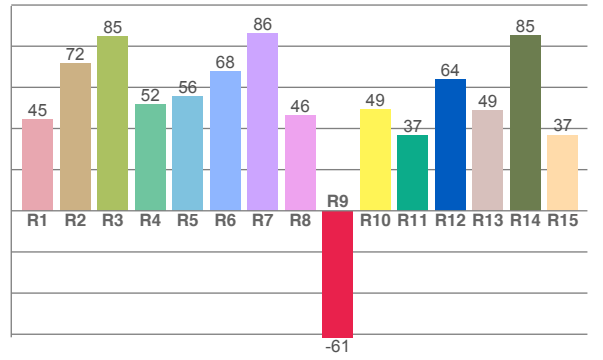
Color Details



TM30: 75.4



CRI: 63.5 (R1-R8)



CRI R values, only R1-R8 are used to calculate final CRI value

R1	R2	R3	R4	R5	R6	R7	R8	R9	R10	R11	R12	R13	R14	R15
44.6	71.7	84.7	51.6	55.5	67.6	86.1	46.4	-61.5	49.5	36.5	63.9	48.7	85.3	36.9

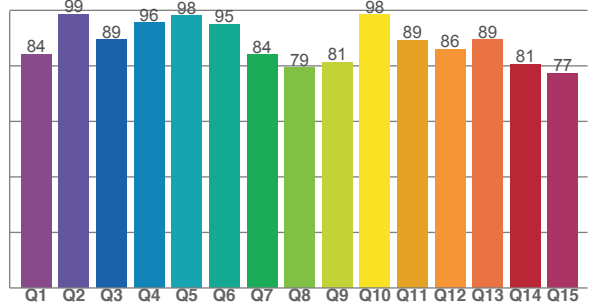
TM30 C values, 16 binned values out of total of 99 C values

C1	C2	C3	C4	C5	C6	C7	C8	C9	C10	C11	C12	C13	C14	C15	C16
63.5	66.2	73.6	82.4	82.0	79.6	78.3	64.4	77.3	82.7	81.8	88.6	81.7	63.8	69.4	62.1

CQS Q values

Q1	Q2	Q3	Q4	Q5	Q6	Q7	Q8	Q9	Q10	Q11	Q12	Q13	Q14	Q15
84.2	98.6	89.4	95.6	98.1	95.1	84.1	79.5	81.4	98.3	89.3	86.0	89.4	80.6	77.4

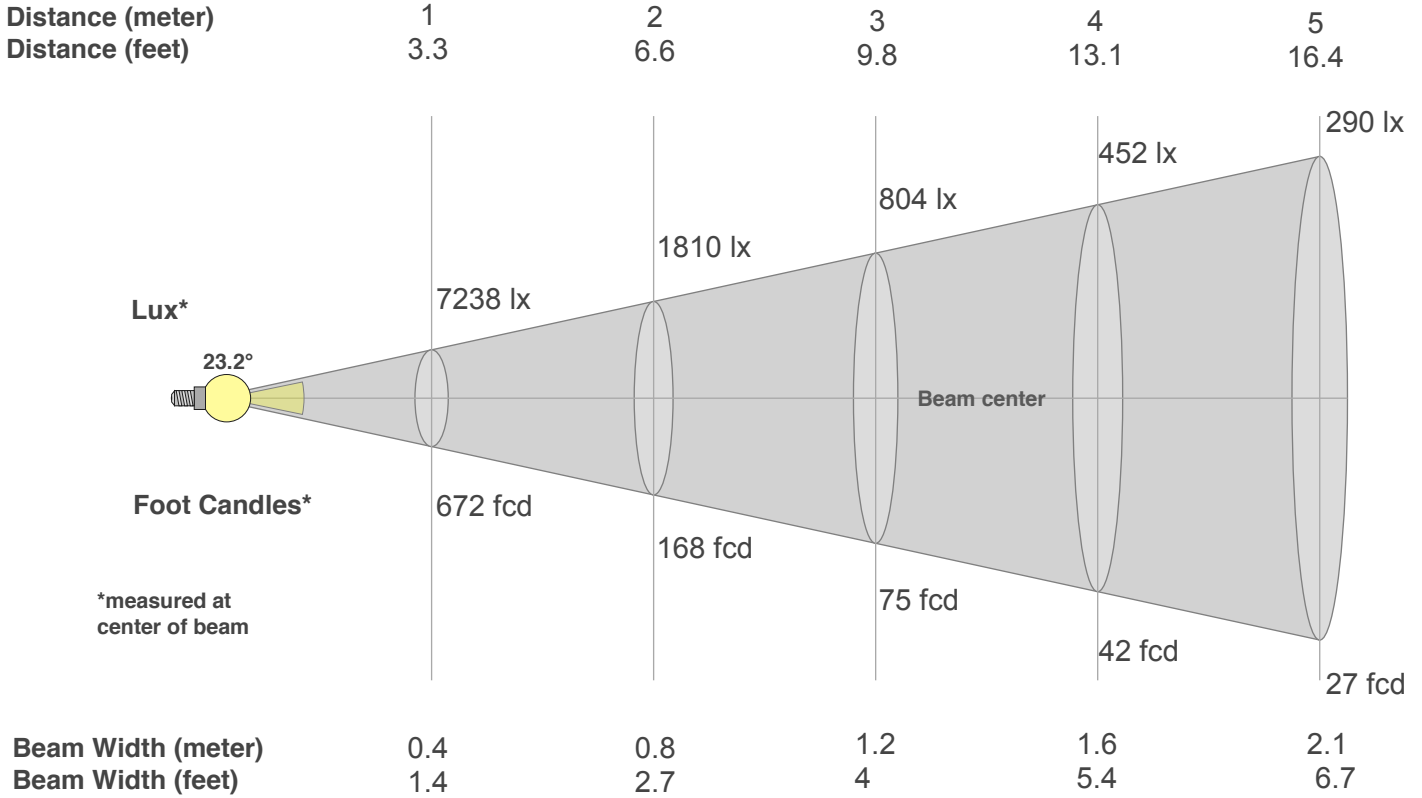
CQS: 86.5



Color Parameters

Color Temperature	Color Rendering Index	Red Component	Color Fidelity	Color Gamut	Color Quality Scale	Color Coordinate CIE 1931	Color Coordinate CIE 1931	Color Coordinate	Color Coordinate	Color Deviation from Black Body
CCT	CRI	CRI R9	TM30 Rf	TM30 Rg	CQS	x	y	u	v	Δuv
10030 K	63.5	-61.5	75.4	113.3	86.5	0.296	0.259	0.215	0.282	-0.0300

Beam Details



Beam Intensities from 1-20m

m	1	2	3	4	5	6	7	8	9	10	11	12	13	14	15	16	17	18	19	20
ft	3.3	6.6	9.8	13.1	16.4	19.7	23	26.2	29.5	32.8	36.1	39.4	42.7	45.9	49.2	52.5	55.8	59.1	62.3	65.6
lx	7238	1810	804	452	290	201	148	113	89	72	60	50	43	37	32	28	25	22	20	18
fcd	672.5	168.1	74.7	42	26.9	18.7	13.7	10.5	8.3	6.7	5.6	4.7	4	3.4	3	2.6	2.3	2.1	1.9	1.7

Intensities in 0° C-plane

0°	2°	4°	6°	8°	10°	12°	14°	16°	18°	20°	22°	24°	26°	28°	30°	32°	34°	36°	38°
7238	7173	6767	6063	5159	4287	3470	2664	1968	1425	1010	686	449	291	186	115	69	46	29	19
100%	99%	93%	84%	71%	59%	48%	37%	27%	20%	14%	9%	6%	4%	3%	2%	1%	1%	0%	0%

Intensities in 90° C-plane

0°	2°	4°	6°	8°	10°	12°	14°	16°	18°	20°	22°	24°	26°	28°	30°	32°	34°	36°	38°
7238	7173	6767	6063	5159	4287	3470	2664	1968	1425	1010	686	449	291	186	115	69	46	29	19
100%	99%	93%	84%	71%	59%	48%	37%	27%	20%	14%	9%	6%	4%	3%	2%	1%	1%	0%	0%

Intensities in 180° C-plane

0°	2°	4°	6°	8°	10°	12°	14°	16°	18°	20°	22°	24°	26°	28°	30°	32°	34°	36°	38°
7238	7003	6447	5751	5081	4327	3462	2642	1949	1416	1021	714	485	315	191	112	66	40	28	16
100%	97%	89%	79%	70%	60%	48%	36%	27%	20%	14%	10%	7%	4%	3%	2%	1%	1%	0%	0%

Intensities in 270° C-plane

0°	2°	4°	6°	8°	10°	12°	14°	16°	18°	20°	22°	24°	26°	28°	30°	32°	34°	36°	38°
7238	7003	6447	5751	5081	4327	3462	2642	1949	1416	1021	714	485	315	191	112	66	40	28	16
100%	97%	89%	79%	70%	60%	48%	36%	27%	20%	14%	10%	7%	4%	3%	2%	1%	1%	0%	0%

Beam Angle 50%	Field Angle 10%	Cutoff Angle 2,5%	Intensity Ratio in 120° Cone	Intensity Ratio in 90° Cone
23.2°	43.6°	56.3°	100.0%	99.9%

WiFLY EXR HEX5



Light Efficiency:

4 Lumen/Watt

Dominant Wavelength:

622 nm

Output:

201 lm

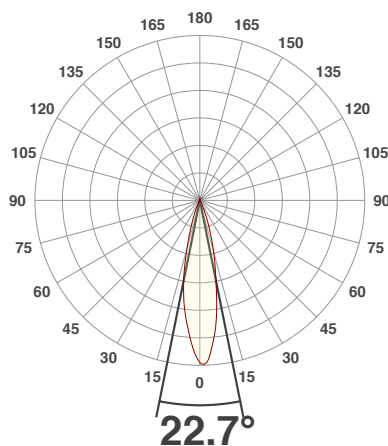
Power:

54.5 W

Peak:

1094 cd

Beam Angle



Test:

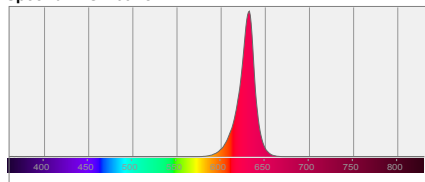
Red

Date:

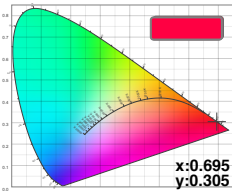
10/18/2018

Note:

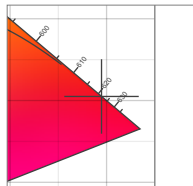
Spectral Distribution



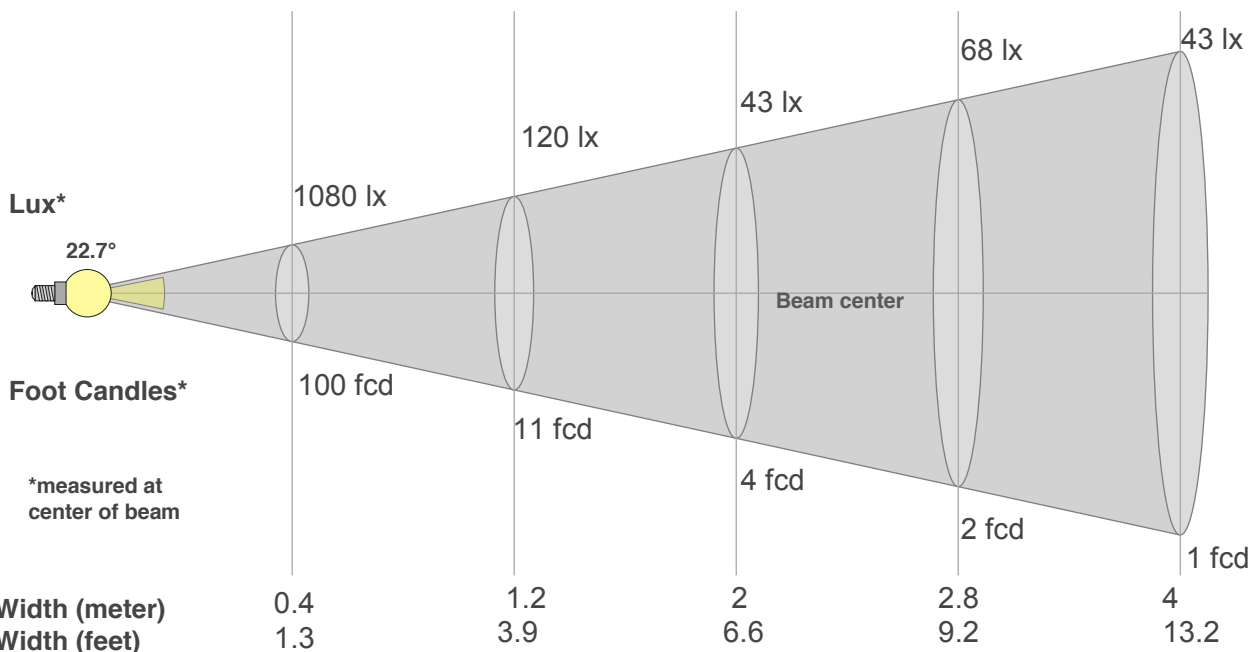
Color Coordinates



Zoom Color Point



Distance (meter)	1	3	5	7	10
Distance (feet)	3.3	9.8	16.4	22.9	32.8



*measured at center of beam

Beam Angle 50%	Field Angle 10%	Cutoff Angle 2,5%	Intensity Ratio in 120° Cone	Intensity Ratio in 90° Cone
22.7°	42.8°	54.3°	100.0%	100.0%

Beam Intensities from 1-20m

m	1	2	3	4	5	6	7	8	9	10	11	12	13	14	15	16	17	18	19	20
ft	3.3	6.6	9.8	13.1	16.4	19.7	23	26.2	29.5	32.8	36.1	39.4	42.7	45.9	49.2	52.5	55.8	59.1	62.3	65.6
lx	1080	270	120	68	43	30	22	17	13	11	9	8	6	6	5	4	4	3	3	3
fcd	100.4	25.1	11.2	6.3	4	2.8	2	1.6	1.2	1	0.8	0.7	0.6	0.5	0.4	0.4	0.3	0.3	0.3	0.3

WiFLY EXR HEX5



Light Efficiency:

8 Lumen/Watt

Dominant Wavelength:

526 nm

Output:

418 lm

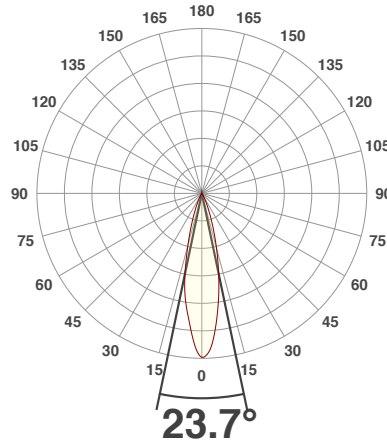
Power:

54.7 W

Peak:

2070 cd

Beam Angle



Test:

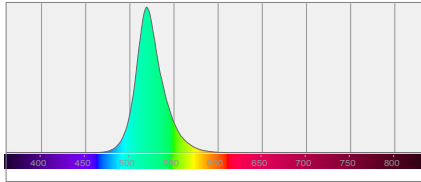
Green

Date:

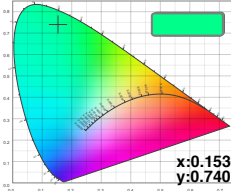
10/18/2018

Note:

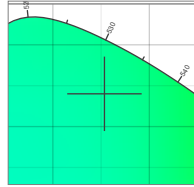
Spectral Distribution



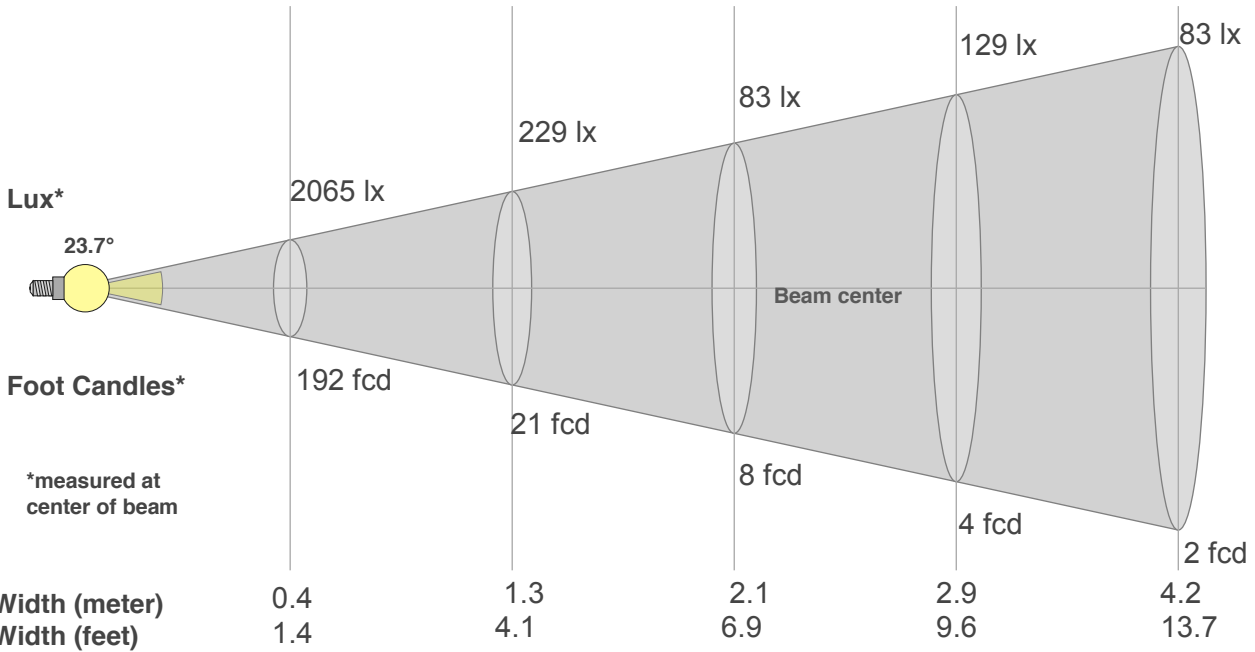
Color Coordinates



Zoom Color Point



Distance (meter)	1	3	5	7	10
Distance (feet)	3.3	9.8	16.4	22.9	32.8



*measured at center of beam

Beam Angle 50%	Field Angle 10%	Cutoff Angle 2,5%	Intensity Ratio in 120° Cone	Intensity Ratio in 90° Cone
23.7°	45°	58.3°	100.0%	99.8%

Beam Intensities from 1-20m

m	1	2	3	4	5	6	7	8	9	10	11	12	13	14	15	16	17	18	19	20
ft	3.3	6.6	9.8	13.1	16.4	19.7	23	26.2	29.5	32.8	36.1	39.4	42.7	45.9	49.2	52.5	55.8	59.1	62.3	65.6
lx	2065	516	229	129	83	57	42	32	25	21	17	14	12	11	9	8	7	6	6	5
fcd	191.8	48	21.3	12	7.7	5.3	3.9	3	2.4	1.9	1.6	1.3	1.1	1	0.9	0.7	0.7	0.6	0.5	0.5

WiFLY EXR HEX5



Light Efficiency:

2 Lumen/Watt

Dominant Wavelength:

463 nm

Output:

90.5 lm

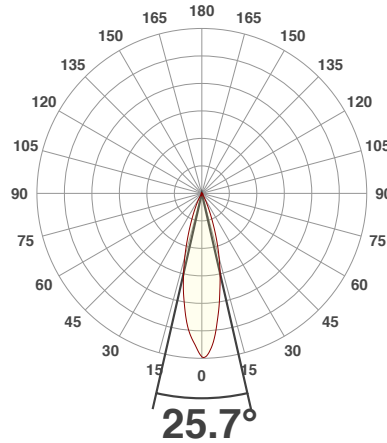
Power:

55.5 W

Peak:

383 cd

Beam Angle



Test:

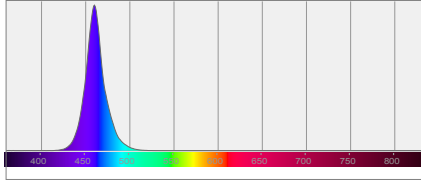
Blue

Date:

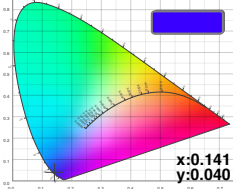
10/18/2018

Note:

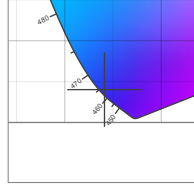
Spectral Distribution



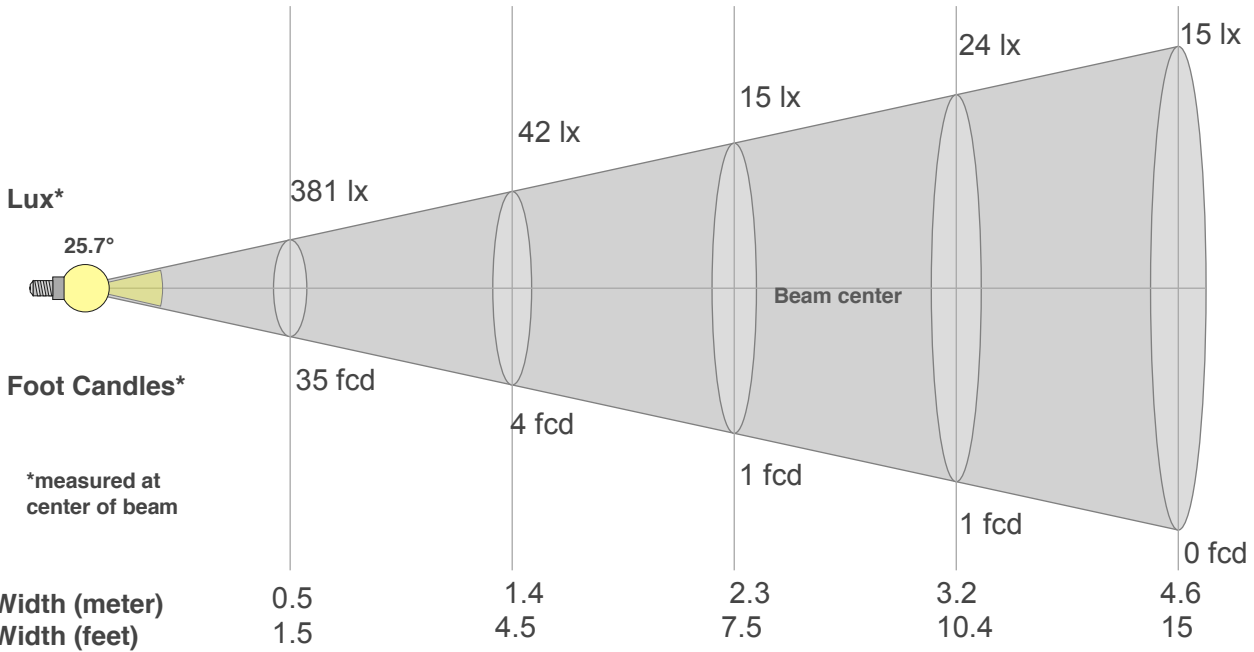
Color Coordinates



Zoom Color Point



Distance (meter)	1	3	5	7	10
Distance (feet)	3.3	9.8	16.4	22.9	32.8



*measured at center of beam

Beam Angle 50%	Field Angle 10%	Cutoff Angle 2,5%	Intensity Ratio in 120° Cone	Intensity Ratio in 90° Cone
25.7°	48.2°	61.6°	99.9%	99.2%

Beam Intensities from 1-20m

m	1	2	3	4	5	6	7	8	9	10	11	12	13	14	15	16	17	18	19	20
ft	3.3	6.6	9.8	13.1	16.4	19.7	23	26.2	29.5	32.8	36.1	39.4	42.7	45.9	49.2	52.5	55.8	59.1	62.3	65.6
lx	381	95	42	24	15	11	8	6	5	4	3	3	2	2	2	1	1	1	1	1
fcd	35.4	8.8	3.9	2.2	1.4	1	0.7	0.6	0.4	0.4	0.3	0.2	0.2	0.2	0.2	0.1	0.1	0.1	0.1	0.1

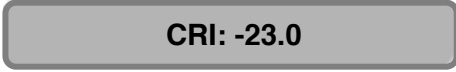
WiFLY EXR HEX5 IP



Light Efficiency:



Light Quality:



Color Temperature:



Output: 198 lm

Peak: 957 cd

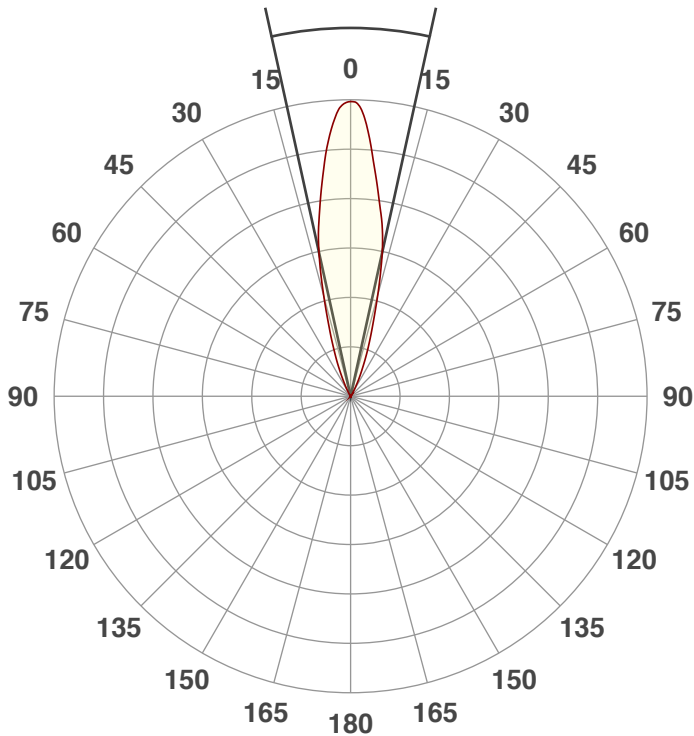
Power: 56.2 W

PF: 0.63



Beam Angle

24.8°



Test:

Amber

Date:

10/18/2018

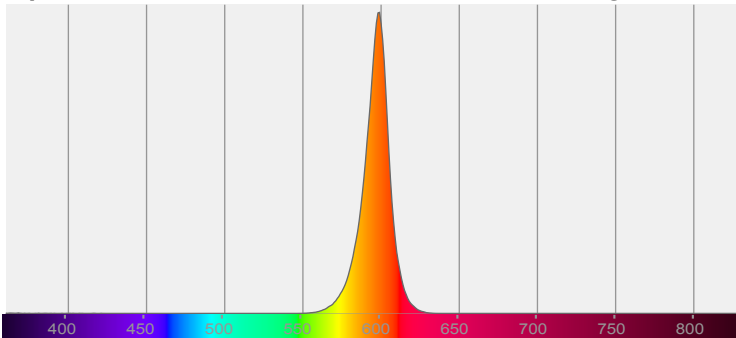
Note:



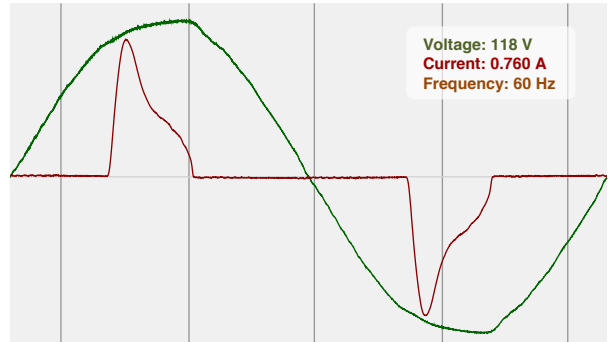
CIE 1931
x: 0.603
y: 0.397

Spectra

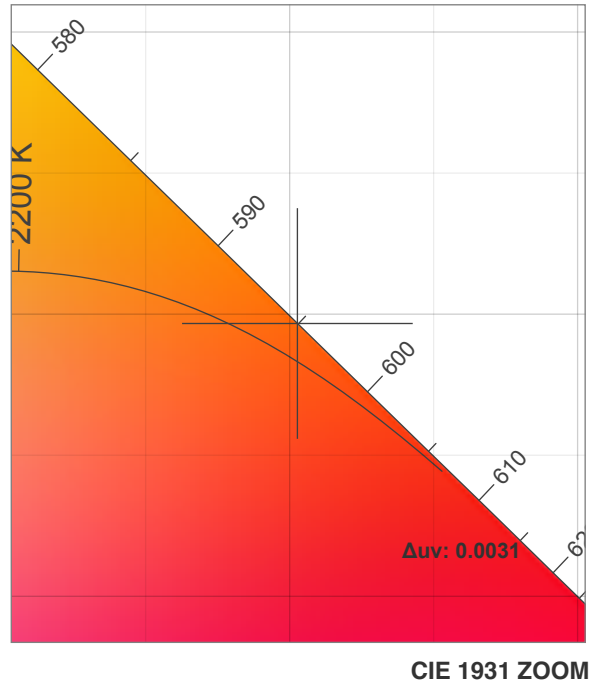
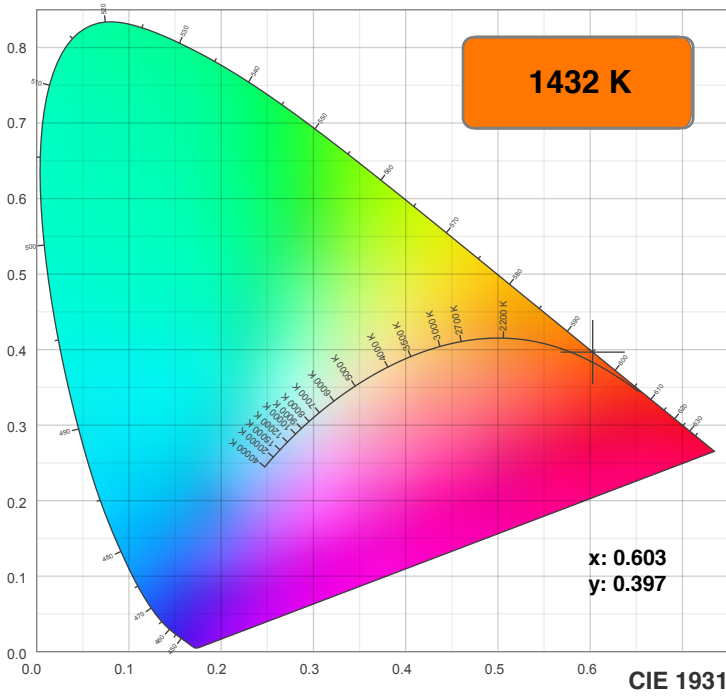
Dominant Wavelength: 595nm



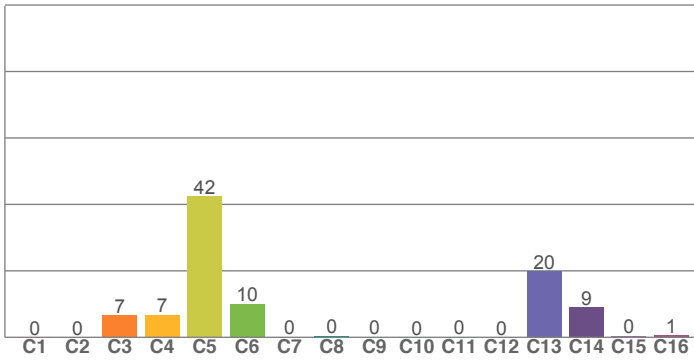
Power



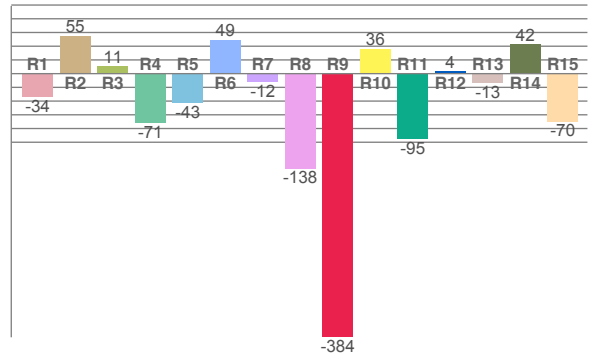
Color Details



TM30: 0.3



CRI: -23.0 (R1-R8)



CRI R values, only R1-R8 are used to calculate final CRI value

R1	R2	R3	R4	R5	R6	R7	R8	R9	R10	R11	R12	R13	R14	R15
-34.3	55.2	10.6	-71.4	-43.2	49.3	-12.2	-138.2	-384.4	36.3	-94.9	3.8	-13.3	42.3	-69.7

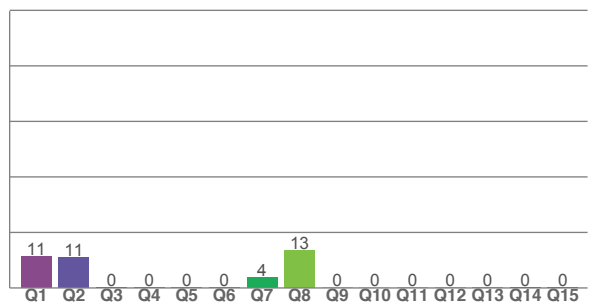
TM30 C values, 16 binned values out of total of 99 C values

C1	C2	C3	C4	C5	C6	C7	C8	C9	C10	C11	C12	C13	C14	C15	C16
0.0	0.0	6.6	6.8	42.3	10.1	0.0	0.4	0.1	0.0	0.0	0.0	19.9	9.1	0.5	0.6

CQS Q values

Q1	Q2	Q3	Q4	Q5	Q6	Q7	Q8	Q9	Q10	Q11	Q12	Q13	Q14	Q15
11.3	10.9	0.0	0.0	0.0	0.2	3.7	13.5	0.1	0.0	0.0	0.0	0.0	0.0	0.0

CQS: 0.0



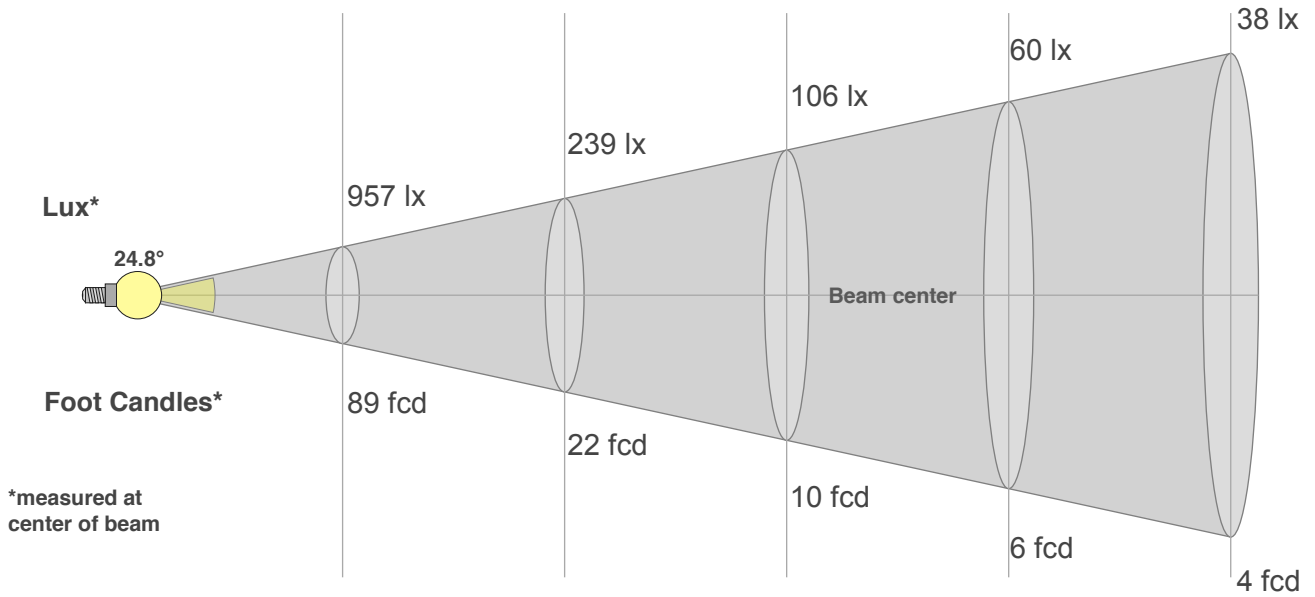
Color Parameters

Color Temperature	Color Rendering Index	Red Component	Color Fidelity	Color Gamut	Color Quality Scale	Color Coordinate CIE 1931	Color Coordinate CIE 1931	Color Coordinate	Color Coordinate	Color Deviation from Black Body
CCT	CRI	CRI R9	TM30 Rf	TM30 Rg	CQS	x	y	u	v	Δuv
1432 K	-23.0	-384.4	0.3	0.6	0.0	0.603	0.397	0.368	0.363	0.0031

Beam Details

Distance (meter)
Distance (feet)

1 2 3 4 5
3.3 6.6 9.8 13.1 16.4



Beam Width (meter)
Beam Width (feet)

0.4 0.9 1.3 1.8 2.2
1.5 2.9 4.3 5.8 7.2

Beam Intensities from 1-20m

m	1	2	3	4	5	6	7	8	9	10	11	12	13	14	15	16	17	18	19	20
ft	3.3	6.6	9.8	13.1	16.4	19.7	23	26.2	29.5	32.8	36.1	39.4	42.7	45.9	49.2	52.5	55.8	59.1	62.3	65.6
lx	957	239	106	60	38	27	20	15	12	10	8	7	6	5	4	4	3	3	3	2
fcd	88.9	22.2	9.9	5.6	3.6	2.5	1.8	1.4	1.1	0.9	0.7	0.6	0.5	0.5	0.4	0.3	0.3	0.3	0.2	0.2

Intensities in 0° C-plane

0°	2°	4°	6°	8°	10°	12°	14°	16°	18°	20°	22°	24°	26°	28°	30°	32°	34°	36°	38°
957	939	875	784	681	589	500	391	288	211	152	108	71	44	26	16	10	6	5	3
100%	98%	91%	82%	71%	62%	52%	41%	30%	22%	16%	11%	7%	5%	3%	2%	1%	1%	0%	0%

Intensities in 90° C-plane

0°	2°	4°	6°	8°	10°	12°	14°	16°	18°	20°	22°	24°	26°	28°	30°	32°	34°	36°	38°
957	939	875	784	681	589	500	391	288	211	152	108	71	44	26	16	10	6	5	3
100%	98%	91%	82%	71%	62%	52%	41%	30%	22%	16%	11%	7%	5%	3%	2%	1%	1%	0%	0%

Intensities in 180° C-plane

0°	2°	4°	6°	8°	10°	12°	14°	16°	18°	20°	22°	24°	26°	28°	30°	32°	34°	36°	38°
957	936	850	745	655	581	497	393	293	219	164	118	82	55	34	20	11	7	5	3
100%	98%	89%	78%	69%	61%	52%	41%	31%	23%	17%	12%	9%	6%	4%	2%	1%	1%	0%	0%

Intensities in 270° C-plane

0°	2°	4°	6°	8°	10°	12°	14°	16°	18°	20°	22°	24°	26°	28°	30°	32°	34°	36°	38°
957	936	850	745	655	581	497	393	293	219	164	118	82	55	34	20	11	7	5	3
100%	98%	89%	78%	69%	61%	52%	41%	31%	23%	17%	12%	9%	6%	4%	2%	1%	1%	0%	0%

Beam Angle 50%	Field Angle 10%	Cutoff Angle 2,5%	Intensity Ratio in 120° Cone	Intensity Ratio in 90° Cone
24.8°	45.7°	57.7°	100.0%	99.9%

WiFLY EXR HEX5 IP



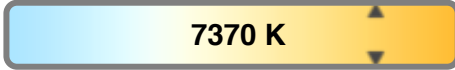
Light Efficiency:



Light Quality:



Color Temperature:



Output: 568 lm

Peak: 3248 cd

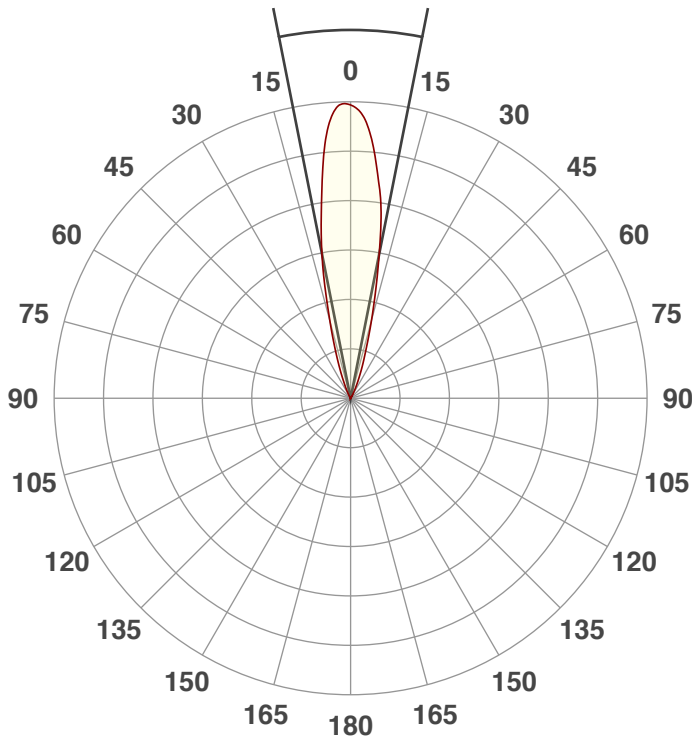
Power: 55.6 W

PF: 0.63



Beam Angle

22.4°



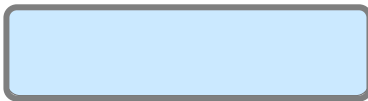
Test:

White

Date:

10/18/2018

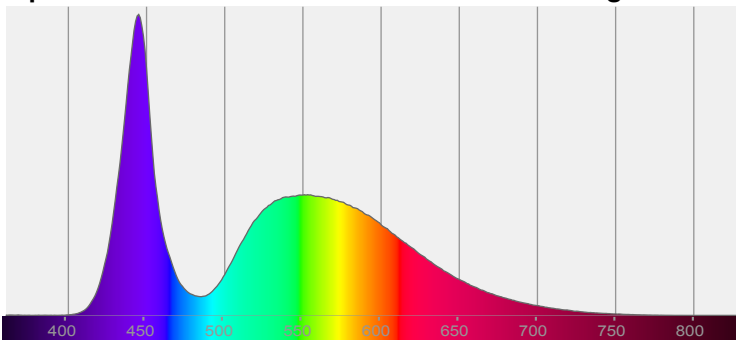
Note:



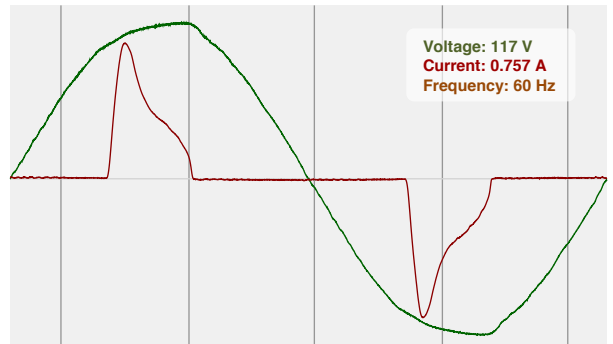
CIE 1931
x: 0.304
y: 0.305

Spectra

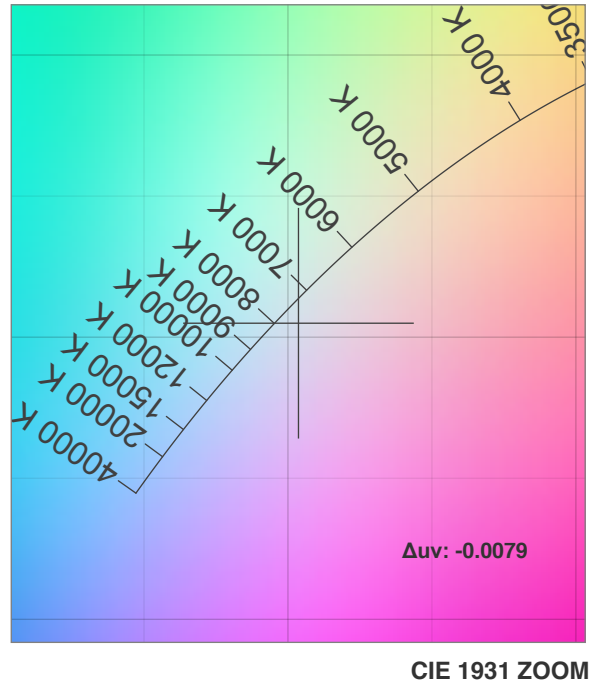
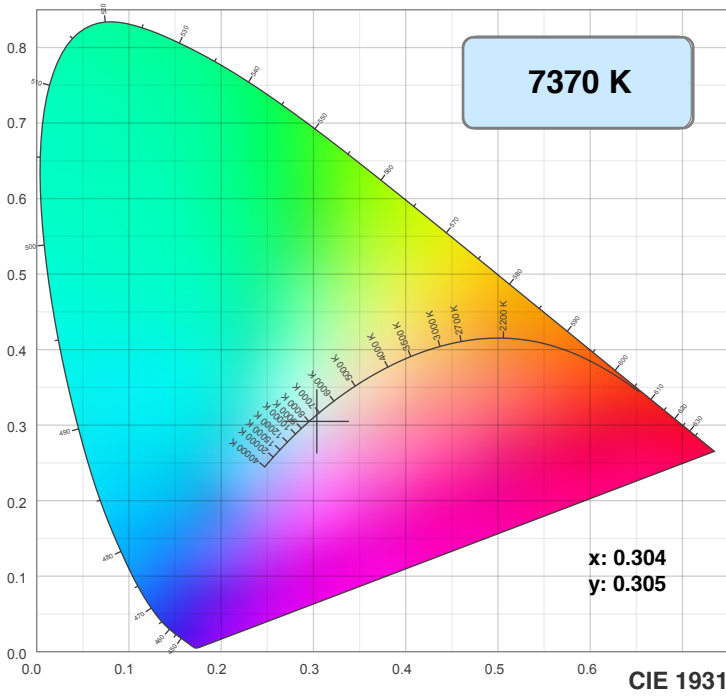
Dominant Wavelength: 360nm



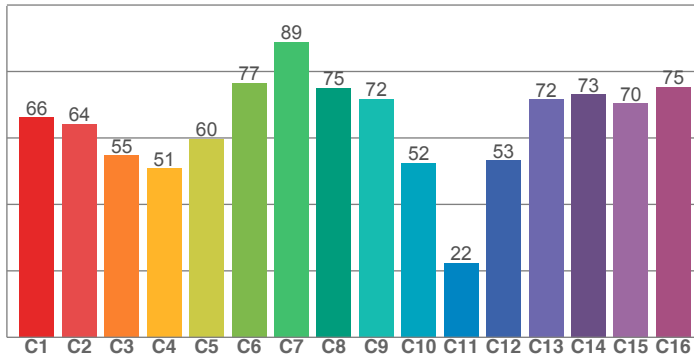
Power



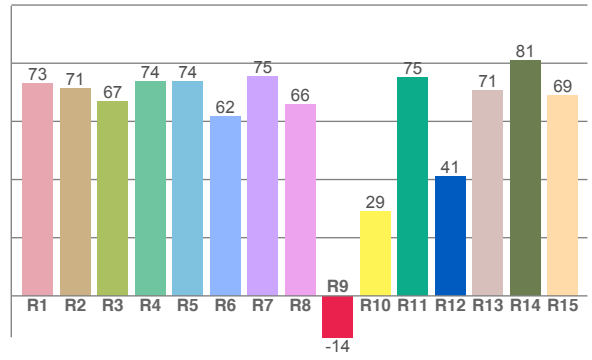
Color Details



TM30: 63.5



CRI: 70.2 (R1-R8)



CRI R values, only R1-R8 are used to calculate final CRI value

R1	R2	R3	R4	R5	R6	R7	R8	R9	R10	R11	R12	R13	R14	R15
72.9	71.5	66.7	73.8	73.7	61.8	75.4	65.9	-14.2	29.1	75.1	41.2	70.6	80.9	68.9

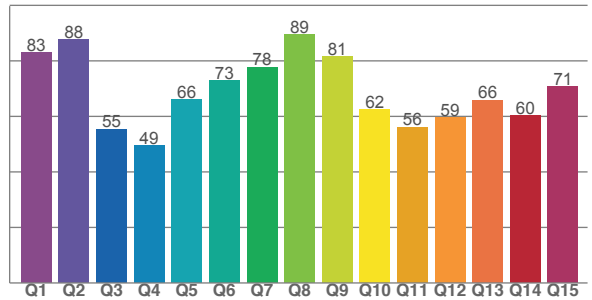
TM30 C values, 16 binned values out of total of 99 C values

C1	C2	C3	C4	C5	C6	C7	C8	C9	C10	C11	C12	C13	C14	C15	C16
66.2	64.3	54.7	50.9	59.7	76.5	88.9	75.1	71.8	52.4	22.3	53.2	71.5	73.2	70.3	75.4

CQS Q values

Q1	Q2	Q3	Q4	Q5	Q6	Q7	Q8	Q9	Q10	Q11	Q12	Q13	Q14	Q15
83.0	87.6	55.4	49.4	65.9	72.9	77.7	89.4	81.5	62.5	56.1	59.5	65.9	60.2	70.7

CQS: 66.9



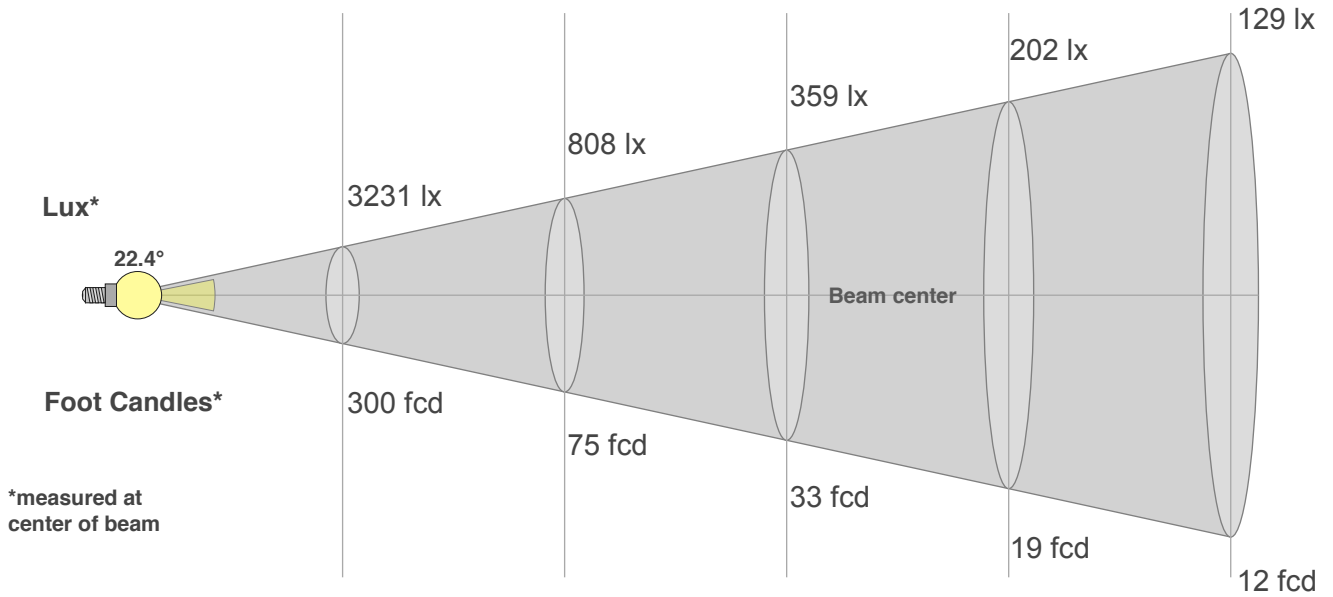
Color Parameters

Color Temperature	Color Rendering Index	Red Component	Color Fidelity	Color Gamut	Color Quality Scale	Color Coordinate CIE 1931	Color Coordinate CIE 1931	Color Coordinate	Color Coordinate	Color Deviation from Black Body
CCT	CRI	CRI R9	TM30 Rf	TM30 Rg	CQS	x	y	u	v	Δuv
7370 K	70.2	-14.2	63.5	96.4	66.9	0.304	0.305	0.201	0.302	-0.0079

Beam Details

Distance (meter)
Distance (feet)

1 2 3 4 5
3.3 6.6 9.8 13.1 16.4



Beam Width (meter)
Beam Width (feet)

0.4 0.8 1.2 1.6 2
1.3 2.6 3.9 5.2 6.5

Beam Intensities from 1-20m

m	1	2	3	4	5	6	7	8	9	10	11	12	13	14	15	16	17	18	19	20
ft	3.3	6.6	9.8	13.1	16.4	19.7	23	26.2	29.5	32.8	36.1	39.4	42.7	45.9	49.2	52.5	55.8	59.1	62.3	65.6
lx	3231	808	359	202	129	90	66	50	40	32	27	22	19	16	14	13	11	10	9	8
fcd	300.2	75	33.4	18.8	12	8.3	6.1	4.7	3.7	3	2.5	2.1	1.8	1.5	1.3	1.2	1	0.9	0.8	0.8

Intensities in 0° C-plane

0°	2°	4°	6°	8°	10°	12°	14°	16°	18°	20°	22°	24°	26°	28°	30°	32°	34°	36°	38°
3231	3234	3092	2763	2284	1867	1465	1055	744	514	349	226	146	94	58	34	22	15	9	5
100%	100%	96%	85%	71%	58%	45%	33%	23%	16%	11%	7%	5%	3%	2%	1%	1%	0%	0%	0%

Intensities in 90° C-plane

0°	2°	4°	6°	8°	10°	12°	14°	16°	18°	20°	22°	24°	26°	28°	30°	32°	34°	36°	38°
3231	3234	3092	2763	2284	1867	1465	1055	744	514	349	226	146	94	58	34	22	15	9	5
100%	100%	96%	85%	71%	58%	45%	33%	23%	16%	11%	7%	5%	3%	2%	1%	1%	0%	0%	0%

Intensities in 180° C-plane

0°	2°	4°	6°	8°	10°	12°	14°	16°	18°	20°	22°	24°	26°	28°	30°	32°	34°	36°	38°
3231	3152	2953	2639	2310	1917	1445	1053	749	525	378	260	174	110	65	38	22	15	9	5
100%	98%	91%	82%	71%	59%	45%	33%	23%	16%	12%	8%	5%	3%	2%	1%	1%	0%	0%	0%

Intensities in 270° C-plane

0°	2°	4°	6°	8°	10°	12°	14°	16°	18°	20°	22°	24°	26°	28°	30°	32°	34°	36°	38°
3231	3152	2953	2639	2310	1917	1445	1053	749	525	378	260	174	110	65	38	22	15	9	5
100%	98%	91%	82%	71%	59%	45%	33%	23%	16%	12%	8%	5%	3%	2%	1%	1%	0%	0%	0%

Beam Angle 50%	Field Angle 10%	Cutoff Angle 2,5%	Intensity Ratio in 120° Cone	Intensity Ratio in 90° Cone
22.4°	41.2°	53.8°	100.0%	100.0%

