

AMERICAN AUDIO®

VMS2™

Professional Digital Producer

FEATURING

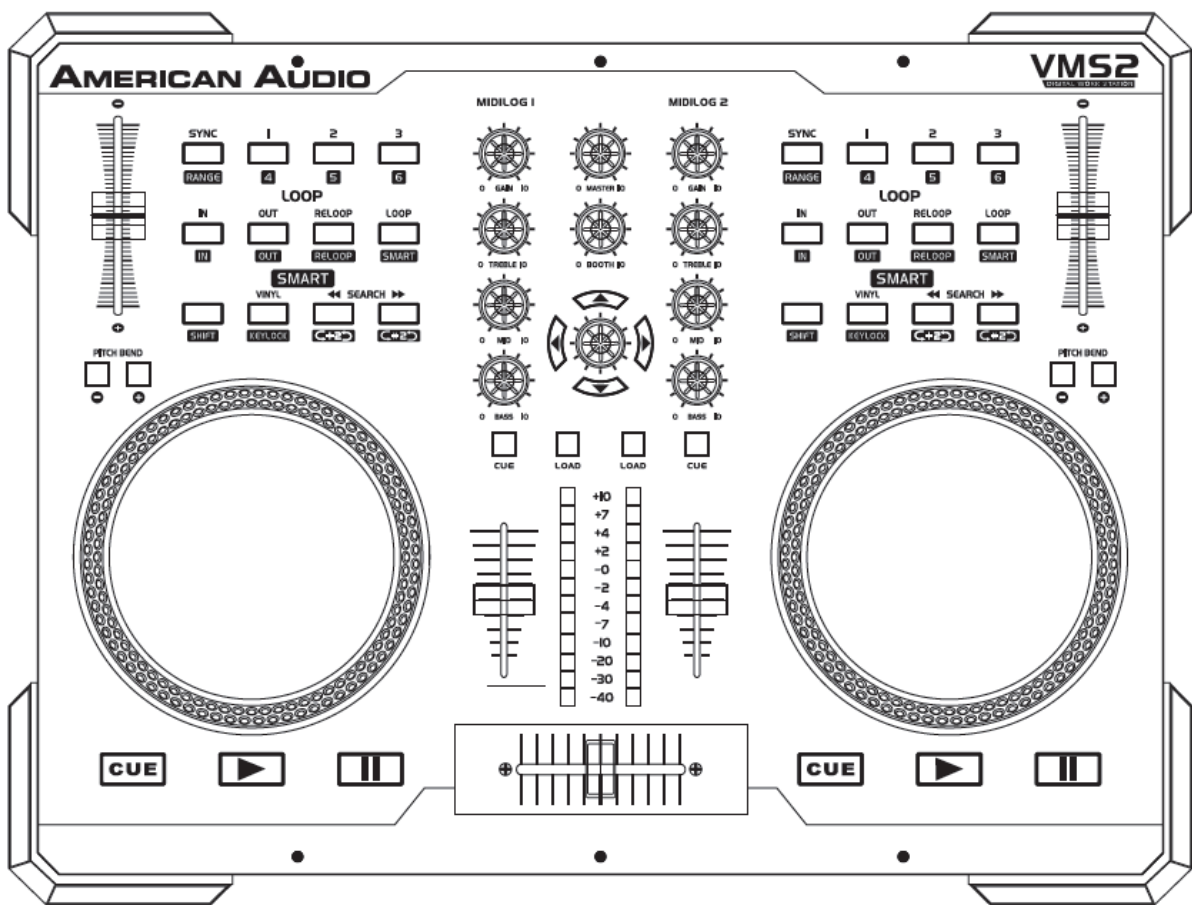
MIDI
COMPLIANT



seamless loop



User Guide and Reference Manual



Please visit one of the following websites to view and download the VMS2™ MIDI table chart:

- www.americanaudio.us
- www.americanaudio.eu

Please Note: All specifications and improvements to and in the design of this unit and this manual are subject to change at any time without any prior written or published noticed.

AMERICAN AUDIO®
6122 S. Eastern Ave
Los Angeles Ca. 90040
www.americanaudio.eu

1. TABLE OF CONTENTS

1. Table of Contents	4
2. Electrical Safety Precautions	6
3. Important Safety Precautions	8
4. Further Safety Instructions	11
5. Unpacking.....	13
6. Introduction	14
6.1 Customer Support	14
7. Set-Up Precautions	15
7.1 Operating Determinations	15
8. Main Features	16
9. Minimum System Requirements	17
9.1 PC Requirements	17
9.2 Mac Requirements	17
10. Set-Up.....	18
10.1 Checking the Contents	18
10.2 Installing the Units.....	18
10.3 Connections.....	18
11. Software and ASIO Driver Installation.....	19
12. General Functions and Controls.....	20
12.1 Player Front	20
12.2 Front Panel	24
12.3 Rear Panel.....	25
13. Audio Interface Mode	27
13.1 4 Out Mode	27
14. MIDI Latency Modes	28

15.	EQ Modes	29
16.	Firmware Update	30
17.	Computer Connection	32
17.1	Connecting the VMS2™ to your PC	32
18.	Setup.....	33
19.	Cleaning.....	34
20.	Crossfader Replacement	35
20.1	Replacing the Crossfader.....	35
21.	ROHS – A Contribution to the Conservation of Environment.....	36
22.	WEEE – Waste of Electrical and Electronic Equipment.....	37
23.	Specifications.....	38




2. ELECTRICAL SAFETY PRECAUTIONS



The lightning flash with an arrow triangular symbol is intended to alert the user to the presence of non-insulated “dangerous voltage” within the product’s enclosure, and may be of sufficient magnitude to constitute a risk of electric shock.





The exclamation point triangular symbol is intended to alert the user to the presence of important operating and maintenance (servicing) instructions in the user manual accompanying the unit.

	<p>CAUTION</p> <p>RISK OF ELECTRIC SHOCK! DO NOT OPEN!</p> <p>TO REDUCE THE RISK OF ELECTRIC SHOCK, DO NOT REMOVE THE COVER RACK. THERE ARE NO USER SERVICEABLE PARTS INSIDE. REFER SERVICE TO YOUR AUTHORIZED AMERICAN AUDIO® SERVICE DEALER.</p>	
 <p>Please carefully read and understand the instructions in this manual thoroughly before attempting to operate this unit. These instructions contain important safety information regarding the use and maintenance of this unit. Take special care to follow all warning symbols and labels both on the unit and printed in this manual. Also, Please keep this manual with the unit, for future reference.</p>		

CAUTION:

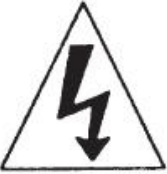

- Handle the power supply cord carefully. Do not damage or deform; it may cause electric shock or malfunction when used. Hold the plug attachment when removing from wall outlet. Do not pull on the cord.
- To avoid electric shock, do not open the top cover when the unit is plugged in. If problems occur with the unit, call your local American Audio® dealer.
- Do not place metal objects or spill liquid inside the unit. Electric shock or malfunction may occur.

	<p>CAUTION:</p> <p>TO PREVENT ELECTRIC SHOCK DO NOT USE THIS (POLARIZED) PLUG WITH AN EXTENSION CORD, RECEPTACLE OR OTHER OUTLET UNLESS THE BLADES CAN BE CAREFULLY INSERTED TO PREVENT BLADE EXPOSURE!</p>	
---	--	---

CAUTION:

- USE OF CONTROLS OR ADJUSTMENTS OTHER THAN THOSE SPECIFIED HEREIN MAY RESULT IN HAZARDOUS RADIATION EXPOSURE.
- THE DEVICE SHOULD NOT BE ADJUSTED OR REPAIRED BY ANYONE EXCEPT PROPERLY QUALIFIED SERVICE PERSONNEL.

<p>NOTE:</p> <p>This unit may cause interference to radio and television reception.</p>	<p>NOTE:</p> <p>This device uses a semiconductor laser. It is recommended for use in a room at the following temperature: 41° - 95°F or 5°C - 35°C.</p>
--	--

	<p>WARNING:</p> <p>TO PREVENT FIRE OR SHOCK HAZARD, DO NOT EXPOSE THIS DEVICE TO WATER OR MOISTURE!</p>	
---	--	---

3. IMPORTANT SAFETY PRECAUTIONS

Read Instructions – All the safety and operating instructions should be read before the product is operated.

Retain Instructions – The safety and operating instructions should be retained for future reference.

Heed Warnings – All warnings on the product and in the operating instructions should be adhered to.

Follow Instructions – All operating and use instructions should be followed.

Cleaning – The product should be cleaned only with a polishing cloth or a soft dry cloth. Never clean with furniture wax, benzene, insecticides or other volatile liquids since they may corrode the cabinet.

Attachments – Do not use attachments not recommended by the product manufacturer as they may cause hazards.

Water and Moisture – Do not use this product near water — for example, near a bathtub, wash bowl, kitchen sink, or laundry tub, in a wet basement or near a swimming pool and the like.

Accessories – Do not place this product on an unstable cart, stand, tripod, bracket, or table. The product may fall, causing serious injury to a child or adult and serious damage to the product. Use only with a cart, stand, tripod, bracket, or table recommended by the manufacturer, or sold with the product. Any mounting of the product should follow the manufacturer's instructions, and should use a mounting accessory recommended by the manufacturer.

Cart – A product and cart combination should be moved with care. Quick stops, excessive force, and uneven surfaces may cause the product and cart combination to overturn.



Ventilation – Slots and openings in the cabinet are provided for ventilation and to ensure reliable operation of the product and to protect it from overheating, and these openings must not be blocked or covered. The openings should never be blocked by placing the product on a bed, sofa, rug, or other similar surface. This product should not be placed in a built-in installation such as a bookcase or rack unless proper ventilation is provided or the manufacturer's instructions have been adhered to.

Power Sources – This product should be operated only from the type of power source indicated on the marking label. If you are not sure of the type of power supply to your home, consult your product dealer or local power company.

Location – The appliance should be installed in a stable location.

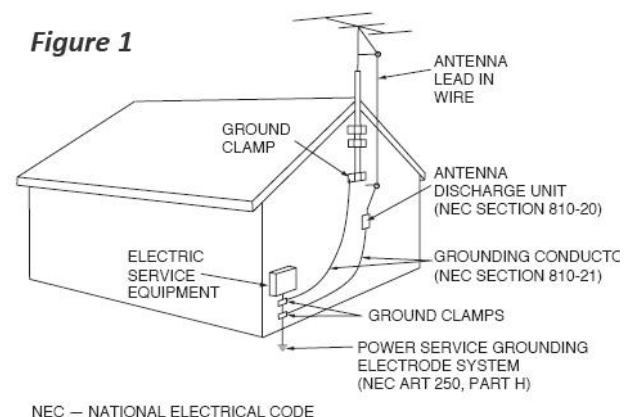
Nonuse Periods – The power cord of the appliance should be unplugged from the outlet when left unused for a long period of time.

Grounding or Polarization

- If this product is equipped with a polarized alternating current line plug (a plug having one blade wider than the other), it will fit into the outlet only one way. This is a safety feature. If you are unable to insert the plug fully into the outlet, try reversing the plug. If the plug should still fail to fit, contact your electrician to replace your obsolete outlet. Do not defeat the safety purpose of the polarized plug.
- If this product is equipped with a three-wire grounding type plug, a plug having a third (grounding) pin, it will only fit into a grounding type power outlet. This is a safety feature. If you are unable to insert the plug into the outlet, contact your electrician to replace your obsolete outlet. Do not defeat the safety purpose of the grounding type plug.

Outdoor Antenna Grounding – If an outside antenna or cable system is connected to the product, be sure the antenna or cable system is grounded so as to provide some protection against voltage surges and built-up static charges.

Article 810 of the National Electrical Code, ANSI/NFPA 70, provides information with regard to proper grounding of the mast and supporting structure, grounding of the lead-in



wire to an antenna discharge unit, size of grounding conductors, location of antenna-discharge unit, connection to grounding electrodes, and requirements for the grounding electrode. See **Figure 1**.

Power Cord Protection – Power-supply cords should be routed so that they are not likely to be walked on or pinched by items placed upon or against them, paying particular attention to cords at plugs, convenience receptacles, and the point where they exit from the product.

Lightning – For added protection for this product during a lightning storm, or when it is left unattended and unused for long periods of time, unplug it from the wall outlet and disconnect the antenna or cable system. This will prevent damage to the product due to lightning and power-line surges.

Power Lines – An outside antenna system should not be located in the vicinity of overhead power lines or other electric light or power circuits, or where it can fall into such power lines

or circuits. When installing an outside antenna system, extreme care should be taken to keep from touching such power lines or circuits as contact with them might be fatal.

Overloading – Do not overload wall outlets, extension cords, or integral convenience receptacles as this can result in a risk of fire or electric shock.

Object and Liquid Entry – Never push objects of any kind into this product through openings as they may touch dangerous voltage points or short-out parts that could result in a fire or electric shock. Never spill liquid of any kind on the product.

Servicing – Do not attempt to service this product yourself as opening or removing covers may expose you to dangerous voltage or other hazards. Refer all servicing to qualified service personnel.

Damage Requiring Service – Unplug this product from the wall outlet and refer servicing to qualified service personnel under the following conditions:

- When the power supply cord or plug is damaged.
- If liquid has been spilled, or objects have fallen into the product.
- If the product has been exposed to rain or water.
- If the product does not operate normally by following the operating instructions. Adjust only those controls that are covered by the operating instructions as an improper adjustment of other controls may result in damage and will often require extensive work by a qualified technician to restore the product to its normal operation.
- If the product has been dropped or damaged in any way.
- When the product exhibits a distinct change in performance - this indicates a need for service.

Replacement Parts – When replacement parts are required, be sure the service technician has used replacement parts specified by the manufacturer or have the same characteristics as the original part. Unauthorized substitutions may result in fire, electric shock, or other hazards.

Safety Check – Upon completion of any service or repairs to this product, ask the service technician to perform safety checks to determine that the product is in proper operating condition.

Wall or Ceiling Mounting – The product should not be mounted to a wall or ceiling.

Heat – The product should be situated away from heat sources such as radiators, heat registers, stoves, or other products (including amplifiers) that produce heat.

4. FURTHER SAFETY INSTRUCTIONS

Read Instructions – All the safety and operating instructions should be read before the unit is operated. The safety and operating instructions should be saved for future reference.

Heed Warnings – All warnings on the unit and in the operating instructions should be adhered to.

Water and Moisture – The device should not be used near water - for example, near a bath tub, kitchen sink, laundry tub, in a wet basement or near a swimming pool, etc.

Ventilation – The device should be situated so that its location or position does not interfere with its proper ventilation. For example, the device should not be situated on a bed, sofa, rug, or similar surface that may block the ventilation openings; or, placed in a built-in installation, such as a bookcase or cabinet that may impede the flow of air through the ventilation openings.

Heat – The device should be situated away from heat sources such as radiators, heat registers, stoves, or other appliances (including amplifiers) that produce heat.

Power Sources – The device should be connected to a power supply only of the type described in the operating instructions or as marked on the unit.

Servicing – The user should not attempt to service the device beyond that described in the operating instructions. All other servicing should be referred to qualified service personnel. The device should be serviced by qualified service personnel when:

- The power-supply cord or the plug has been damaged.
- Objects have fallen, or liquid has been spilled into the unit.
- The unit has been exposed to rain or water.
- The unit does not appear to operate normally or exhibits a marked change in performance.

The serial and model number for this unit is located on the rear panel. Please write down the numbers here and retain for future reference.

Model No. _____

Serial No. _____

Purchase Notes _____

Date of Purchase _____

Dealer Name _____

Dealer Address _____

Dealer Phone _____

5. UNPACKING

Every VMS2™ has been thoroughly tested and has been shipped in perfect operating condition.

Carefully check the shipping carton for damage that may have occurred during shipping.

If the carton appears to be damaged, carefully inspect your device for any damage and be sure all equipment necessary to operate the device has arrived intact.

In case damage has been found or parts are missing, please contact our toll free customer support number for further instructions.

Please do not return the device to your dealer.

6. INTRODUCTION

Congratulations and thank you for purchasing the American Audio® VMS2™ media controller. This device is a representation of American Audio's® continuing commitment to produce the best and highest quality audio products possible at an affordable price.

Please read and understand this manual completely before attempting to operate your new device. This booklet contains important information concerning the proper and safe operation of your new device.

6.1 CUSTOMER SUPPORT

American Audio® provides a toll free customer support line to provide set up help and to answer any questions, should you encounter problems during your initial set-up or operation. You may also visit us on the web at www.AmericanAudio.us for any comments or suggestions.

Service Hours are Monday through Friday 08:30 to 17:00 GMT+1.

- Voice: 0031 45 546 85 30
- Fax: 0031 45 546 85 99
- E-mail: service@adigroup.com

For spare parts please look in our online part shop.

Caution!

There are no user serviceable parts inside this device. Do not attempt any repairs by yourself. Doing so will void your manufactures warranty. In the unlikely event your device may require service, please contact American Audio® customer support.

Do not discard the packing carton in the trash. Please recycle whenever possible.

7. SET-UP PRECAUTIONS

Please be sure to make any connections before plugging the device in to an electrical outlet.

All fader and volume controls should be set to zero or minimum position, before the device is switched on.

If the device has been exposed to drastic temperature fluctuation (e.g. after transportation), do not switch on the device immediately. The arising condensation of water might damage your device. Leave the device switched off until it has reached room temperature.

7.1 OPERATING DETERMINATIONS

When installing this device, please make sure that it is not exposed to extreme heat, moisture or dust!

- Do not operate the mixer in extremely hot (more than 40°C / 104°F) or extremely cold (less than 5°C / 40°F) surroundings.
- Keep the unit out of direct sunlight and away from heaters.
- Operate the device only after becoming familiar with its functions. Do not permit operation by persons not qualified for operating the unit. Most damages are the result of unprofessional operation!

8. MAIN FEATURES

- 3 Cue Points Per Side
- MIDI Control via USB
- Built-In 4 In 4 Out
- Seamless Loop (uninterrupted loop playback)
- Full EQ on 2 MIDILOG Channels
- Crossfader Assign, Curve, & Reverse
- Pitch Lock
- Pitch Bend
- 82 MIDI Controls
- 2-Channel Mixer w/ Volume Faders
- Stereo Master and Booth Outputs
- Mic
- Master Volume Control
- Track & Deck Selectors
- Durable Touch Sensitive High-Res Jog Wheel
- One Mic Combo Jack
- Innofader Compatible
- USB/Analog Source Selects on Each MIDILOG™ Channel

9. MINIMUM SYSTEM REQUIREMENTS

Note: System Requirements may differ due to manufacturer software!

9.1 PC REQUIREMENTS

- Windows XP SP2 or Windows Vista (32-bit & 64-bit supported)
- PIV 1.2GHz Computer (SSE2 CPU), AMD 64 or Greater
- 1024_768 SVGA Video
- 2 GIG RAM (Vista)
- 40MB Free on the Hard-Drive (Recommended 2000MB)
- DirectX 9.0

9.2 MAC REQUIREMENTS

- Mac OS X 10.5 PPC/Intel, 10.5.6 Intel, or 10.6 Intel
- 1.86GHz
- 2GB RAM

10. SET-UP

10.1 CHECKING THE CONTENTS

Be sure your VMS2™ was shipped with the following:

- VMS2™ Controller
- Operating Instructions (This Booklet)
- USB Cable
- 6V Power Adapter
- Virtual DJ Software
- Warranty card

10.2 INSTALLING THE UNITS

- Place your unit on a flat surface or mount it in a secure rack mount case.
- Be sure the player is mounted in a well-ventilated area where it will not be exposed to direct sunlight, high temperatures, or high humidity.
- Try to place the unit as far as possible from TVs and tuners, as the unit may cause undesirable interference.

10.3 CONNECTIONS

Be sure main power is connected last to prevent any electrical damage.

AUDIO CONNECTIONS

Use RCA or XLR cables to connect the VMS2™ outputs to powered speakers or an amplifier. Never connect this player's output to a mixers Phono inputs.

Caution: To avoid severe damage to the unit, be sure the power is off when making connections to the unit.

11. SOFTWARE AND ASIO DRIVER INSTALLATION

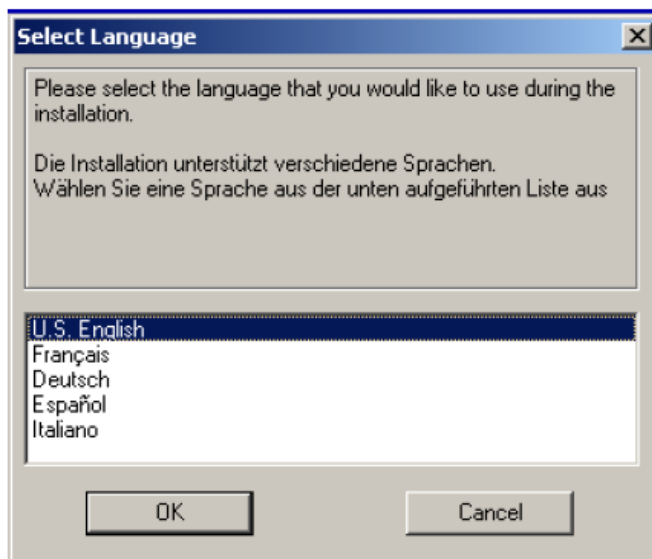
Insert the disc into your computer cd drive and click on the CD icon.

Depending on the type of computer you are operating, choose the *.exe file for PC or the *.dmg file for MAC.

Choose your desired language and click OK.

Read the following information and click Next.

Follow the screen prompts to install the software.



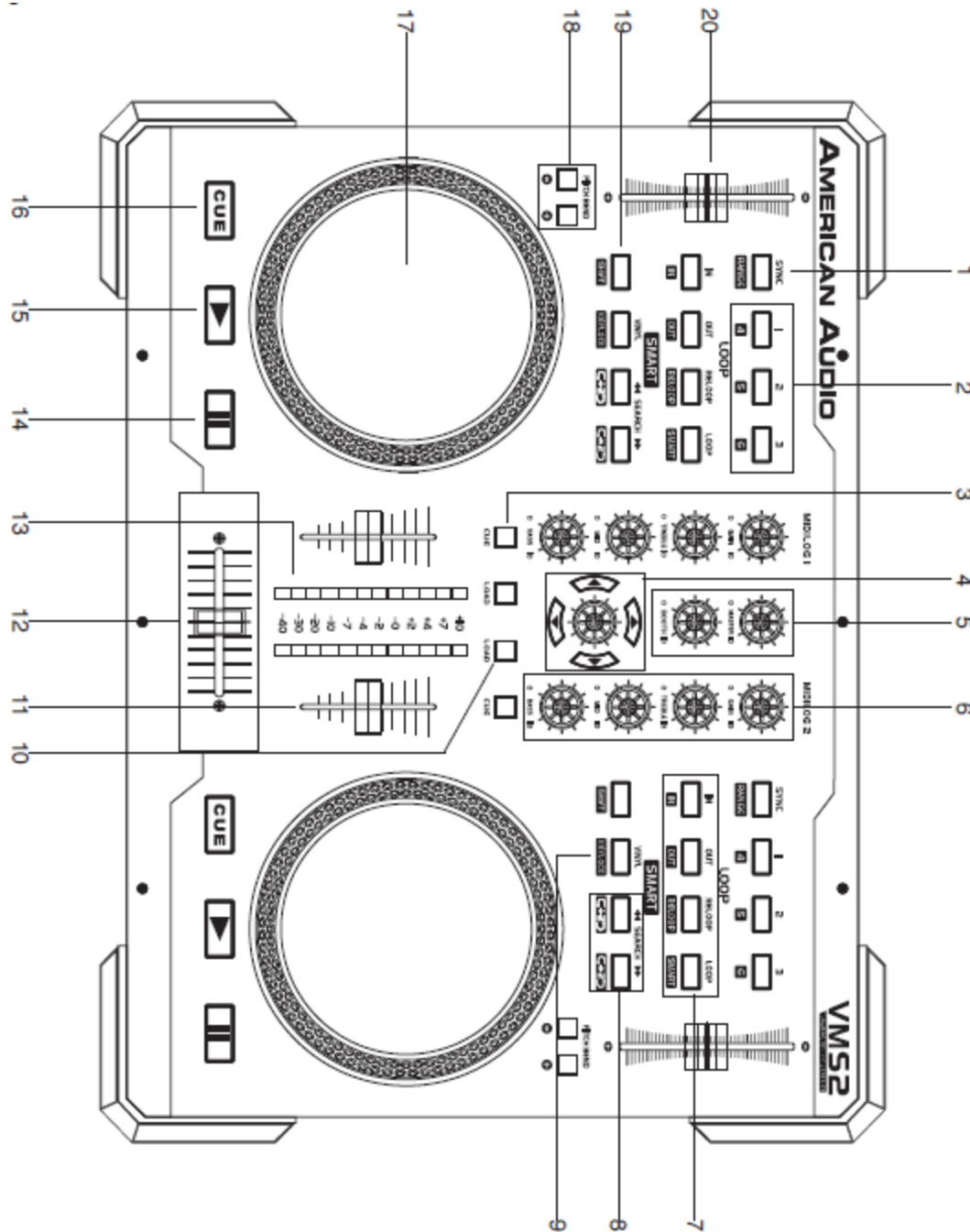
The ASIO Driver installation will open during the Virtual DJ installation.

- PC users, follow the screen prompts for proper installation.
- Mac install is automatic after clicking on the *.dmg file.



12. GENERAL FUNCTIONS AND CONTROLS

12.1 PLAYER FRONT



(1) Sync Button – Use this button to set this deck to master and auto sync the other deck's tempo to the master.

(2) Bank Buttons – These buttons are used to store 3 cue points.

(3) Cue Button – These buttons are used to activate a channels' *Cue* mode. The *Cue* LED will glow when a channels' *Cue* mode is activated. The *Cue* function sends a channels' incoming signal to the headphones. The cue level is adjusted by the *Cue Level Knob*.

Note: The MIDILOG Cue button has an additional function. During power-on, hold this button down to toggle the Post EQ Mode on and off. For more on this, please refer to the Virtual DJ Setup described in chapter 11 (Software and ASIO Driver Installation).

(4) Navigation Buttons – These buttons allow easy navigation of your music library on your software.

(5) Master Volume and Booth Controls

- **Master Volume Control** – This knob is used to control the master output level. To avoid distorted output, try to maintain an average output signal level no greater than +4dB. To avoid speaker damage that may be caused by excessive volume, be sure this knob is always set to zero (completely down) before turning the unit on.
- **Booth Level** – This knob is used to adjust the monitor volume output level. Turn the knob in a clockwise direction to increase the monitor volume.

(6) MIDILOG Mixer Section

Channel Gain Control – This adjustment is used to adjust the audio source signal input gain for a channel. Never use the gain control to adjust a channels output volume. Setting the gain level properly will ensure a clean output signal. An improper gain level adjustment will send a distorted signal throughout the entire audio line which may damage speakers and amplifiers. To properly set a channels gain level control:

1. Be sure the *Master Volume Control* is set to level 4.
2. Set the *Channel Fader* to level 8.
3. Begin playback on an audio source connected to the channel you are adjusting.
4. Use the *Gain Control* to adjust an average output volume of +4 dB.
5. Repeat this step for all channels

Channel Treble Control – This knob is used to adjust the treble levels of a channel allowing for a maximum treble gain of +6dB or maximum decrease of -100dB. Turning the knob in a counter-clockwise direction will decrease the amount of treble applied to a channel signal, turning the knob in a clockwise direction will increase the amount of treble applied to a channel signal.

Channel Midrange Control – This knob is used to adjust the midrange levels of a channel allowing for a maximum midrange gain of +6dB or maximum decrease of -100dB. Turning the knob in a counter-clockwise direction will decrease the amount of midrange applied to a channel signal, turning the knob in a clockwise direction will increase the amount of midrange applied to a channel signal.

Channel Bass Control – This knob is used to adjust the low frequency levels of a channel allowing for a maximum bass gain of +6dB or maximum signal decrease of -100dB. Turning the knob in a counter-clockwise direction will decrease the amount of bass applied to a channel signal, turning the knob in a clockwise direction will increase the amount of bass applied to a channel signal.

(7) IN, OUT, Reloop, & Loop Buttons

- **IN Button** – “Cue On The Fly” - This function allows you to set a *Cue Point* without music interruption (“on the fly”). This button also sets the starting point of a seamless loop.
- **OUT Button** – This button is used to set the ending point of a loop. A loop is started by pressing the *IN Button*, pressing the *OUT Button* sets the loop ending point. The loop will continue to play until the *Out Button* is pressed once again.
- **Reloop Button** – If a seamless loop has been made, but the player is not actively in seamless loop mode (a loop is not playing), pressing the *Reloop Button* will instantly reactivate the seamless loop mode. To exit loop, press the *Out Button*.

(8) Search Buttons



This search button allows you to quickly scan backwards through a track.



This search button allows you to quickly scan forwards through a track.

(9) Vinyl – Pushing this button activates *Vinyl* mode.

(10) Load Buttons – These buttons are used to load the selected song to the assigned deck in the software.

(11) Channel Fader – These faders are used to control the output signal of any source assigned to its particular channel.

(12) Crossfader – This fader is used to blend the output signals of channels A and B together. When the fader is in the full left position (channel A), the output signal of channel A will be controlled by the master volume level. The same fundamentals will apply for channel B. Sliding the fader from one position to another will vary the output signals of channels A and B respectively. When the crossfader is set in the center position, the output signals of both the channels A and channels B will be even.

(13) Channel Volume Level Indicators – The LED indicators that run along each channels EQ section are used to measure incoming signal levels. Use these indicators to visually maintain an average signal output of +4dB. A consistent average output level of +4dB will produce a clean output signal. When no *Cue* sources are selected, these indicate the volume level on the *Master Output*. When one or more *Cue* sources are selected, these indicate the volume levels on all of the *Cue* sources combined. At power-on, these indicate the VMS2™ firmware

version. If the left side lights up 1 LED, and the right side lights up 3 LEDs, the firmware version is 1.3.

(14) Pause Button – Press this button to pause whatever music source is playing.

(15) Play Button – Press this button to play your desired music source.

(16) CUE – Pressing the *CUE* button during playback immediately pauses playback and returns the track to the last set cue point. The red *CUE* LED will glow when the unit is in cue mode. The LED will also flash every time a new Cue Point is set. The *CUE* button can be held down to momentarily play the track. When you release the *CUE* button, it instantly returns to the Cue Point. You can also tap the *CUE* button to create a „Bop Effect“.

(17) Jog Wheel – This wheel has three functions:

Attention: *Make sure that nothing is touching or resting on the jog wheels when you power on the VMS2™.*

- The wheel works as a pitch bend during playback. Turning the wheel clockwise can increase the pitch percentage up to 100%, and turning the wheel in the counter-clockwise direction can decrease the pitch percentage down to -100%. The pitch bend will be determined on how long you turn the jog wheel continuously.
- The jog wheel also controls the scratch effect, when the scratch effect is active.
- The jog wheel can also serve as frame search.

Note: *The inside of the wheel is touch sensitive and the outside edge of the wheel is not.*

Example: *You can scratch by touching the inside or center of the wheel, and pitch bend when you touch the outside edge of the wheel.*

(18) Pitch Bend Buttons

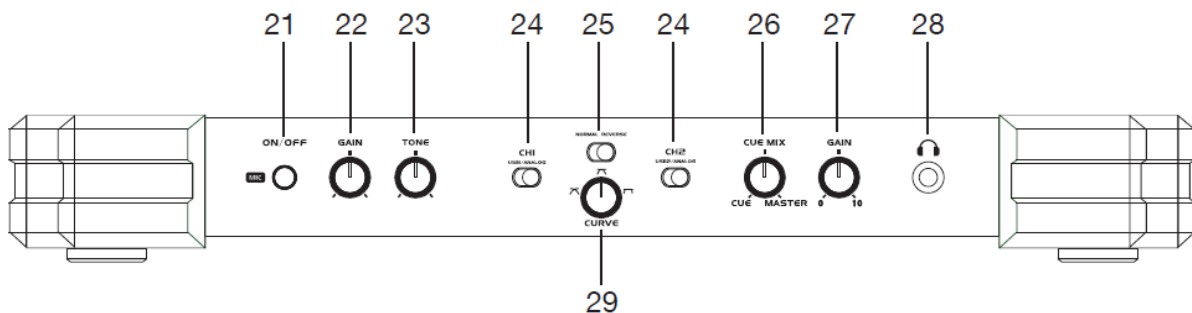
(-) Pitch Bend Button – The (-) pitch bend function creates a momentary “Slow Down” in the BPM’s (Beats per minute) while it is playing. This will allow you to match the beats between two playing audio sources. Remember, this is a momentary function. When you remove your finger from the pitch button, the BPM’s will automatically return to the Pitch slider’s pitch value. Holding down this button will give a maximum of -100% pitch. Use this function to slow to another playing music source. Be sure to notice that this function is a momentary pitch adjustment, for a more precise adjustment use the *Pitch Slider (20)* to match the BPM’s with another playing music source.

(+) Pitch Bend Button – The (+) pitch bend function creates a momentary “Bump” in the BPM’s (Beats per minute) while it is playing. This will allow you to match the beats between two playing audio sources. Remember, this is a momentary function. When you remove your finger from this button, the BPM’s will automatically return to the Pitch slider’s selected pitch. Holding down this button will give a maximum of +100% pitch.

(19) Shift – Enables secondary MIDI commands on buttons and jog wheels. *Example: Press Shift and Vinyl to activate Keylock.*

(20) Pitch Slider – This slider is used to adjust the playback pitch percentage. The slider is a set adjustment and will remain set until the pitch slider is moved or the pitch function has been turned off.

12.2 FRONT PANEL



MIC SECTION (21-23)

The VMS2™ is equipped with a microphone input, easy to use, no ASIO routing required. The microphone channel has an independent *On/Off* switch, *Gain* control, and *Tone* control.

(21) Mic On/Off – Turns the microphone on and off. When your microphone is on, the button will be backlit by a red LED.

(22) Mic Gain Control – Increase or decrease the microphone signal level.

(23) Mic Tone – Adjust the vocal tone on the microphone input.

MIXER CONTROLS (24-25)

The VMS2™ can be used as a MIDI control, a standalone mixer, or in combination giving you maximum control of your music collection whether it be on vinyl, digital CD's or Computer DJ software (Virtual DJ included).

(24) USB/Analog Switch – These will switch the corresponding channel from USB audio stream or analog audio input. *USB* will route the software assigned ASIO audio channel thru the corresponding MIDILOG channel. *Analog* will route the analog audio input from the rear panel thru the corresponding MIDILOG channel.

(25) Normal/Reverse (Crossfader Mode) – Switches the crossfader from normal to reverse mode. In reverse mode the CF A assignments will be on the right of the crossfader and the CF B on the left.

(26) Cue/Master Knob – Sets the headphones output from *Cue* or *Master*. When set to the *Cue* position, the headphones will receive the signal from any and all channels with the *Cue* button activated. When set to the *Master* position, the headphones will receive the pre

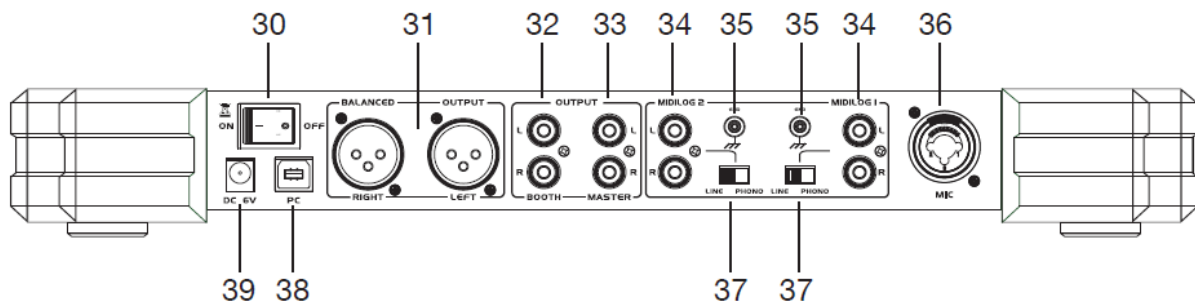
fader master output signal, allowing you to cue the master at any output level and even if it is fully off. Any knob settings in between *Cue* and *Master* will blend the *Cue* and *Master* signals.

(27) Headphones Gain – Will set the output level of the headphones.

(28) Headphones Jack – Connect your headphones to this jack. The headphones signal is controlled by the controls described previously.

(29) Curve Knob – This knob will adjust the curve of the crossfader from mix curve, dipped curve, to scratch curve.

12.3 REAR PANEL



(30) Power Switch – This switch will turn the VMS2™ on and off. When the unit is powered on, the power indicator LED will glow. **Attention:** Make sure that nothing is touching or resting on the jog wheels when you power on the VMS2™.

(31) XLR Balanced Outputs – The VMS2™ has RCA (unbalanced) and XLR (balanced) connections to connect to amplifiers or connect directly to powered speakers. It is highly recommended that the XLR outputs are used for any connection of more than 20ft. Never connect the XLR outputs and the RCA master outputs at the same time; this may affect your output. To set your desired volume, use the *Master Volume (5)* knob.

(32) Booth Outputs – The VMS2™ offers a secondary output usually used to monitor your mix or to route to an outboard recording device. This output has an independent volume control, the *Booth (5)* knob.

(33) RCA Outputs – The VMS2™ has RCA (unbalanced) and XLR (balanced) connections to connect to amplifiers or connect directly to powered speakers. It is highly recommended that the XLR outputs are used for any connection of more than 20ft. Never connect the XLR outputs and the RCA outputs at the same time; this may affect your output. To set your desired volume, use the *Master Volume (5)* knob.

(34) RCA Inputs – RCA connectors for CD players, turntables, and other analog inputs.

- **MIDILOG 1 & 2:** Phono/Line level RCA inputs are used to connect turntables, CD players, MP3 players, or other line level sources. The type of input must directly reflect the selected mode of the *Line/Phono Selector Switch*. Turntables equipped with MM pickup cartridges (All DJ turntables use MM pickup cartridges) may be connected to these jacks as long as the *Line/Phono Selector Switch* is in the *Phono* position. CD players, MP3 players, and other line level instruments may only be connected to these jacks as long as the *Line/Phono Selector Switch* is in the *Line* position.

(35) Phono Ground – Be sure to connect turntable ground leads to either or both of the two available ground terminals. This will reduce the humming and popping noises associated with magnetic phono cartridges.

(36) MIC – XLR and 1/4" combo jack for microphone connection. The volume output level for the microphone will be controlled by its own respective volume knob.

(37) Line/Phono Selector Switches – These switches are used to change the voltage line levels of their respective Line/Phono RCA inputs jacks. When connecting turntables with magnetic cartridges to these jacks, be sure the corresponding switch is in the *Phono* position; and when using line level input devices be sure this switch is in the *Line* position.

(38) USB Port – Connect here to your PC for MIDI interface and USB interface (audio ins and outs).

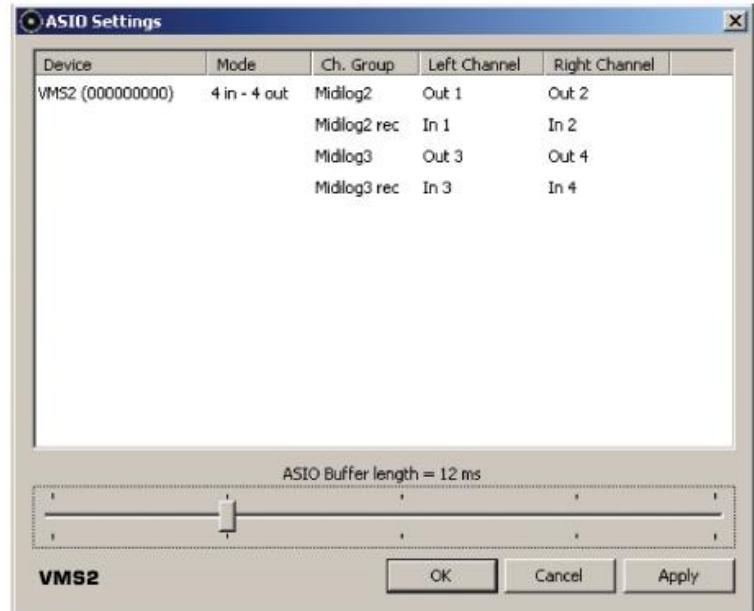
(39) Power Supply – The power supply is not required, but the headphones may be underpowered, and there is an increased chance of audio distortion.

13. AUDIO INTERFACE MODE

13.1 4 OUT MODE

The VMS2™ can act like a 4x4 audio interface. Your USB audio is routed through the VMS2™'s MIDILOG Ch. #1 and #2 inputs.

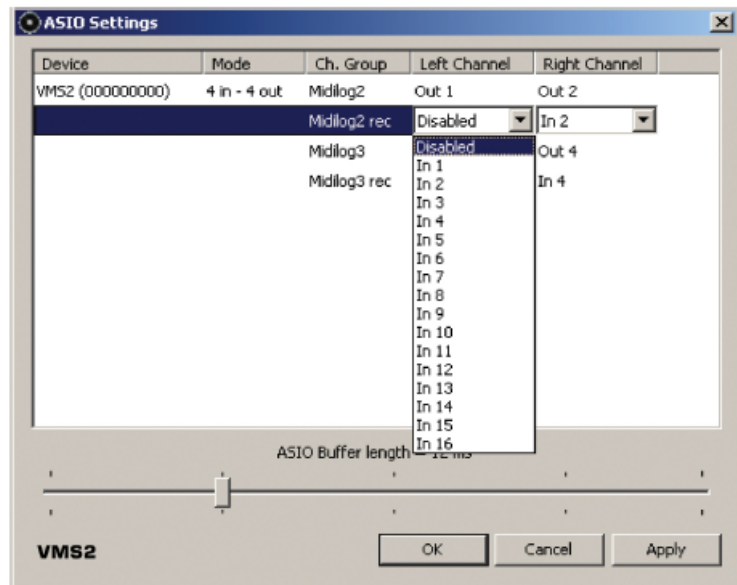
If you wish to route the inputs via USB for software play through or Timecode control, set your desired VMS2™ Channel to the USB setting and the channels' *Line/Phono Selector Switch (37)* to the correct setting.



Note: For the best performance, if no inputs are in use, set the Inputs to Disabled by clicking on the ASIO Driver Interface.

Your inputs and outputs can be set to channels 1-8, but your software may not support the ASIO stream of the channel numbers.

Check the software manual to make sure it does.



14. MIDI LATENCY MODES

There are two MIDI latency modes; *Normal* mode and *Turbo* mode. *Normal* mode has a MIDI latency of 10 milliseconds, this is the default mode. *Turbo* mode has a MIDI latency of 1 millisecond.

To set the VMS2™ to *Turbo* mode, do as follows:

Before powering on, press and hold the *Cue*, *Play*, and *Pause* buttons on the left side.

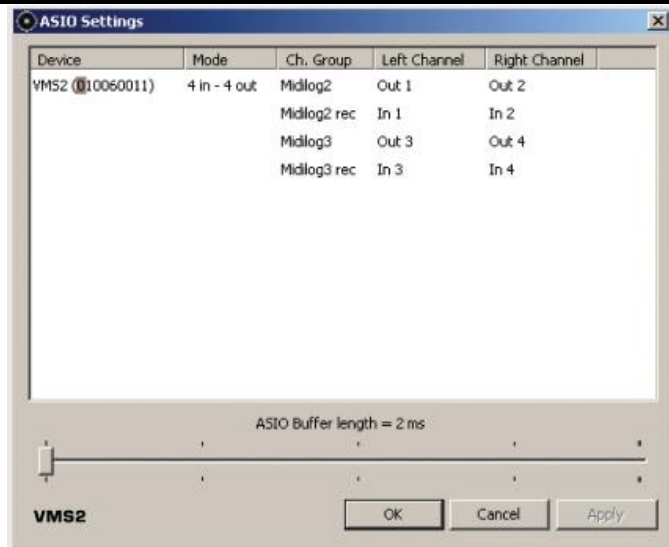
Hold the buttons until the *Channel Volume Level Indicators (13)* light up with the code version. Read more about the firmware version in chapter **12.1 Player Front** (*under 13 - Channel Volume Level Indicators*).

It is recommended that you use the default mode if your computer does not meet the recommended system requirements or if you are using Windows Vista. It is also strongly recommended that you close all programs running in the background; this will free up RAM and minimize the CPU process. If you are using a laptop, turn off your wireless card if possible, since this may cause sound problems. Allow your computer's hard drive to have at least 20% free space.

15. EQ MODES

The EQ for the USB audio can work in two different modes, *Pre* & *Post EQ*. These EQ modes work in the 4 out interface mode that is described in chapter 13.1 4 Out Mode.

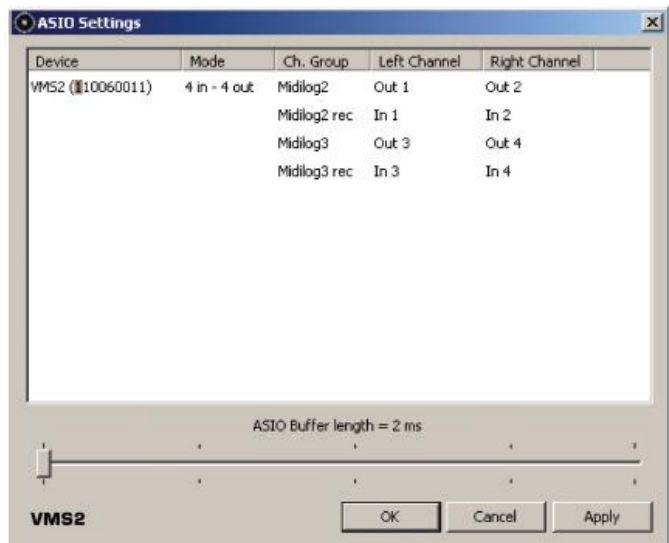
In *Pre EQ*, the USB audio signal is affected by the VMS2™ EQ. *Pre EQ* is the default EQ. In *Pre EQ* mode the ASIO Driver will list the VMS2™ device number; the first number in the sequence will be a "0" (See picture).



Note: Beware that mapping the MIDI on the EQ knobs in this mode will cause your audio to process the EQ from the software and VMS2™ EQ.

Post EQ is for users who prefer using the EQ from their software. To toggle the *Post EQ* mode on and off, do as follows:

- Before powering up the VMS2™, press and hold the *Forward Search Button (8)* on deck 2 and then power on the unit.
- Release the button - your computer may reinstall the VMS2™ as a new device, please allow 10-20 seconds for the change to take place.



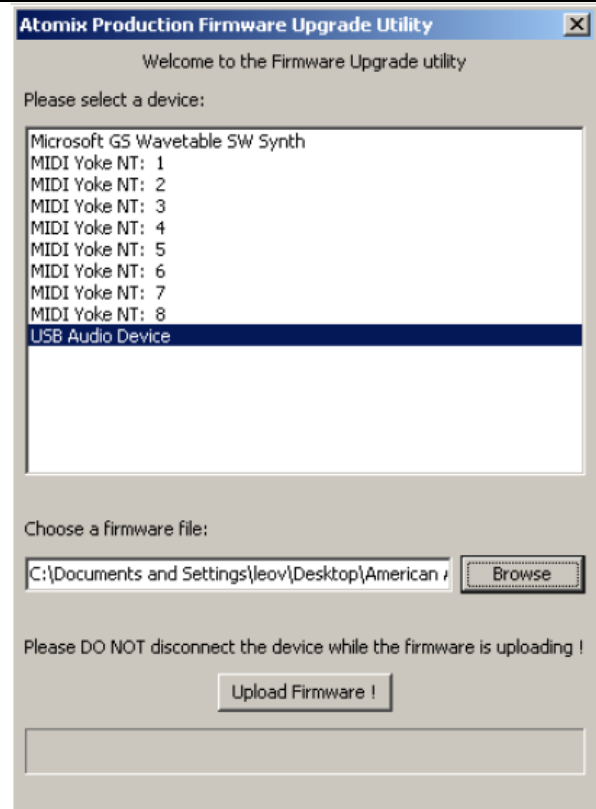
Confirm the EQ change by checking the ASIO Driver configuration. The first number in the sequence will be a "1" in this mode (See picture).

Note: Make sure you are using software where you can map the MIDI from the EQ and that the EQ has been mapped when using this mode.

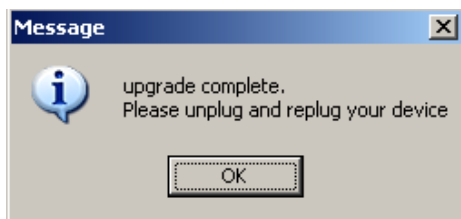
16. FIRMWARE UPDATE

The included version of Virtual DJ includes a Firmware update utility. It is necessary to install this. To update your VMS2™:

- Please check your computer audio settings and ensure that the VMS2™ is not set as a default playback, playback recording, or MIDI device. This will interfere with the update and software applications.
- Click *Start Menu > All Programs > Virtual DJ > FIRMWARE Update.*
- Select the VMS2™ or USB Audio Device (Windows XP). Load the update file by clicking browse and going to the file location.



- Wait until the bar is filled in completely and "Upgrade Complete" is displayed.



- Unplug the USB and shut down the VMS2™.

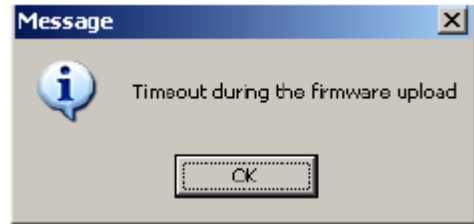


You may receive some Error windows like you see below.

Select the proper device in device select window.



Please check your computer audio setting and ensure that the VMS2™ is not set as a default playback, playback recording, or MIDI device. This will interfere with the update and software applications. Also, make sure that any software that uses MIDI or the Audio interface is closed.

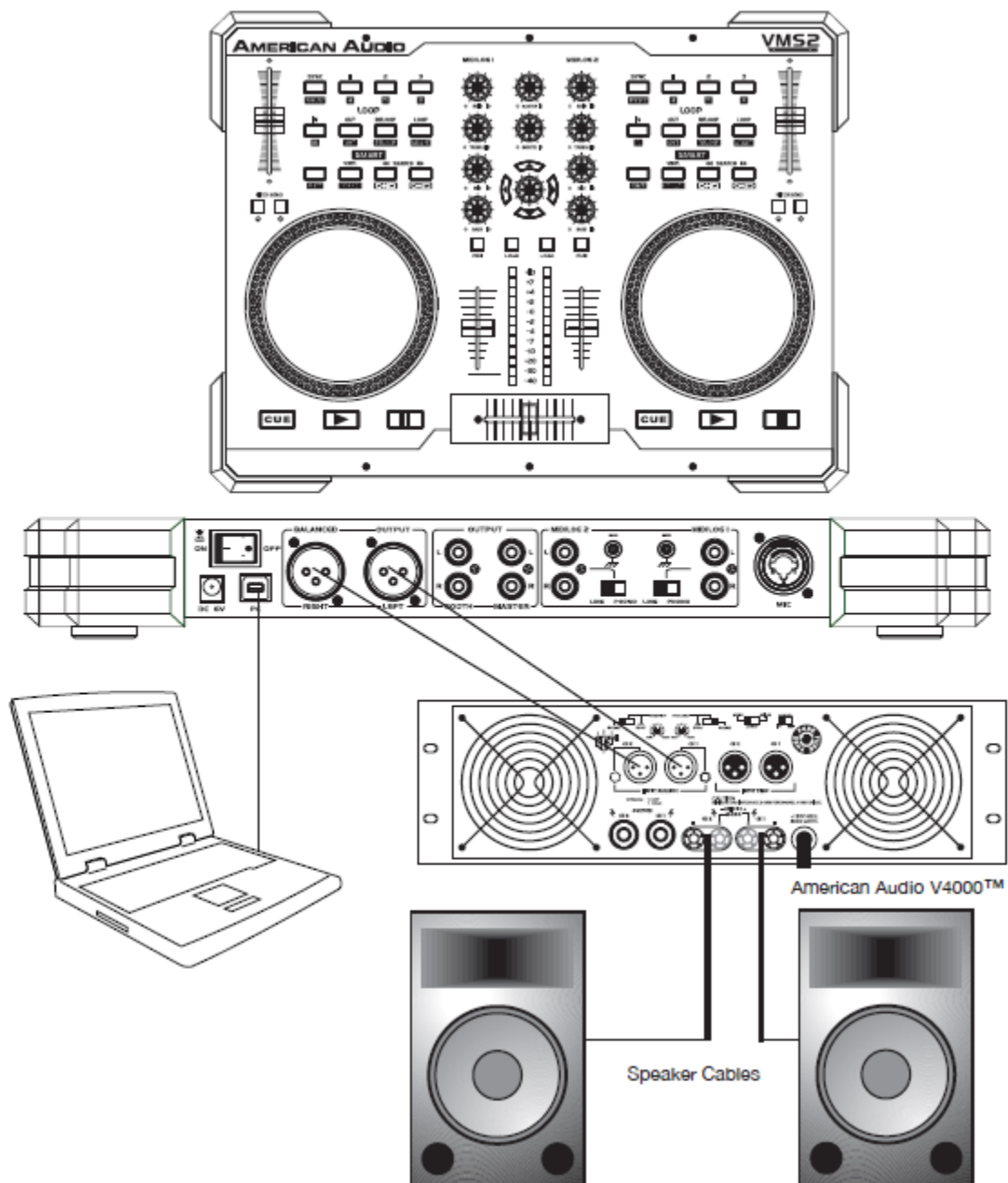


17. COMPUTER CONNECTION

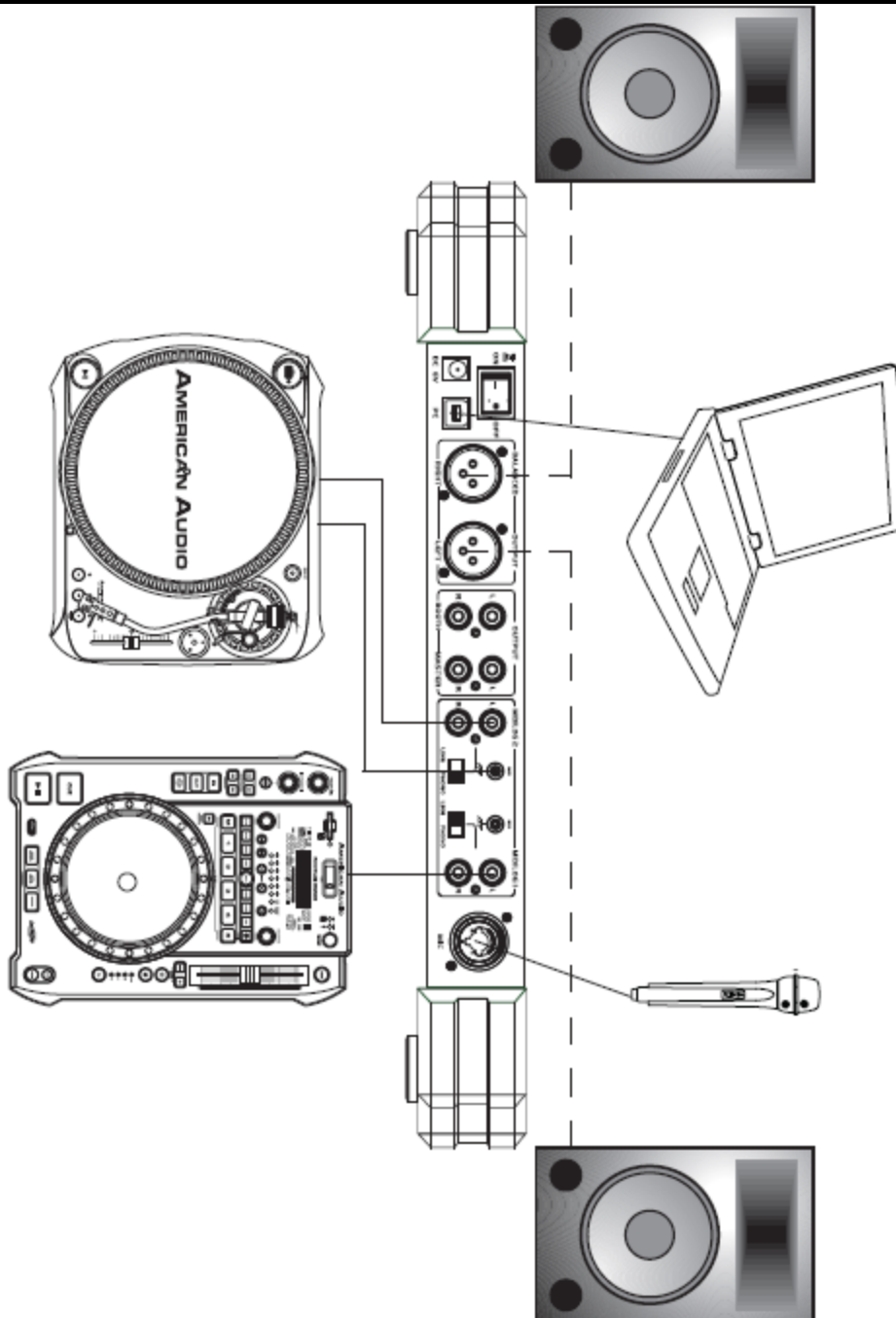
17.1 CONNECTING THE VMS2™ TO YOUR PC

Connect the VMS2™ to your PC by using the USB ports located on the rear of the VMS2™ and your PC. Connect the supplied USB cable to the USB port on the rear of the VMS2™, and the other end connects to the USB port on your computer.

Note: Before connecting your VMS2™ to your computer or laptop, we highly recommend that you install the provided software. The Virtual DJ version included with this product is specifically tailored to work with the VMS2™ with no setup required. The setup of other non-factory authorized drivers and software is far more complex and in some instances not as reliable.



18. SETUP



19. CLEANING

Due to fog residue, smoke, and dust, cleaning the mixer should be carried out periodically to residue build up.

- Use normal glass cleaner and a soft cloth to wipe down the outside casing.
- Use a cleaner specially designed for electronics to spray in and around the knobs and switch. This will reduce small particle built up that can affect the proper operation of the device.
- Cleaning should be carried out every 30-60 days to prevent heavy built up.
- Always be sure to dry all parts completely before plugging the device in.

Cleaning frequency depends on the environment in which the device operates (i.e. smoke, fog residue, dust, dew).

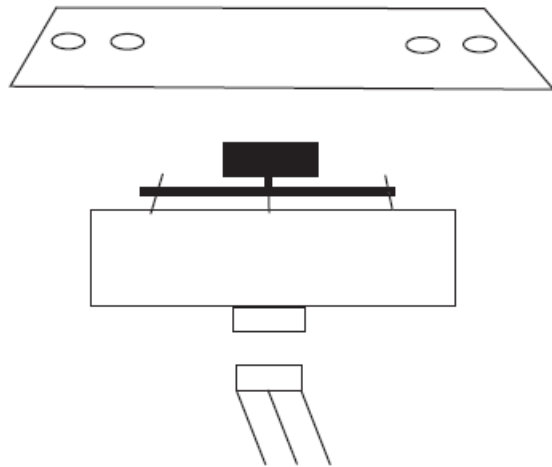
20. CROSSFADER REPLACEMENT

The crossfader is “Hot Swappable” which means it may be replaced at any time, even when power is applied.

Replace with American Audio VMS2™ crossfader (part# Z-FF-8).

If you wish to upgrade to an Innofader, please order the Innofader model which comes with the VMS2™ plate cover to protect the Innofader from damage during handling of the VMS2™. If you upgrade to the Innofader, please make sure the power is off before upgrading to limit the chance of damage to the Innofader and/or VMS2™ during installation.

Replacing with any other model fader may seriously damage your mixer.



20.1 REPLACING THE CROSSFADER

1. Disconnect the mixers main power supply.
2. Using a Phillips screw driver, unscrew the two outside screws on each side that hold the cross fader assembly in place.
3. Gently remove the crossfader assembly from its seated position. You may need to wiggle the crossfader slightly to remove it.
4. After removing the crossfader assembly, disconnect the ribbon cable that attaches the cross fader to the PC board. Grasp the crossfader by its base and pull the ribbon cable by its connector not the actual cables. The connector is designed to only fit one way, so don't worry about the connector's orientation.
5. Unscrew the two inner screws that connect the crossfader to the crossfader plate.
6. Connect the new crossfader to the ribbon cable and replace in reverse order.

Note: For Innofader installation instructions please visit:
<http://innofader.com/mixers.php?id=75>

21. ROHS – A CONTRIBUTION TO THE CONSERVATION OF ENVIRONMENT

The European Union has adopted a directive on the restriction/prohibition of the use of hazardous substances. This directive, referred to as ROHS, is a frequently discussed topic in the electronic industry.

It restricts, among other things, six materials: Lead (Pb), Mercury (Hg), Hexavalent Chromium (CR VI), Cadmium (Cd), Polybrominated Biphenyls as flame retardant (PBB), Polybrominated Diphenyl, also a flame retardant (PBDE). The directive applies to nearly all electronic and electrical devices whose mode of operation involves electric or electromagnetic fields – in short: each kind of electronics we have around us in our households or at work.

As manufacturers of products of the brands of AMERICAN AUDIO®, AMERICAN DJ®, ELATION Professional and ACCLAIM Lighting, we are obligated to comply with the ROHS directive. Therefore, as early as two years prior to the directive coming into force, we started our search for alternative environmentally friendly materials and manufacturing processes.

Well before the ROHS directive took effect, all of our products were manufactured meeting the standards of the European Union. With regular audits and material tests we can still assure that the components we use are always ROHS-compliant and that the manufacturing process, as far as the state of technology allows, is environmentally friendly.

The ROHS directive is an important step to the protection of our environment. We, as manufactures, feel obligated to make our contribution in this respect.

22. WEEE – WASTE OF ELECTRICAL AND ELECTRONIC EQUIPMENT

Every year thousands of tons of electronic components, which are harmful to the environment, end up at the waste disposals around the world. To ensure the best possible disposal or recovery of electronic components, the European Union has adopted the WEEE directive.

The WEEE-system (Waste of Electrical and Electronic Equipment) can be compared with the system of the “Green Spot”, which has been in use for several years. The manufactures have to make their contribution to the utilization of waste at the time they release the product. Money resources obtained by doing so will be applied to develop a common system of waste management. Thereby we can ensure professional and environmentally friendly scraping and recycling program.

As manufactures, we are part of the German system of EAR and we make our contribution towards it.

(Registration in Germany: DE41027552)

That means that products of AMERICAN DJ® and AMERICAN AUDIO® can be left in the collection points free of charge and they will be used in the recycling program. Products of ELATION Professional, which are used only by professionals, shall be handled by us. Please send Elation products directly to us at the end of their lifetime so that we can professionally dispose of them.

Like the above ROHS, the WEEE directive is an important contribution to the environment protection and we are glad to help to clean the environment with this disposal system.

We are happy to answer any of your inquiries and welcome your suggestions at:
info@americandj.eu

23. SPECIFICATIONS

Model:	American Audio® VMS2™ - PC Media Controller
Dimensions:	399 (L) x 300 (W) x 40 (H) mm 15.7" (L) x 12 (W) x 1.5" (H)
Installation:	Place on flat surface or mount in flat case
Weight:	10,9 Lbs. / 4,93 Kg
Power supply:	DC 6V Single Voltage AC 100V, 50/60Hz (Japan) AC 110V, 60Hz (Colombia) AC 120V, 60Hz (U.S.A. and Canada) AC 127V, 60Hz (Mexico) AC 220V, 50Hz (Chile and Argentina) AC 220V, 60Hz (Philippines and Korea) AC 230V, 50Hz (Europe, New Zealand, South Africa, Singapore) AC 240V, 50Hz (Australia and U.K.)
Power Consumption:	6W
Environ. Conditions:	Operating Temperature: 5 to 35°C Humidity: 25 to 85% RH (non-condensing) Storage Temperature: -20 to 60°C
Accessories:	USB 2.0 Cable Switching Adaptor

ITEM	NORMAL	LIMIT	CONDITION
Output Level			
• Gain Max, EQ Flat	5V +/-0.5dB	5V +/-1dB	
• Line & Mixed Out	5.5V +/-0.5dB	5.5V +/-1dB	1KHz, 0dB
• Phones	2V	1,8V	1KHz, -20dB

Channel Balance (From 0 to -40db For Mixed Out)

- Line Within 0,5dB
- Mixed Out Within 1dB

L/R Separation

- Line 97dB 85dB 1KHz, 0dB
- Mixed Out 95dB 85dB 1KHz, 0dB (Max. Out, EQ Flat)

T.H.D. + NOISE

- Line 0,025% 0,03% 1KHz, 0dB
- Mixed Out 0,025% 0,03% 1KHz, 0dB (Max. Out, EQ Flat)
- Phones 0,045% 0,03% 1KHz, 0dB (1V Output)

S/N Ratio

- Line 97dB 85dB 1KHz, 0dB
- Mixed Out 97dB 85dB 1KHz, 0dB (Max. Out, EQ Flat)

Dynamic Range (Max. Output, EQ Flat)

- Line 96dB 85dB 1KHz,-60dB
- Mixed Out 94dB 85dB 1KHz,-60dB

Frequency Response

- Line 10-20KHz +/-0,3dB 10-20KHz +/-1dB
- Mixed Out 10-20KHz +/-0,3dB 10-20KHz +/-1dB

Phones

- Max. Output 2V 1,8V 1KHz, 0dB, THD=1%

NOTES:

Specifications and improvements in the design of this unit and this manual are subject to change without any prior written notice.

CHECK THE AMERICAN AUDIO WEBSITE FOR DOWNLOADABLE USER SOFTWARE UPDATES.



**©American Audio® World Headquarters
6122 S. Eastern Ave.
Los Angeles, CA 90040 USA
Tel: 323-582-3322
Fax: 323-582-3311
www.americanaudio.us
info@americanaudio.us**

**American DJ Europe
Junostraat 2
6468 EW Kerkrade
Netherlands
Tel: +31 45 546 85 00
Fax: +31 45 546 85 99
www.americandj.eu
service@americandj.eu**