

# Focus Spot 7Z



Light Efficiency:

21 Lumen/Watt

Light Quality:

CRI: 70.4

Color Temperature:

6235 K

Output: 11998 lm

Peak: 1425452 cd

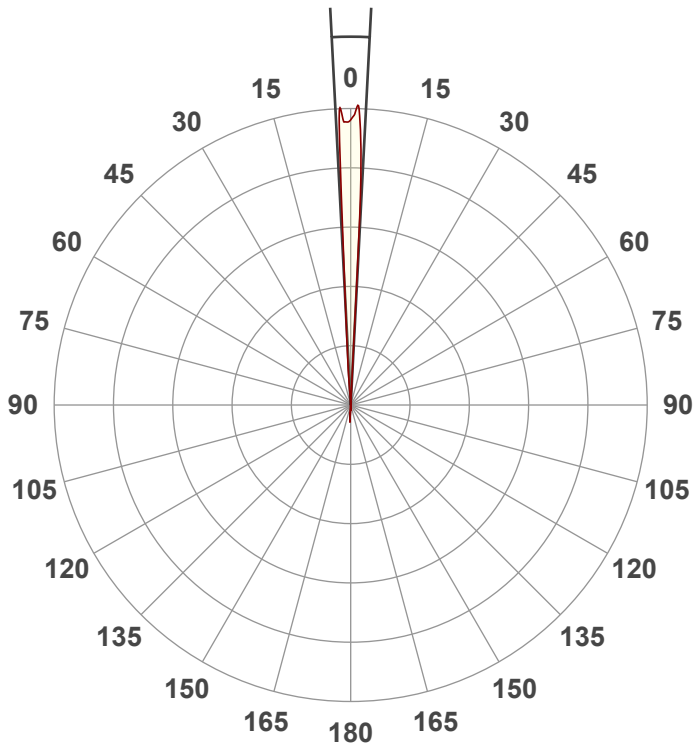
Power: 564 W

PF: 1.0



Beam Angle

5.9°



Test:

Zoom In

Date:

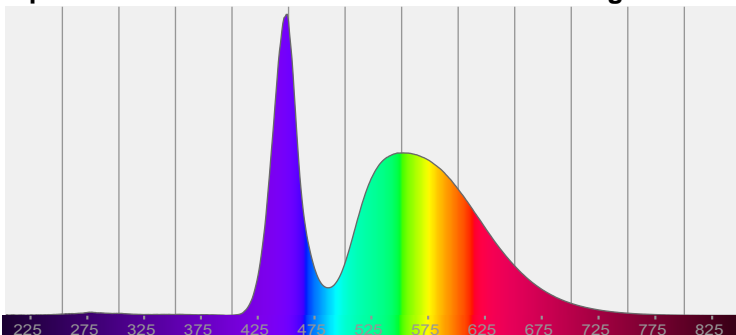
7/25/2022

Note:

CIE 1931  
x: 0.318  
y: 0.330

Spectra

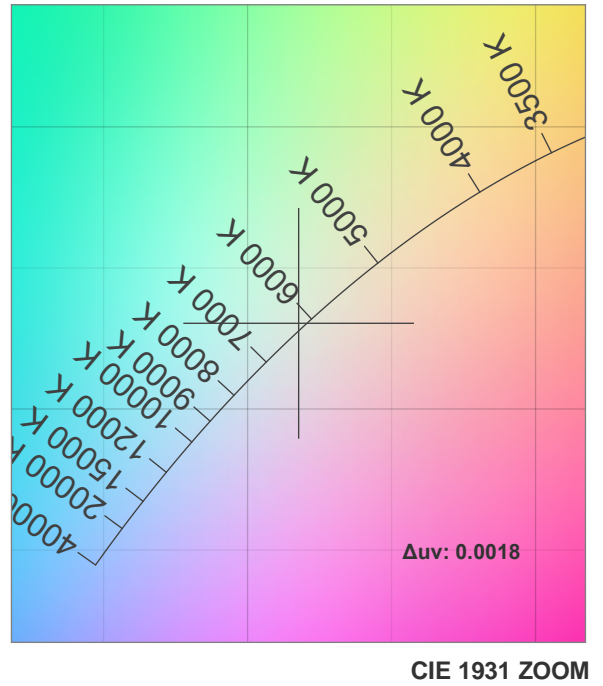
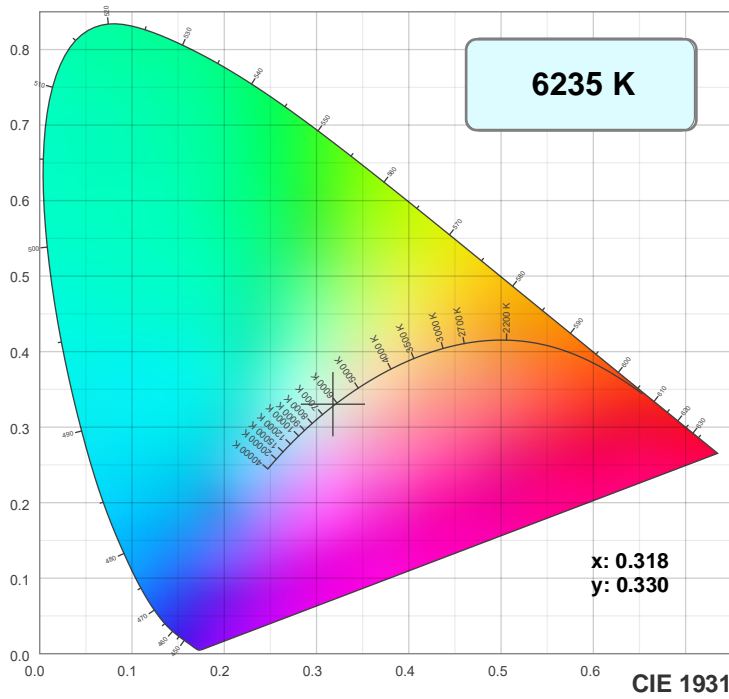
Dominant Wavelength: 593nm



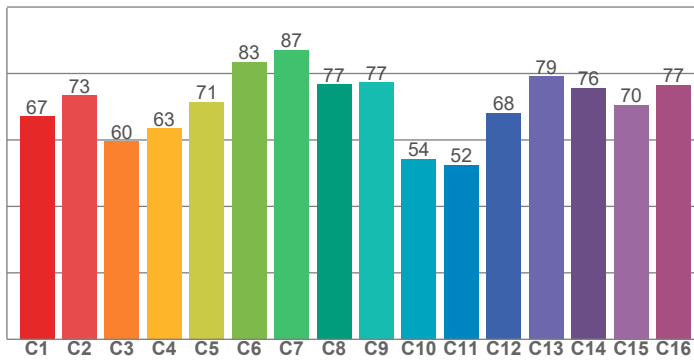
Power

Voltage: 118 V  
Current: 4.80 A  
Frequency: 0 Hz

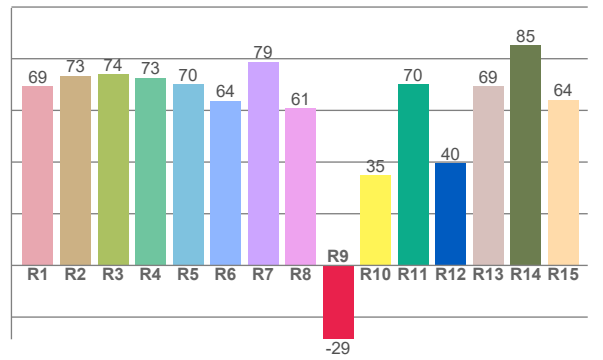
## Color Details



**TM30: 70.4**



**CRI: 70.4 (R1-R8)**



**CRI R values, only R1-R8 are used to calculate final CRI value**

R1	R2	R3	R4	R5	R6	R7	R8	R9	R10	R11	R12	R13	R14	R15
69.4	73.4	74.0	72.6	70.2	63.8	78.8	60.7	-28.6	34.9	70.2	39.6	69.3	85.1	64.1

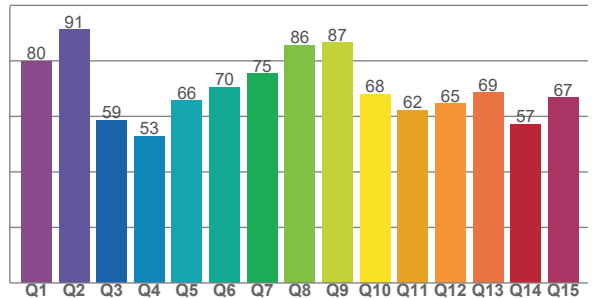
**TM30 C values, 16 binned values out of total of 99 C values**

C1	C2	C3	C4	C5	C6	C7	C8	C9	C10	C11	C12	C13	C14	C15	C16
67.1	73.4	59.5	63.5	71.5	83.5	87.1	76.7	77.3	54.4	52.5	68.1	79.1	75.7	70.5	76.6

**CQS Q values**

Q1	Q2	Q3	Q4	Q5	Q6	Q7	Q8	Q9	Q10	Q11	Q12	Q13	Q14	Q15
79.9	91.2	58.6	52.9	65.7	70.5	75.3	85.6	86.6	68.0	62.2	64.7	68.6	57.2	66.7

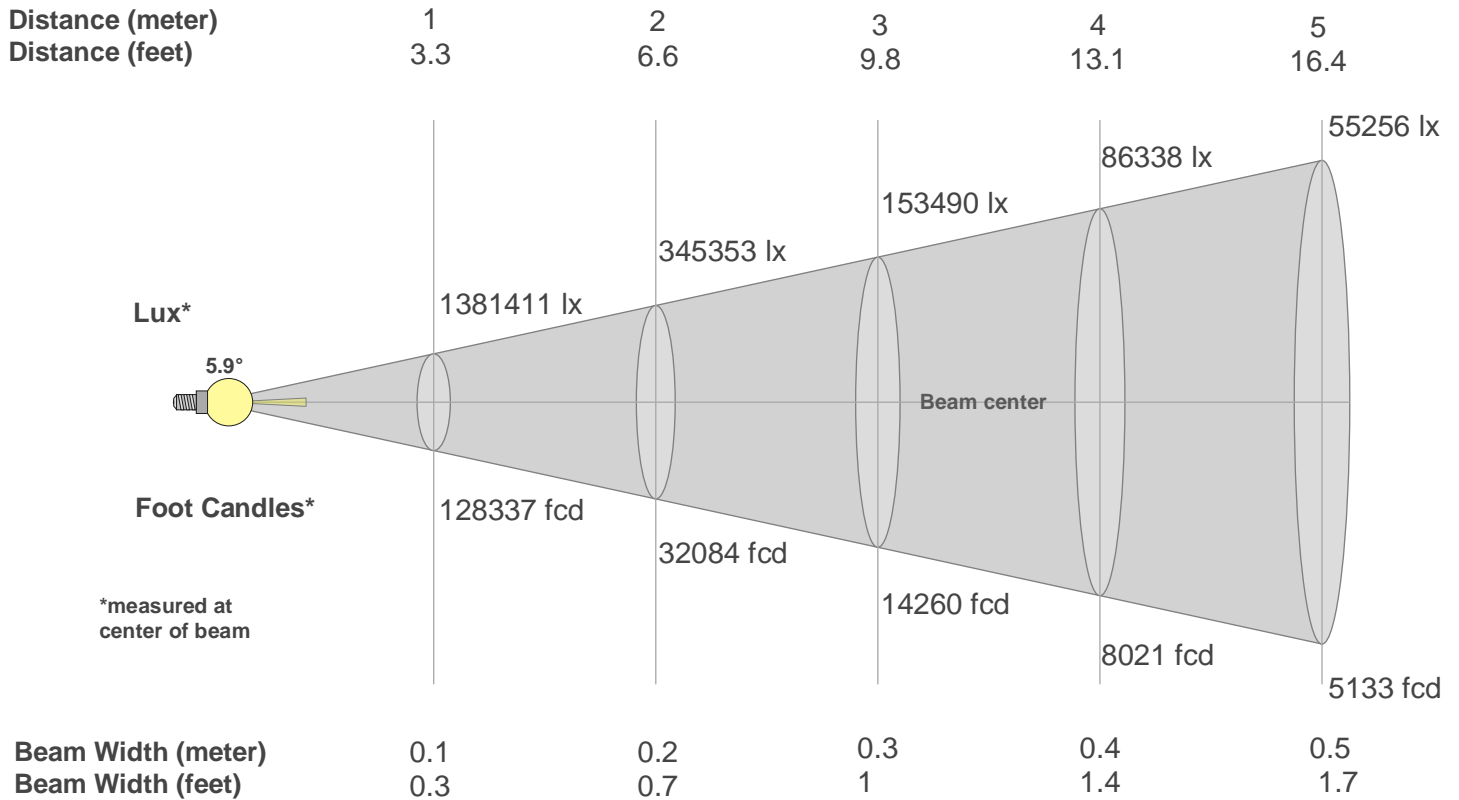
**CQS: 68.3**



## Color Parameters

Color Temperature	Color Rendering Index	Red Component	Color Fidelity	Color Gamut	Color Quality Scale	Color Coordinate CIE 1931	Color Coordinate CIE 1931	Color Coordinate	Color Coordinate	Color Deviation from Black Body
CCT	CRI	CRI R9	TM30 Rf	TM30 Rg	CQS	x	y	u	v	Δuv
6235 K	70.4	-28.6	70.4	94.4	68.3	0.318	0.330	0.201	0.313	0.0018

## Beam Details



### Beam Intensities from 1-20m

m	1	2	3	4	5	6	7	8	9	10	11	12	13	14	15	16	17	18	19	20
ft	3.3	6.6	9.8	13.1	16.4	19.7	23	26.2	29.5	32.8	36.1	39.4	42.7	45.9	49.2	52.5	55.8	59.1	62.3	65.6
lx	13814 11	345353	153490	86338	55256	38373	28192	21585	17054	13814	11417	9593	8174	7048	6140	5396	4780	4264	3827	3454
fcd	12833 7.2	32084.3	14259.7	8021.1	5133.5	3564.9	2619.1	2005.3	1584.4	1283.4	1060.6	891.2	759.4	654.8	570.4	501.3	444.1	396.1	355.5	320.8

### Intensities in 0° C-plane

0°	1°	2°	3°	4°	5°	6°	7°	8°	9°	10°	11°	12°	13°	14°	15°	16°	17°	18°	19°
1.4M	1.4M	1.4M	0.7M	0.1M	0.0M	0.0M	0.0M	0.0M	0.0M	0.0M	0.0M	0.0M	0.0M	0.0M	0.0M	0.0M	0.0M	0.0M	0.0M
100%	99%	99%	48%	8%	0%	0%	0%	0%	0%	0%	0%	0%	0%	0%	0%	0%	0%	0%	0%

### Intensities in 90° C-plane

0°	1°	2°	3°	4°	5°	6°	7°	8°	9°	10°	11°	12°	13°	14°	15°	16°	17°	18°	19°
1.4M	1.4M	1.4M	0.7M	0.1M	0.0M	0.0M	0.0M	0.0M	0.0M	0.0M	0.0M	0.0M	0.0M	0.0M	0.0M	0.0M	0.0M	0.0M	0.0M
100%	99%	99%	48%	8%	0%	0%	0%	0%	0%	0%	0%	0%	0%	0%	0%	0%	0%	0%	0%

### Intensities in 180° C-plane

0°	1°	2°	3°	4°	5°	6°	7°	8°	9°	10°	11°	12°	13°	14°	15°	16°	17°	18°	19°
1.4M	1.4M	1.3M	0.7M	0.0M	0.0M	0.0M	0.0M	0.0M	0.0M	0.0M	0.0M	0.0M	0.0M	0.0M	0.0M	0.0M	0.0M	0.0M	0.0M
100%	102%	93%	48%	0%	0%	0%	0%	0%	0%	0%	0%	0%	0%	0%	0%	0%	0%	0%	0%

### Intensities in 270° C-plane

0°	1°	2°	3°	4°	5°	6°	7°	8°	9°	10°	11°	12°	13°	14°	15°	16°	17°	18°	19°
1.4M	1.4M	1.3M	0.7M	0.0M	0.0M	0.0M	0.0M	0.0M	0.0M	0.0M	0.0M	0.0M	0.0M	0.0M	0.0M	0.0M	0.0M	0.0M	0.0M
100%	102%	93%	48%	0%	0%	0%	0%	0%	0%	0%	0%	0%	0%	0%	0%	0%	0%	0%	0%

Beam Angle 50%	Field Angle 10%	Cutoff Angle 2,5%	Intensity Ratio in 120° Cone	Intensity Ratio in 90° Cone
5.9°	7.4°	7.8°	100.0%	100.0%