

# 32 Hex Panel IP W Diffuser



Light Efficiency:

26 Lumen/Watt

Light Quality:

CRI: 51.9

Color Temperature:

13180 K

Output: 5535 lm

Peak: 15773 cd

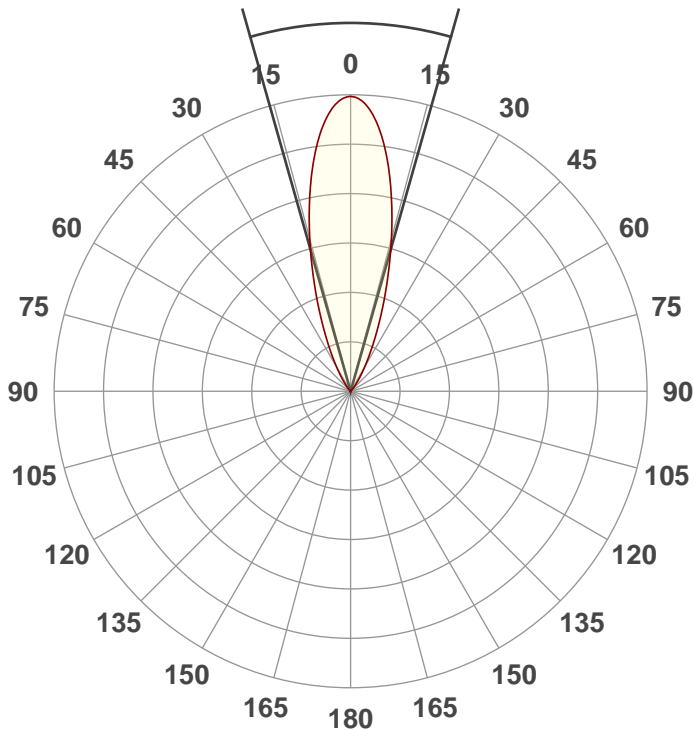
Power: 214.4 W

PF: 0.99



Beam Angle

31.6°



Test:

Full On No UV

Date:

3/6/2019

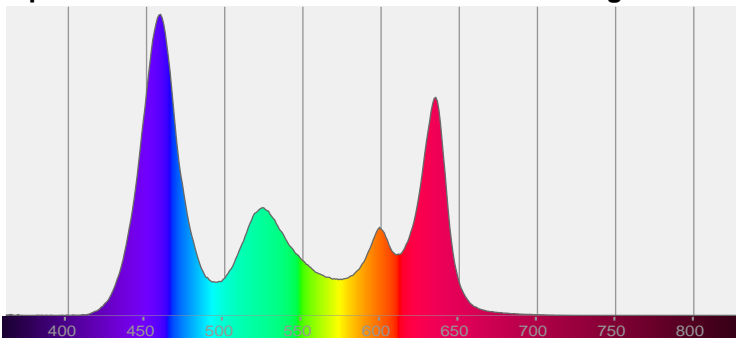
Note:



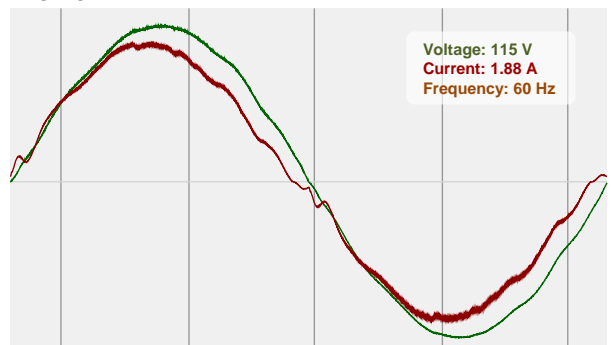
CIE 1931  
x: 0.290  
y: 0.243

Spectra

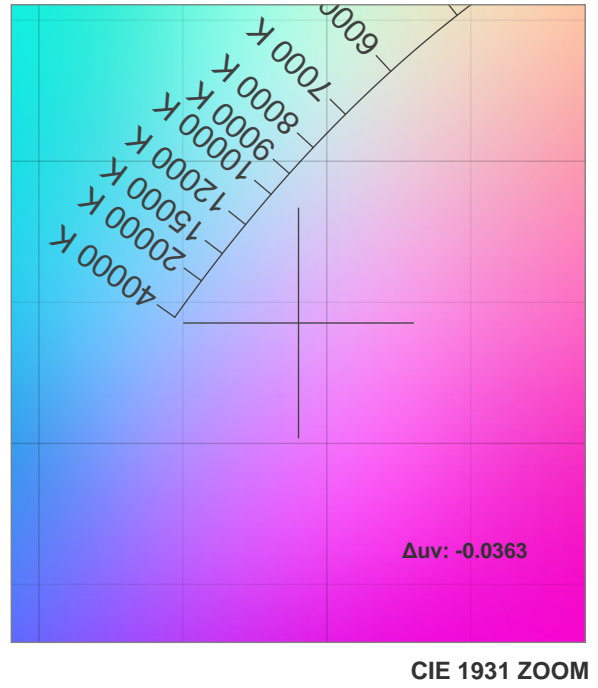
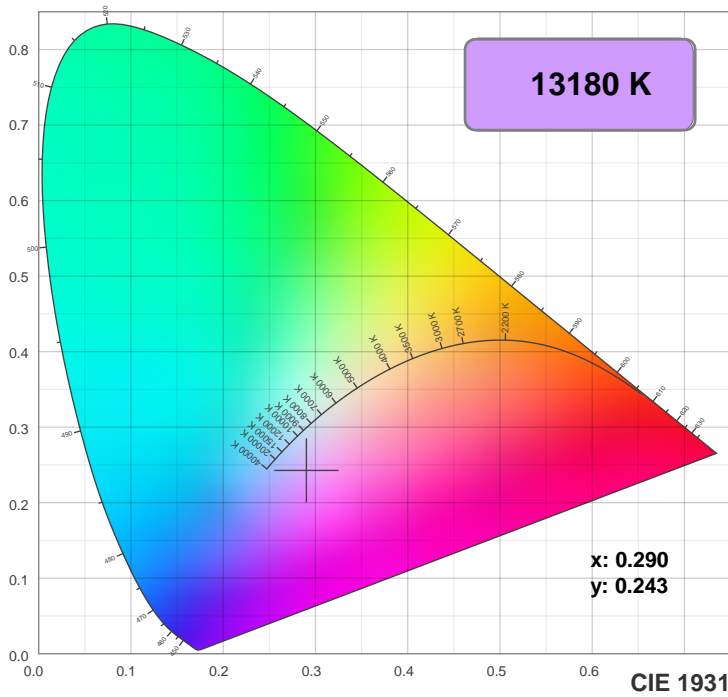
Dominant Wavelength: 360nm



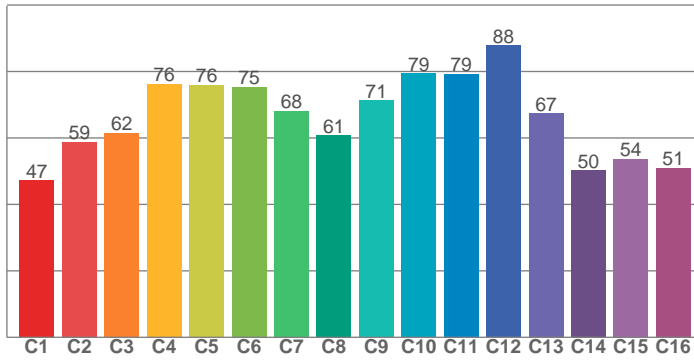
Power



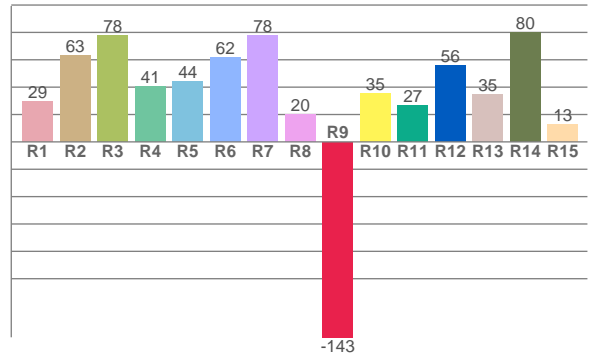
## Color Details



TM30: 67.8



CRI: 51.9 (R1-R8)



CRI R values, only R1-R8 are used to calculate final CRI value

R1	R2	R3	R4	R5	R6	R7	R8	R9	R10	R11	R12	R13	R14	R15
29.4	63.1	77.9	40.9	44.4	61.9	78.0	19.7	-142.8	35.4	27.0	56.0	34.8	80.1	13.0

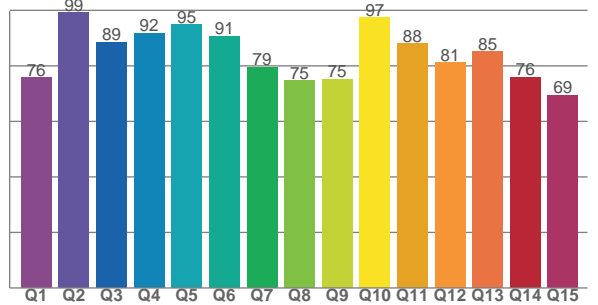
TM30 C values, 16 binned values out of total of 99 C values

C1	C2	C3	C4	C5	C6	C7	C8	C9	C10	C11	C12	C13	C14	C15	C16
47.2	58.8	61.6	76.2	75.9	75.4	68.1	60.8	71.3	79.3	79.3	87.8	67.5	50.3	53.7	51.0

CQS Q values

Q1	Q2	Q3	Q4	Q5	Q6	Q7	Q8	Q9	Q10	Q11	Q12	Q13	Q14	Q15
75.8	99.2	88.6	91.8	94.8	90.7	79.5	74.6	75.2	97.3	87.9	81.2	85.2	75.9	69.4

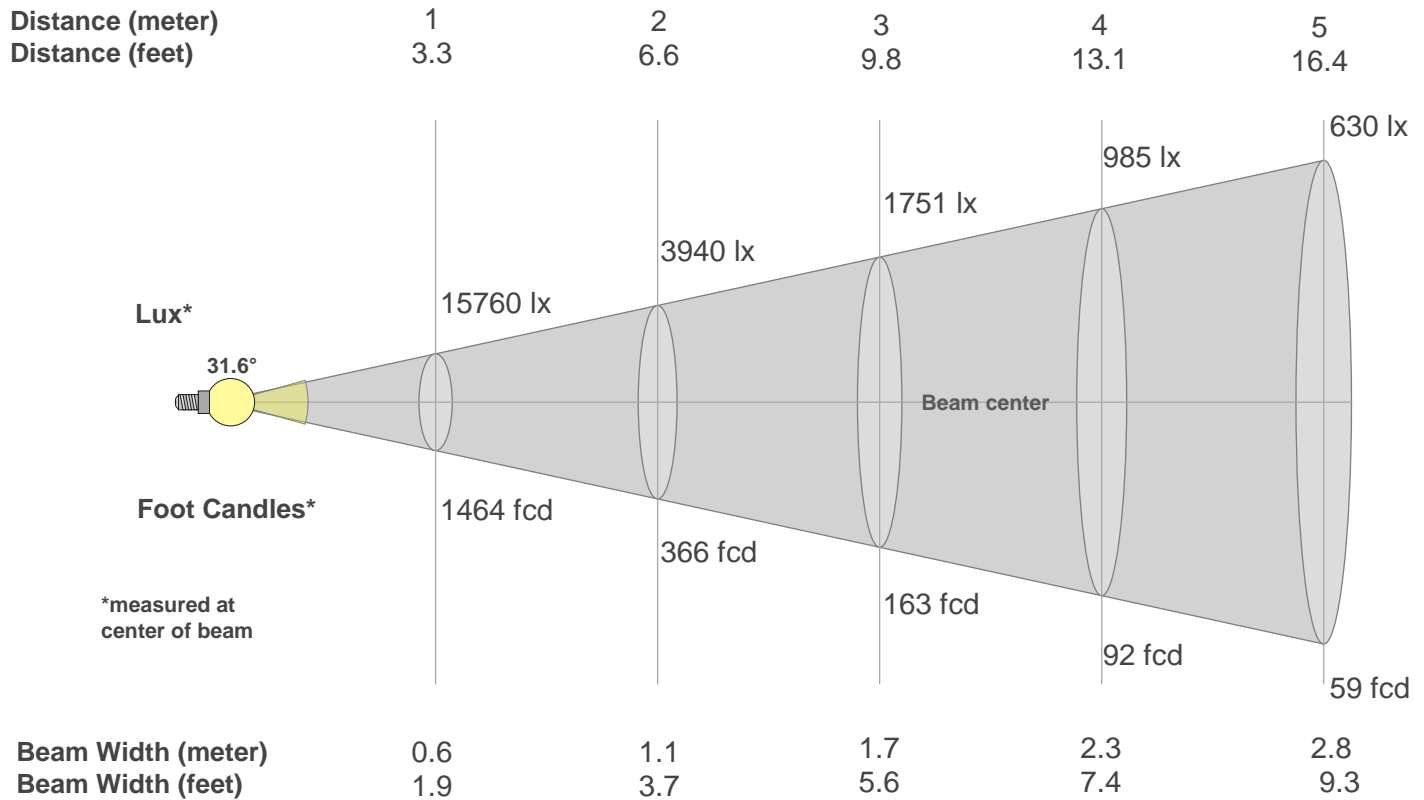
CQS: 82.1



## Color Parameters

Color Temperature	Color Rendering Index	Red Component	Color Fidelity	Color Gamut	Color Quality Scale	Color Coordinate CIE 1931	Color Coordinate CIE 1931	Color Coordinate	Color Coordinate	Color Deviation from Black Body
CCT	CRI	CRI R9	TM30 Rf	TM30 Rg	CQS	x	y	u	v	$\Delta uv$
13180 K	51.9	-142.8	67.8	114.6	82.1	0.290	0.243	0.218	0.273	-0.0363

## Beam Details



Beam Intensities from 1-20m

m	1	2	3	4	5	6	7	8	9	10	11	12	13	14	15	16	17	18	19	20
ft	3.3	6.6	9.8	13.1	16.4	19.7	23	26.2	29.5	32.8	36.1	39.4	42.7	45.9	49.2	52.5	55.8	59.1	62.3	65.6
lx	15760	3940	1751	985	630	438	322	246	195	158	130	109	93	80	70	62	55	49	44	39
fcd	1464.1	366	162.7	91.5	58.6	40.7	29.9	22.9	18.1	14.6	12.1	10.2	8.7	7.5	6.5	5.7	5.1	4.5	4.1	3.7

Intensities in 0° C-plane

0°	2°	4°	6°	8°	10°	12°	14°	16°	18°	20°	22°	24°	26°	28°	30°	32°	34°	36°	38°
15.8K	15.6K	15.1K	14.2K	13.2K	11.9K	10.5K	9.1K	7.8K	6.5K	5.3K	4.2K	3.4K	2.6K	2.0K	1.5K	1.1K	0.8K	0.6K	0.4K
100%	99%	96%	90%	84%	76%	67%	58%	49%	41%	34%	27%	21%	17%	13%	10%	7%	5%	4%	2%

Intensities in 90° C-plane

0°	2°	4°	6°	8°	10°	12°	14°	16°	18°	20°	22°	24°	26°	28°	30°	32°	34°	36°	38°
15.8K	15.6K	15.1K	14.2K	13.2K	11.9K	10.5K	9.1K	7.8K	6.5K	5.3K	4.2K	3.4K	2.6K	2.0K	1.5K	1.1K	0.8K	0.6K	0.4K
100%	99%	96%	90%	84%	76%	67%	58%	49%	41%	34%	27%	21%	17%	13%	10%	7%	5%	4%	2%

Intensities in 180° C-plane

0°	2°	4°	6°	8°	10°	12°	14°	16°	18°	20°	22°	24°	26°	28°	30°	32°	34°	36°	38°
15.8K	15.6K	15.1K	14.2K	13.1K	11.9K	10.5K	9.1K	7.8K	6.5K	5.3K	4.3K	3.4K	2.6K	2.0K	1.5K	1.1K	0.8K	0.6K	0.4K
100%	99%	96%	90%	83%	75%	67%	58%	49%	41%	34%	27%	21%	17%	13%	10%	7%	5%	4%	2%

Intensities in 270° C-plane

0°	2°	4°	6°	8°	10°	12°	14°	16°	18°	20°	22°	24°	26°	28°	30°	32°	34°	36°	38°
15.8K	15.6K	15.1K	14.2K	13.1K	11.9K	10.5K	9.1K	7.8K	6.5K	5.3K	4.3K	3.4K	2.6K	2.0K	1.5K	1.1K	0.8K	0.6K	0.4K
100%	99%	96%	90%	83%	75%	67%	58%	49%	41%	34%	27%	21%	17%	13%	10%	7%	5%	4%	2%

Beam Angle 50%	Field Angle 10%	Cutoff Angle 2,5%	Intensity Ratio in 120° Cone	Intensity Ratio in 90° Cone
31.6°	59.4°	75.8°	99.9%	99.5%