

# COB Cannon Wash ST DW



Light Efficiency:

31 Lumen/Watt

Light Quality:

CRI: 97.2

Color Temperature:

2783 K

Output: 2525 lm

Peak: 2992 cd

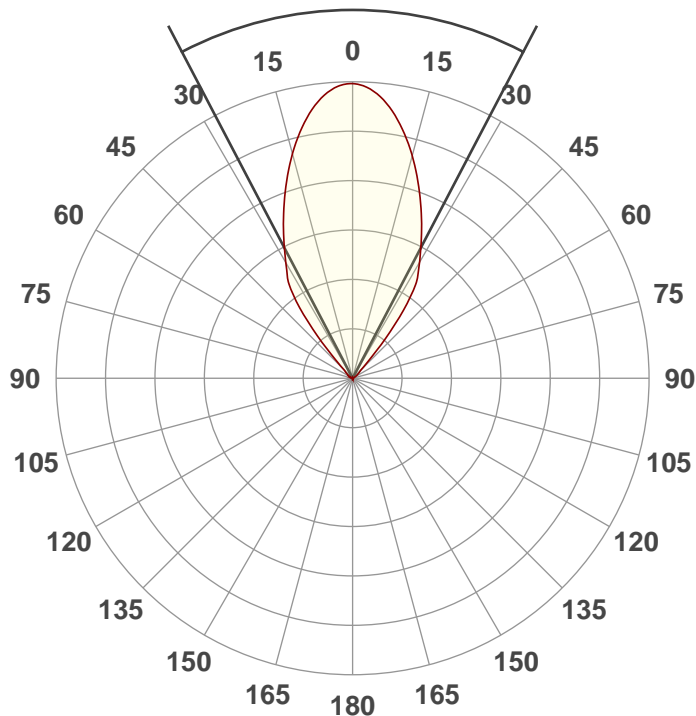
Power: 81.8 W

PF: 0.98



Beam Angle

55.2°



Test:

WW

Date:

9/28/2018

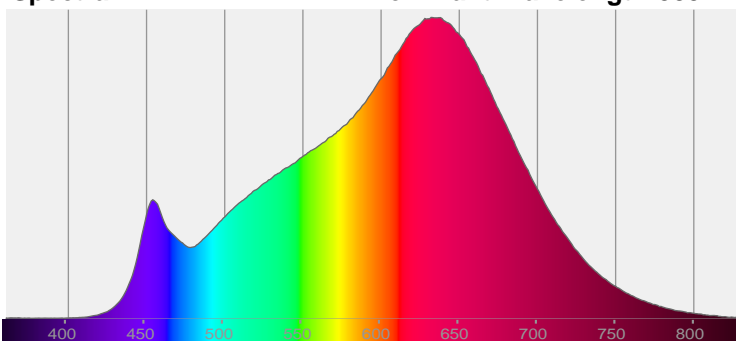
Note:



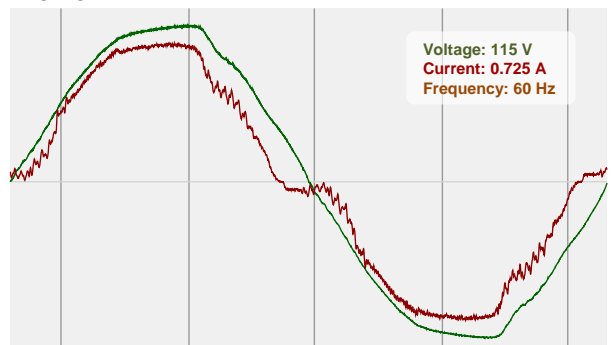
CIE 1931  
x: 0.449  
y: 0.402

Spectra

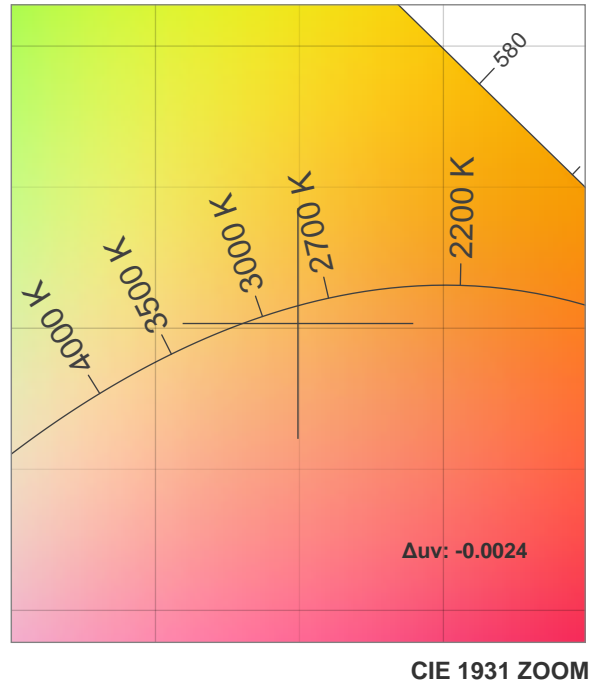
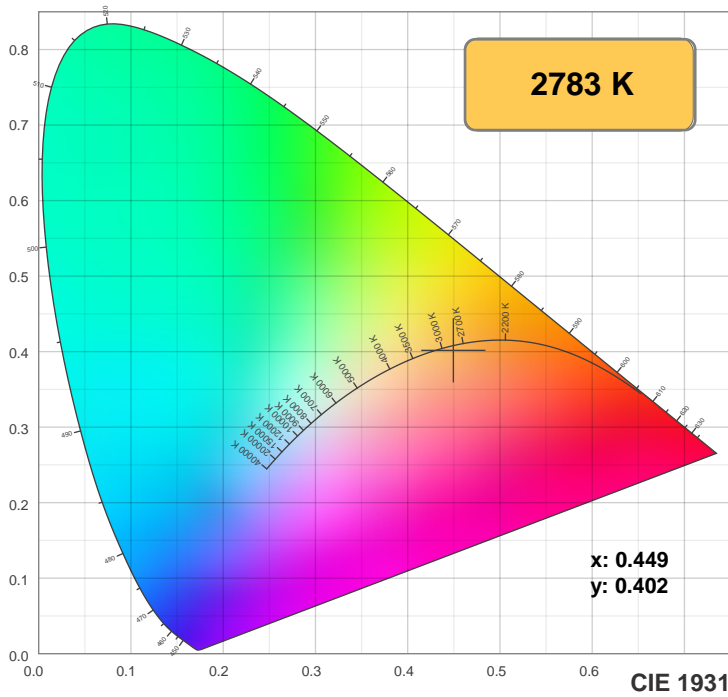
Dominant Wavelength: 585nm



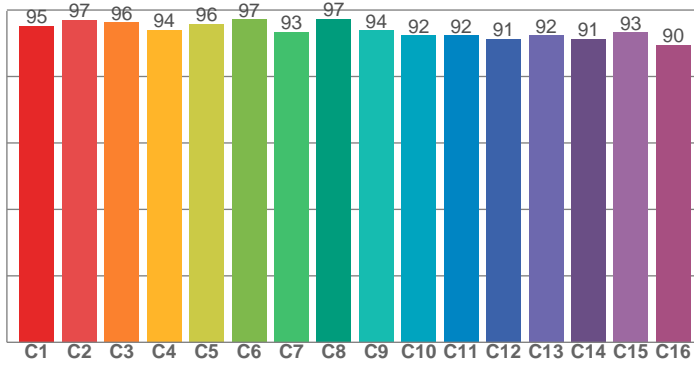
Power



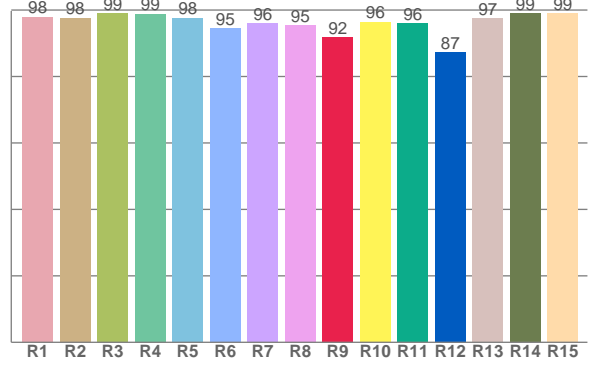
## Color Details



TM30: 94.1



CRI: 97.2 (R1-R8)



CRI R values, only R1-R8 are used to calculate final CRI value

R1	R2	R3	R4	R5	R6	R7	R8	R9	R10	R11	R12	R13	R14	R15
97.9	97.7	99.1	98.9	97.6	94.5	96.0	95.5	91.8	96.5	95.9	87.4	97.5	99.0	99.0

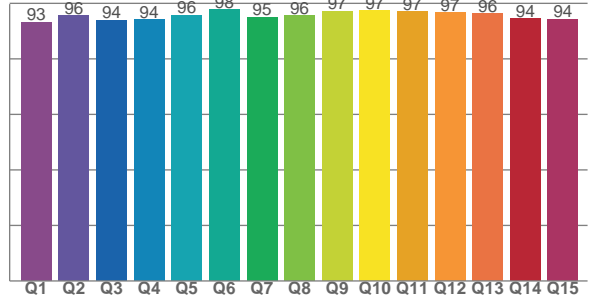
TM30 C values, 16 binned values out of total of 99 C values

C1	C2	C3	C4	C5	C6	C7	C8	C9	C10	C11	C12	C13	C14	C15	C16
95.3	97.0	96.3	94.0	95.9	97.1	93.4	97.4	93.9	92.4	92.3	91.2	92.3	91.3	93.3	89.5

CQS Q values

Q1	Q2	Q3	Q4	Q5	Q6	Q7	Q8	Q9	Q10	Q11	Q12	Q13	Q14	Q15
93.3	95.6	94.0	94.1	95.8	97.7	95.1	95.5	97.3	97.3	97.1	96.7	96.2	94.4	94.3

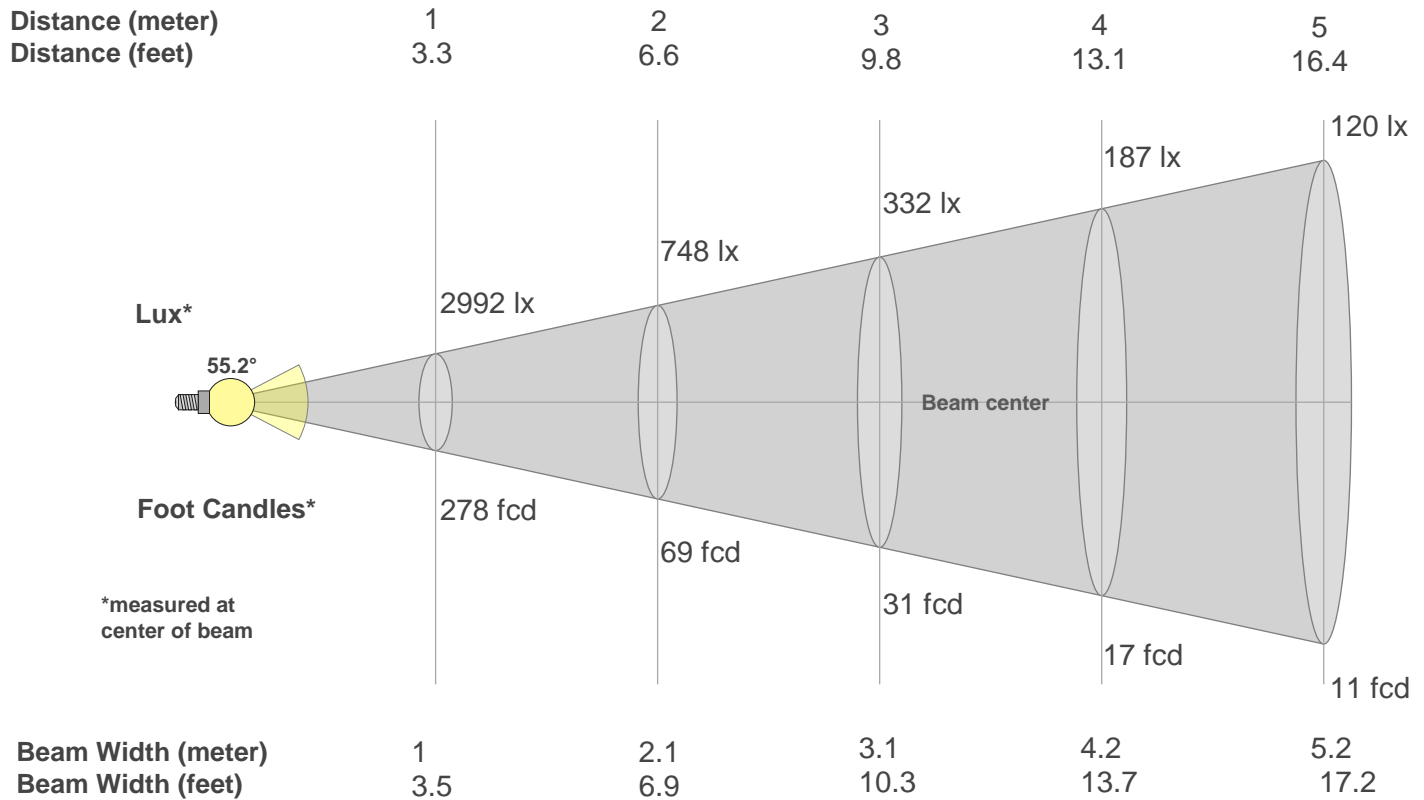
CQS: 95.3



## Color Parameters

Color Temperature	Color Rendering Index	Red Component	Color Fidelity	Color Gamut	Color Quality Scale	Color Coordinate CIE 1931	Color Coordinate CIE 1931	Color Coordinate	Color Coordinate	Color Deviation from Black Body
CCT	CRI	CRI R9	TM30 Rf	TM30 Rg	CQS	x	y	u	v	Δuv
2783 K	97.2	91.8	94.1	100.7	95.3	0.449	0.402	0.260	0.348	-0.0024

## Beam Details



**Beam Intensities from 1-20m**

m	1	2	3	4	5	6	7	8	9	10	11	12	13	14	15	16	17	18	19	20
ft	3.3	6.6	9.8	13.1	16.4	19.7	23	26.2	29.5	32.8	36.1	39.4	42.7	45.9	49.2	52.5	55.8	59.1	62.3	65.6
lx	2992	748	332	187	120	83	61	47	37	30	25	21	18	15	13	12	10	9	8	7
fcd	277.9	69.5	30.9	17.4	11.1	7.7	5.7	4.3	3.4	2.8	2.3	1.9	1.6	1.4	1.2	1.1	1	0.9	0.8	0.7

**Intensities in 0° C-plane**

0°	2°	4°	6°	8°	10°	12°	14°	16°	18°	20°	22°	24°	26°	28°	30°	32°	34°	36°	38°
2992	2976	2937	2876	2787	2679	2559	2428	2289	2147	2004	1864	1728	1597	1472	1359	1254	1155	977	765
100%	99%	98%	96%	93%	90%	86%	81%	77%	72%	67%	62%	58%	53%	49%	45%	42%	39%	33%	26%

**Intensities in 90° C-plane**

0°	2°	4°	6°	8°	10°	12°	14°	16°	18°	20°	22°	24°	26°	28°	30°	32°	34°	36°	38°
2992	2976	2937	2876	2787	2679	2559	2428	2289	2147	2004	1864	1728	1597	1472	1359	1254	1155	977	765
100%	99%	98%	96%	93%	90%	86%	81%	77%	72%	67%	62%	58%	53%	49%	45%	42%	39%	33%	26%

**Intensities in 180° C-plane**

0°	2°	4°	6°	8°	10°	12°	14°	16°	18°	20°	22°	24°	26°	28°	30°	32°	34°	36°	38°
2992	2968	2922	2856	2764	2654	2534	2407	2270	2131	1992	1856	1724	1595	1472	1361	1251	1140	942	719
100%	99%	98%	95%	92%	89%	85%	80%	76%	71%	67%	62%	58%	53%	49%	45%	42%	38%	31%	24%

**Intensities in 270° C-plane**

0°	2°	4°	6°	8°	10°	12°	14°	16°	18°	20°	22°	24°	26°	28°	30°	32°	34°	36°	38°
2992	2968	2922	2856	2764	2654	2534	2407	2270	2131	1992	1856	1724	1595	1472	1361	1251	1140	942	719
100%	99%	98%	95%	92%	89%	85%	80%	76%	71%	67%	62%	58%	53%	49%	45%	42%	38%	31%	24%

Beam Angle 50%	Field Angle 10%	Cutoff Angle 2,5%	Intensity Ratio in 120° Cone	Intensity Ratio in 90° Cone
55.2°	84.1°	102.4°	99.1%	95.5%