

Par Z120 RGBW



Light Efficiency:



Light Quality:



Color Temperature:



Output: 721 lm

Peak: 53444 cd

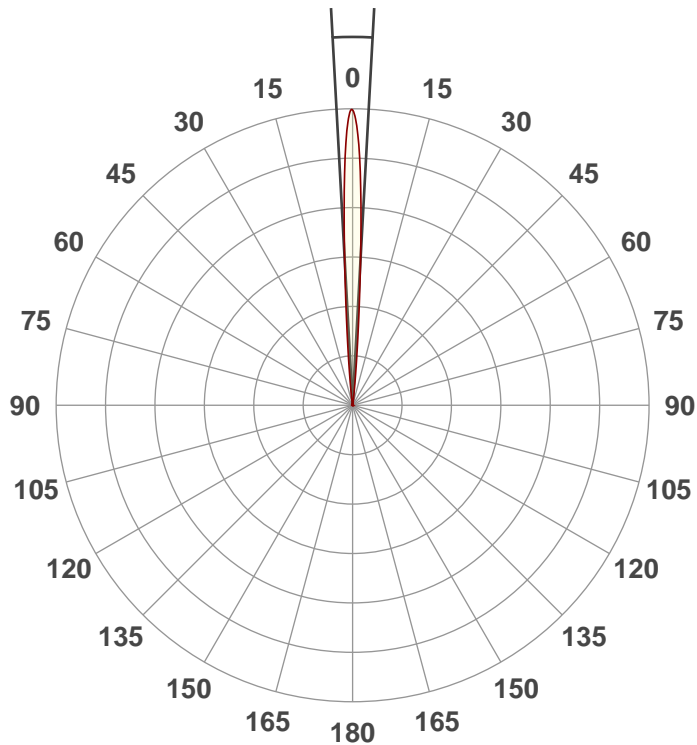
Power: 35.9 W

PF: 0.61



Beam Angle

6.2°



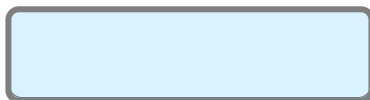
Test:

7deg White

Date:

8/15/2018

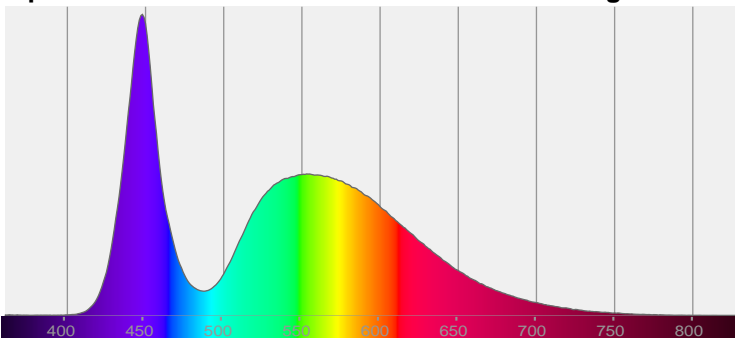
Note:



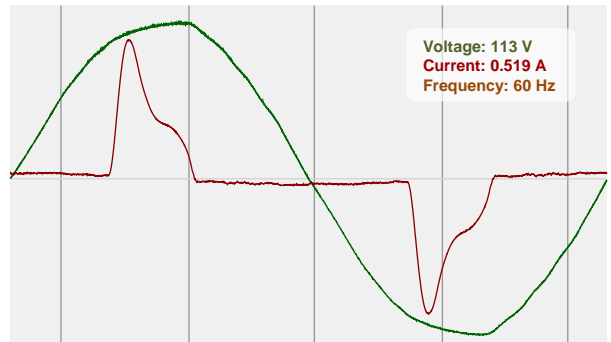
CIE 1931
x: 0.313
y: 0.317

Spectra

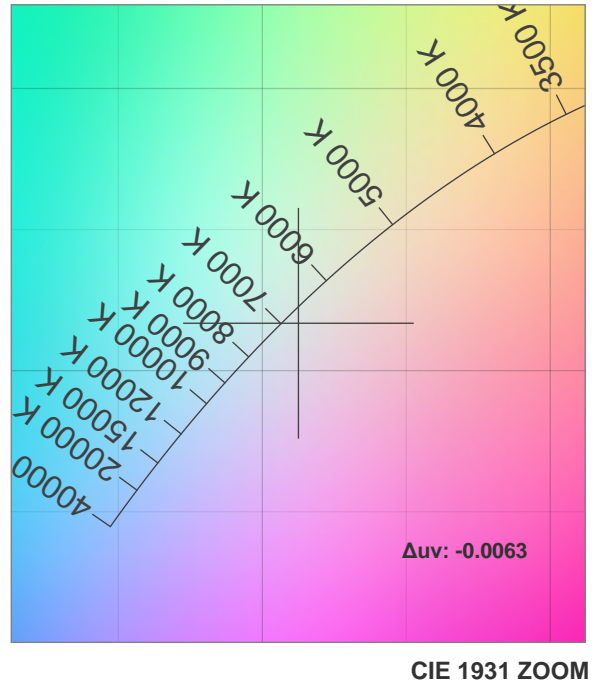
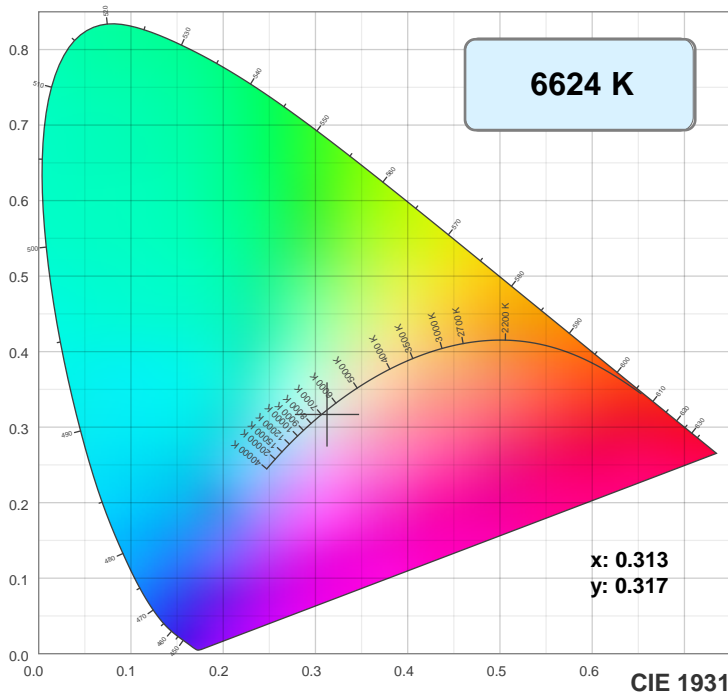
Dominant Wavelength: 360nm



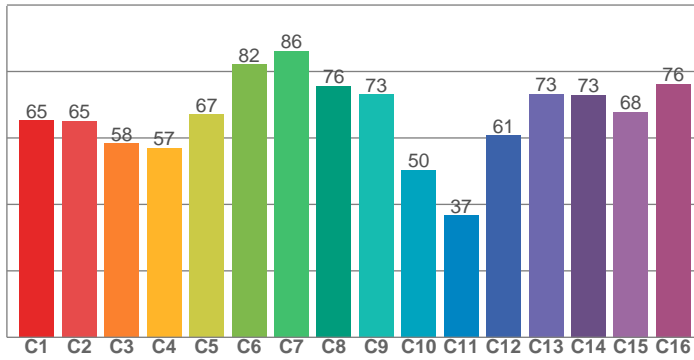
Power



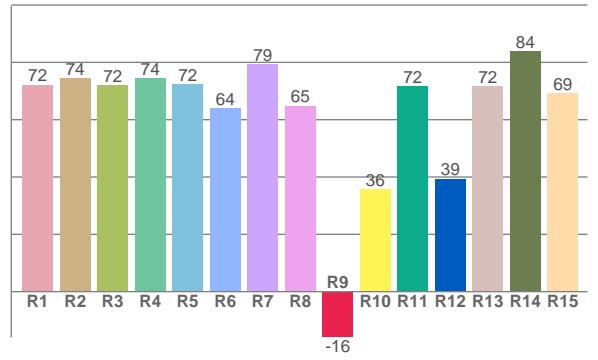
Color Details



TM30: 66.1



CRI: 71.7 (R1-R8)



CRI R values, only R1-R8 are used to calculate final CRI value

R1	R2	R3	R4	R5	R6	R7	R8	R9	R10	R11	R12	R13	R14	R15
72.2	74.5	72.0	74.5	72.3	63.9	79.4	64.9	-15.9	35.6	71.7	39.3	71.6	83.8	69.2

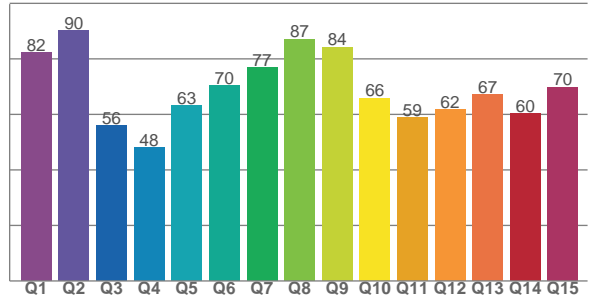
TM30 C values, 16 binned values out of total of 99 C values

C1	C2	C3	C4	C5	C6	C7	C8	C9	C10	C11	C12	C13	C14	C15	C16
65.2	65.1	58.3	57.0	67.0	82.1	86.2	75.7	73.2	50.4	36.7	60.8	73.3	72.9	67.9	76.3

CQS Q values

Q1	Q2	Q3	Q4	Q5	Q6	Q7	Q8	Q9	Q10	Q11	Q12	Q13	Q14	Q15
82.3	90.2	56.0	48.0	63.2	70.4	76.8	87.0	84.2	65.9	58.8	61.7	67.1	60.2	69.8

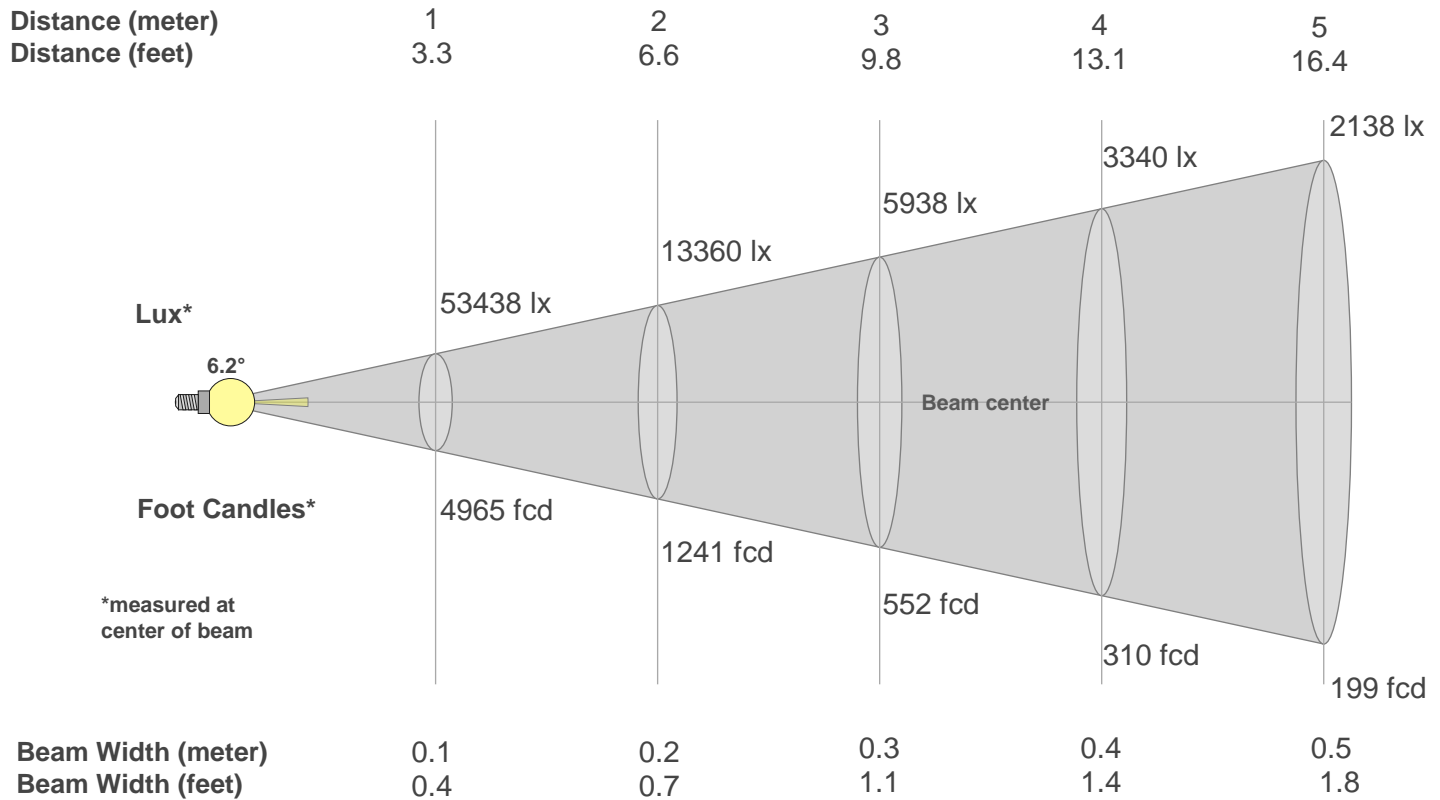
CQS: 67.2



Color Parameters

Color Temperature	Color Rendering Index	Red Component	Color Fidelity	Color Gamut	Color Quality Scale	Color Coordinate CIE 1931	Color Coordinate CIE 1931	Color Coordinate	Color Coordinate	Color Deviation from Black Body
CCT	CRI	CRI R9	TM30 Rf	TM30 Rg	CQS	x	y	u	v	Δuv
6624 K	71.7	-15.9	66.1	95.4	67.2	0.313	0.317	0.202	0.308	-0.0063

Beam Details



Beam Intensities from 1-20m

m	1	2	3	4	5	6	7	8	9	10	11	12	13	14	15	16	17	18	19	20
ft	3.3	6.6	9.8	13.1	16.4	19.7	23	26.2	29.5	32.8	36.1	39.4	42.7	45.9	49.2	52.5	55.8	59.1	62.3	65.6
lx	53438	13360	5938	3340	2138	1484	1091	835	660	534	442	371	316	273	238	209	185	165	148	134
fcd	4964.6	1241.1	551.6	310.3	198.6	137.9	101.3	77.6	61.3	49.6	41	34.5	29.4	25.3	22.1	19.4	17.2	15.3	13.8	12.4

Intensities in 0° C-plane

0°	1°	2°	3°	4°	5°	6°	7°	8°	9°	10°	11°	12°	13°	14°	15°	16°	17°	18°	19°
53.4K	51.0K	41.8K	28.2K	16.2K	8.4K	4.0K	1.8K	0.8K	0.3K	0.1K	0.0K	0.0K	0.0K	0.0K	0.0K	0.0K	0.0K	0.0K	0.0K
100%	95%	78%	53%	30%	16%	7%	3%	1%	1%	0%	0%	0%	0%	0%	0%	0%	0%	0%	0%

Intensities in 90° C-plane

0°	1°	2°	3°	4°	5°	6°	7°	8°	9°	10°	11°	12°	13°	14°	15°	16°	17°	18°	19°
53.4K	51.0K	41.8K	28.2K	16.2K	8.4K	4.0K	1.8K	0.8K	0.3K	0.1K	0.0K	0.0K	0.0K	0.0K	0.0K	0.0K	0.0K	0.0K	0.0K
100%	95%	78%	53%	30%	16%	7%	3%	1%	1%	0%	0%	0%	0%	0%	0%	0%	0%	0%	0%

Intensities in 180° C-plane

0°	1°	2°	3°	4°	5°	6°	7°	8°	9°	10°	11°	12°	13°	14°	15°	16°	17°	18°	19°
53.4K	49.7K	40.9K	28.2K	16.3K	8.4K	3.9K	1.8K	0.8K	0.4K	0.1K	0.0K	0.0K	0.0K	0.0K	0.0K	0.0K	0.0K	0.0K	0.0K
100%	93%	76%	53%	31%	16%	7%	3%	2%	1%	0%	0%	0%	0%	0%	0%	0%	0%	0%	0%

Intensities in 270° C-plane

0°	1°	2°	3°	4°	5°	6°	7°	8°	9°	10°	11°	12°	13°	14°	15°	16°	17°	18°	19°
53.4K	49.7K	40.9K	28.2K	16.3K	8.4K	3.9K	1.8K	0.8K	0.4K	0.1K	0.0K	0.0K	0.0K	0.0K	0.0K	0.0K	0.0K	0.0K	0.0K
100%	93%	76%	53%	31%	16%	7%	3%	2%	1%	0%	0%	0%	0%	0%	0%	0%	0%	0%	0%

Beam Angle 50%	Field Angle 10%	Cutoff Angle 2,5%	Intensity Ratio in 120° Cone	Intensity Ratio in 90° Cone
6.2°	11.2°	14.7°	99.9%	99.9%