

7P Hex IP



Light Efficiency:

36 Lumen/Watt

Light Quality:

CRI: 64.9

Color Temperature:

16057 K

Output: 1666 lm

Peak: 8836 cd

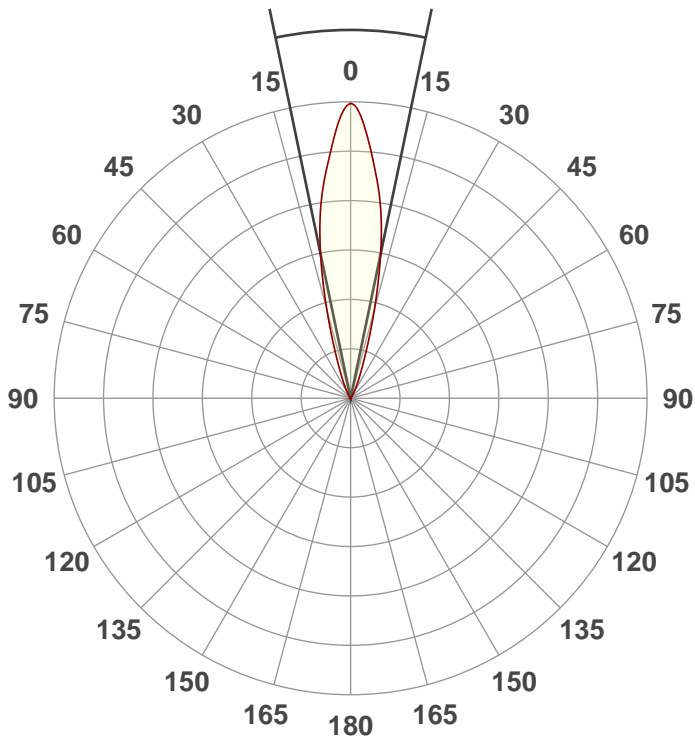
Power: 46.7 W

PF: 0.99



Beam Angle

23.5°



Test:

Full On No UV

Date:

6/20/2018

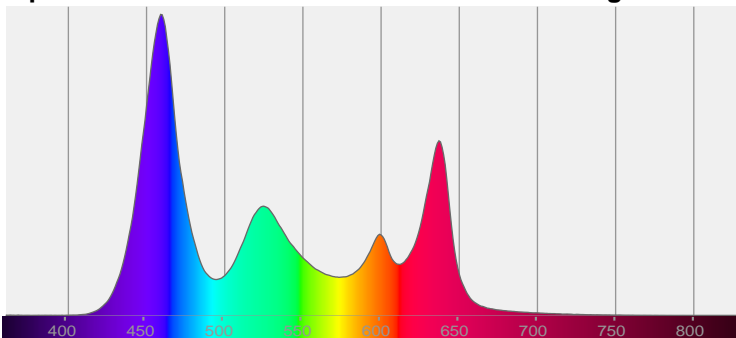
Note:



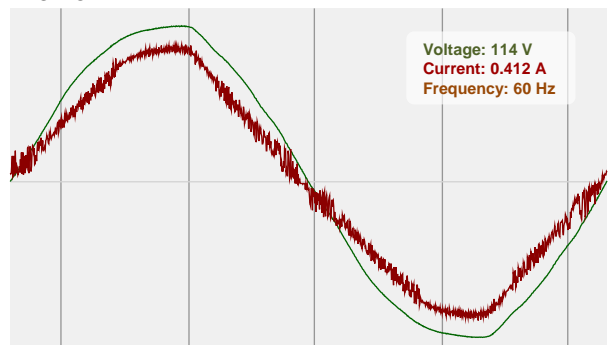
CIE 1931
x: 0.278
y: 0.246

Spectra

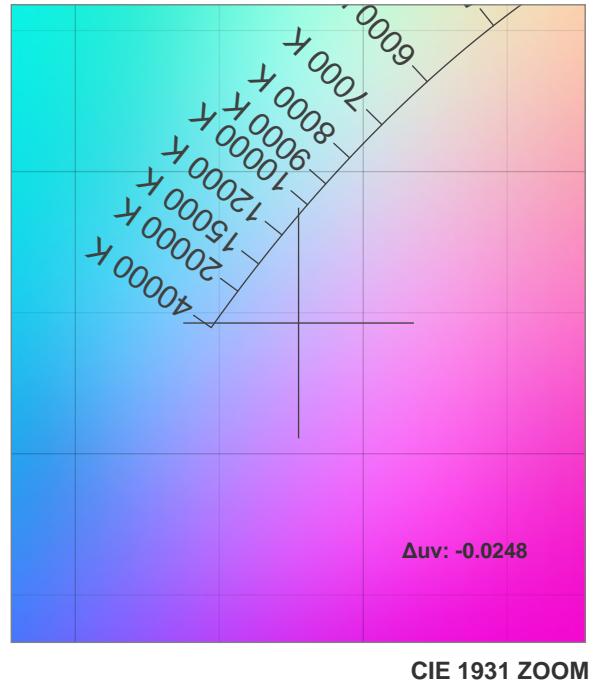
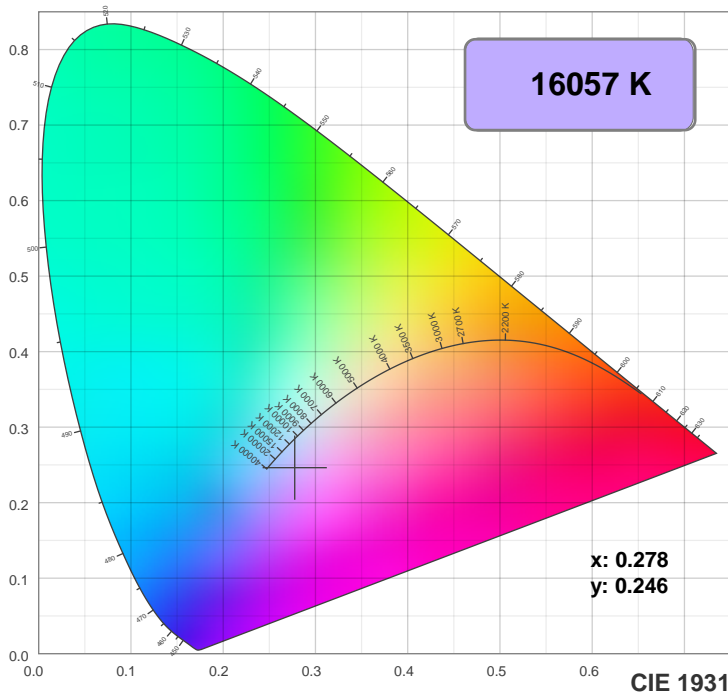
Dominant Wavelength: 368nm



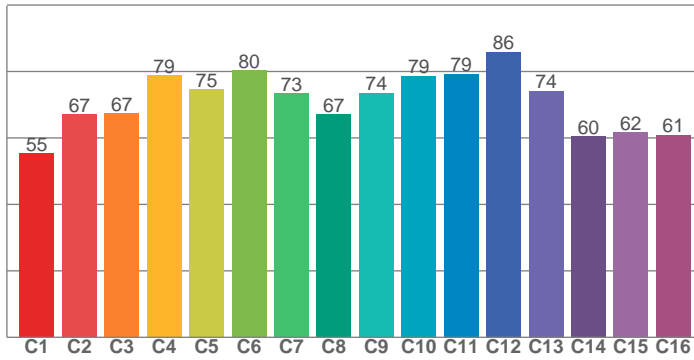
Power



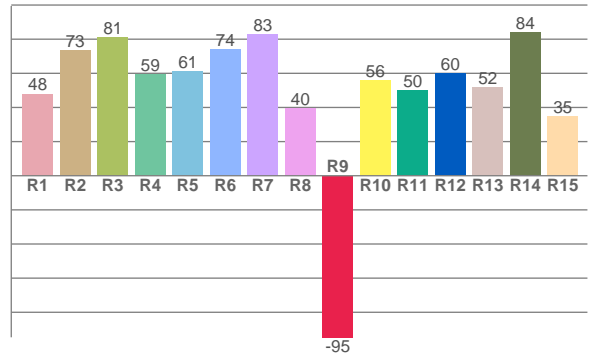
Color Details



TM30: 72.1



CRI: 64.9 (R1-R8)



CRI R values, only R1-R8 are used to calculate final CRI value

R1	R2	R3	R4	R5	R6	R7	R8	R9	R10	R11	R12	R13	R14	R15
48.0	73.5	81.1	59.3	61.1	74.1	82.7	39.7	-94.7	55.7	50.2	59.8	51.9	83.8	34.6

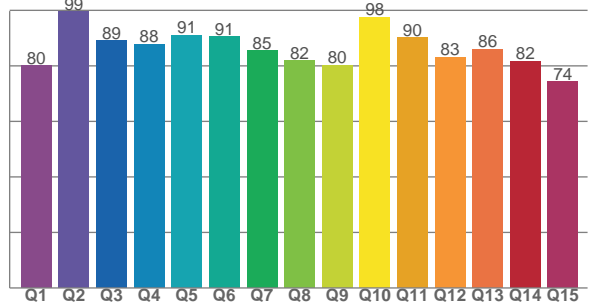
TM30 C values, 16 binned values out of total of 99 C values

C1	C2	C3	C4	C5	C6	C7	C8	C9	C10	C11	C12	C13	C14	C15	C16
55.3	67.1	67.4	78.8	74.7	80.3	73.4	67.1	73.6	78.7	79.3	85.9	74.2	60.5	61.6	60.9

CQS Q values

Q1	Q2	Q3	Q4	Q5	Q6	Q7	Q8	Q9	Q10	Q11	Q12	Q13	Q14	Q15
80.0	99.5	89.1	87.9	91.1	90.6	85.5	81.9	80.3	97.6	90.2	83.1	86.1	81.7	74.4

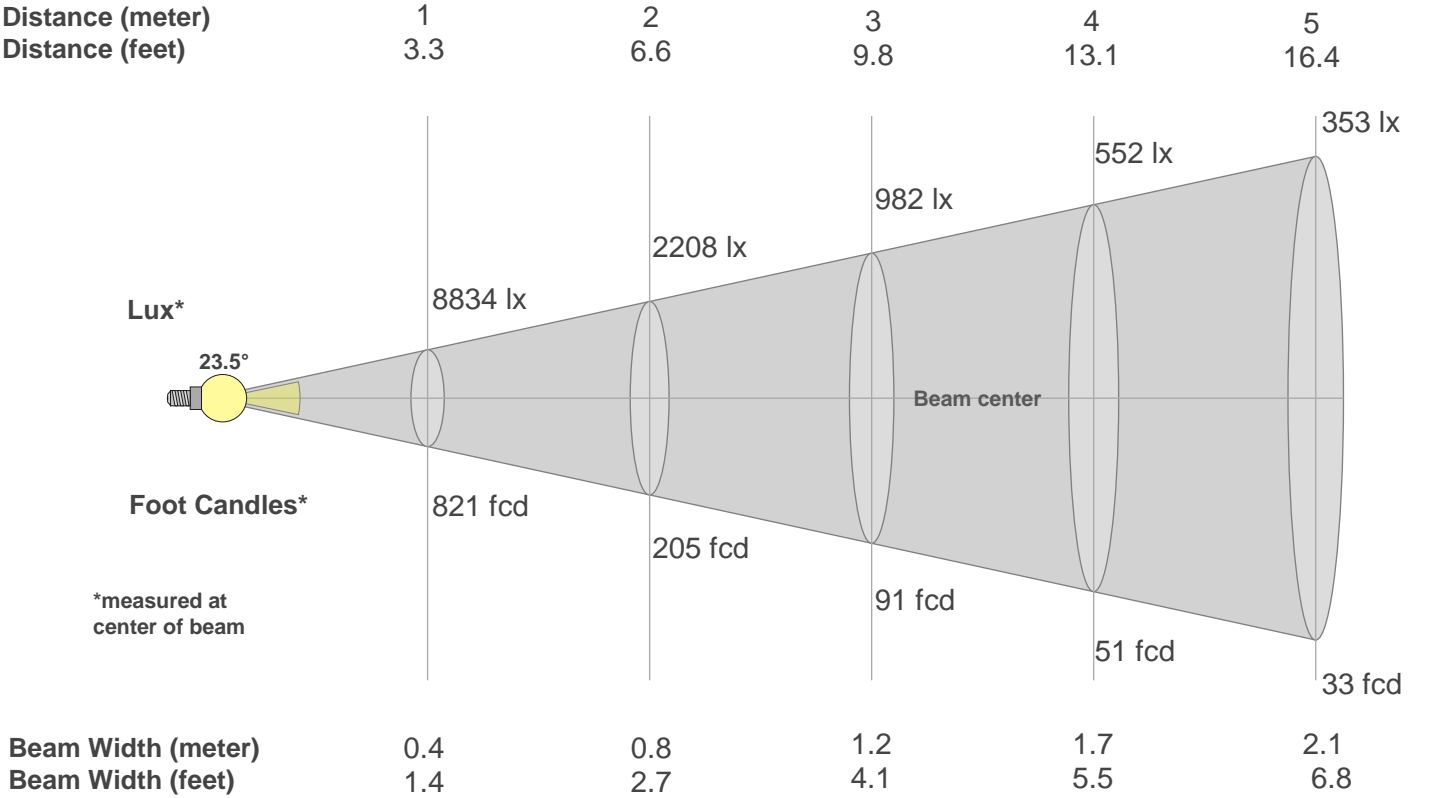
CQS: 85.1



Color Parameters

Color Temperature	Color Rendering Index	Red Component	Color Fidelity	Color Gamut	Color Quality Scale	Color Coordinate CIE 1931	Color Coordinate CIE 1931	Color Coordinate	Color Coordinate	Color Deviation from Black Body
CCT	CRI	CRI R9	TM30 Rf	TM30 Rg	CQS	x	y	u	v	Δuv
16057 K	64.9	-94.7	72.1	109.7	85.1	0.278	0.246	0.206	0.274	-0.0248

Beam Details



Beam Intensities from 1-20m																				
m	1	2	3	4	5	6	7	8	9	10	11	12	13	14	15	16	17	18	19	20
ft	3.3	6.6	9.8	13.1	16.4	19.7	23	26.2	29.5	32.8	36.1	39.4	42.7	45.9	49.2	52.5	55.8	59.1	62.3	65.6
lx	8834	2208	982	552	353	245	180	138	109	88	73	61	52	45	39	35	31	27	24	22
fcd	820.7	205.2	91.2	51.3	32.8	22.8	16.7	12.8	10.1	8.2	6.8	5.7	4.9	4.2	3.6	3.2	2.8	2.5	2.3	2.1

Intensities in 0° C-plane																			
0°	2°	4°	6°	8°	10°	12°	14°	16°	18°	20°	22°	24°	26°	28°	30°	32°	34°	36°	38°
8834	8454	7680	6909	6157	5292	4294	3252	2310	1570	1070	753	533	371	245	156	96	69	46	33
100%	96%	87%	78%	70%	60%	49%	37%	26%	18%	12%	9%	6%	4%	3%	2%	1%	1%	1%	0%

Intensities in 90° C-plane																				
0°	2°	4°	6°	8°	10°	12°	14°	16°	18°	20°	22°	24°	26°	28°	30°	32°	34°	36°	38°	
8834	8454	7680	6909	6157	5292	4294	3252	2310	1570	1070	753	533	371	245	156	96	69	46	33	
100%	96%	87%	78%	70%	60%	49%	37%	26%	18%	12%	9%	6%	4%	3%	2%	1%	1%	1%	0%	

Intensities in 180° C-plane																				
0°	2°	4°	6°	8°	10°	12°	14°	16°	18°	20°	22°	24°	26°	28°	30°	32°	34°	36°	38°	
8834	8484	7727	6930	6167	5300	4291	3247	2315	1583	1082	762	547	383	255	162	100	70	46	35	
100%	96%	87%	78%	70%	60%	49%	37%	26%	18%	12%	9%	6%	4%	3%	2%	1%	1%	1%	0%	

Intensities in 270° C-plane																			
0°	2°	4°	6°	8°	10°	12°	14°	16°	18°	20°	22°	24°	26°	28°	30°	32°	34°	36°	38°
8834	8484	7727	6930	6167	5300	4291	3247	2315	1583	1082	762	547	383	255	162	100	70	46	35
100%	96%	87%	78%	70%	60%	49%	37%	26%	18%	12%	9%	6%	4%	3%	2%	1%	1%	1%	0%

Beam Angle 50%	Field Angle 10%	Cutoff Angle 2,5%	Intensity Ratio in 120° Cone	Intensity Ratio in 90° Cone
23.5°	42.2°	57.2°	99.9%	99.6%