



Light Efficiency:

30 Lumen/Watt

Light Quality:

CRI: 73.8

Color Temperature:

7782 K

Output: 11248 lm

Peak: 242771 cd

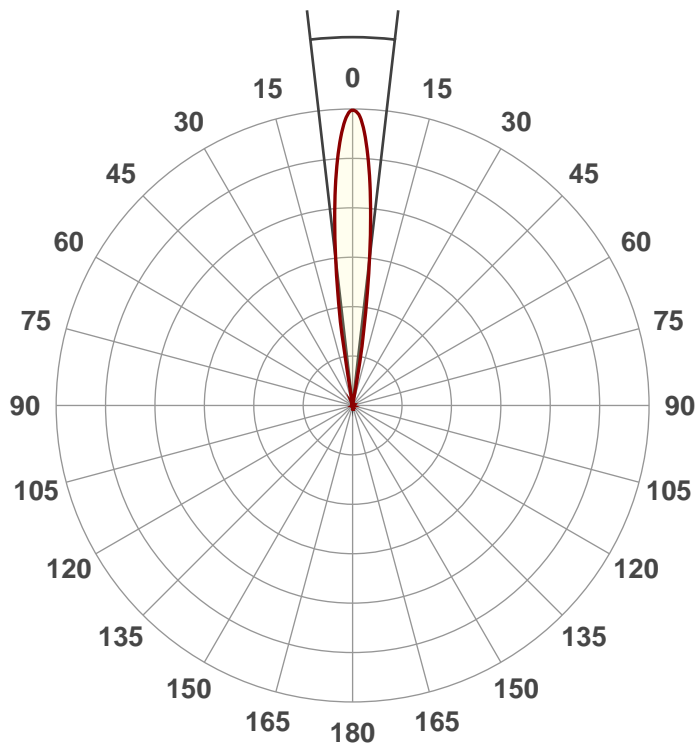
Power: 380 W

PF: 1.0



Beam Angle

13.2°

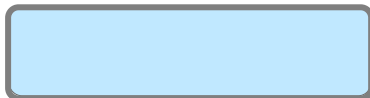


Product Name:  
**VIZI 300CMY**

Test:  
**Zoom 50%**

Date:  
**1/17/2018**

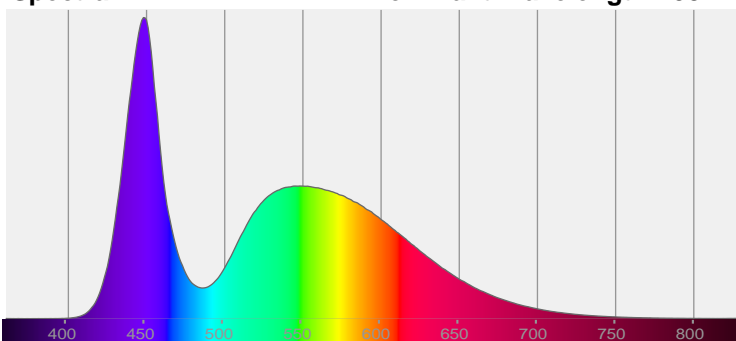
Note:



CIE 1931  
x: 0.299  
y: 0.303

Spectra

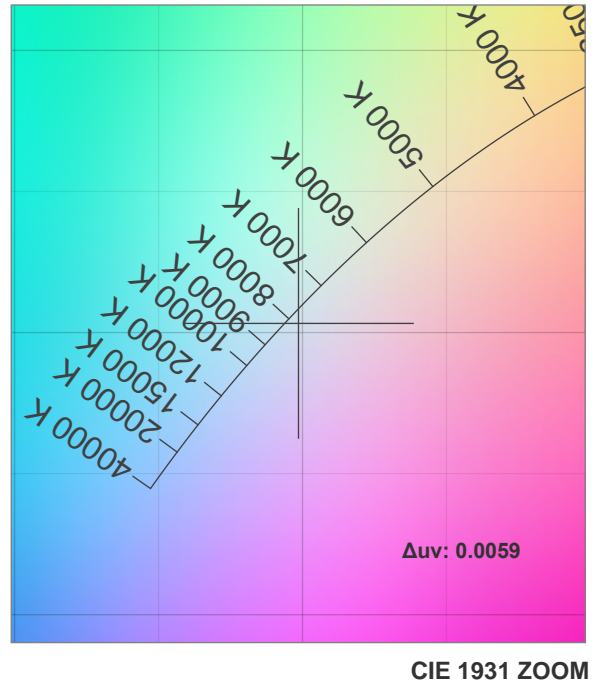
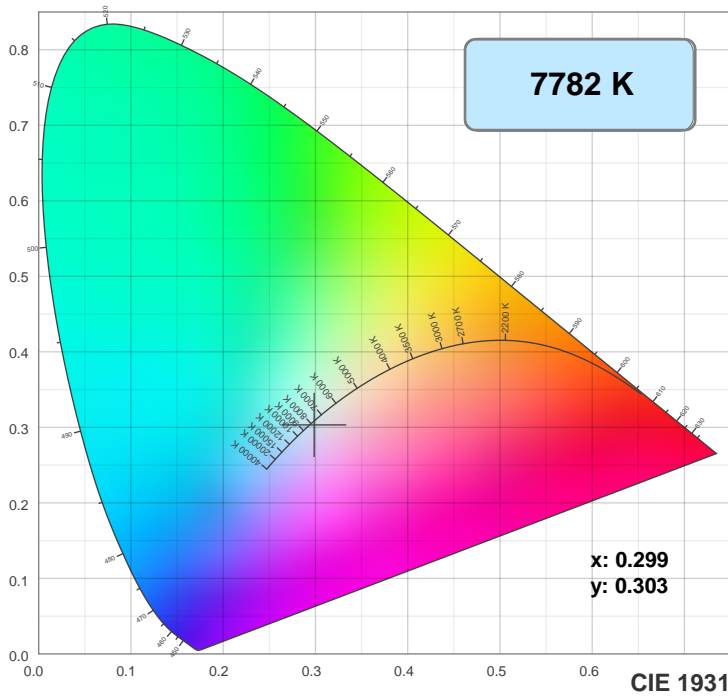
Dominant Wavelength: 458nm



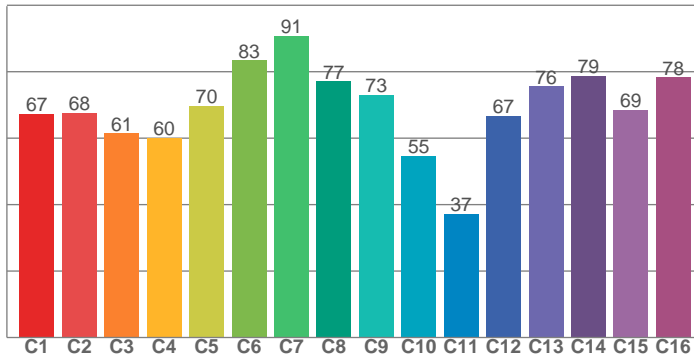
Power

Voltage: 116 V				
Current: 3.26 A				
Frequency: 0 Hz				

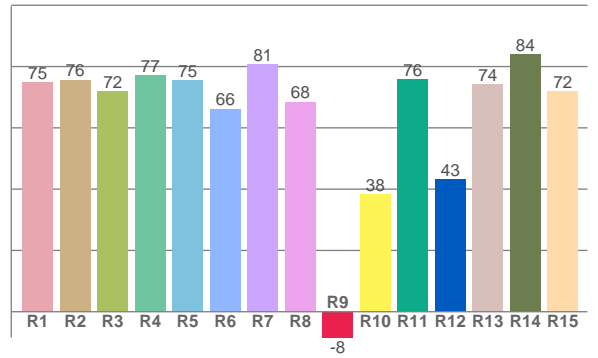
## Color Details



TM30: 68.4



CRI: 73.8 (R1-R8)



CRI R values, only R1-R8 are used to calculate final CRI value

R1	R2	R3	R4	R5	R6	R7	R8	R9	R10	R11	R12	R13	R14	R15
74.9	75.7	72.0	77.1	75.4	66.2	80.6	68.5	-8.4	38.4	75.9	43.2	74.1	84.0	72.0

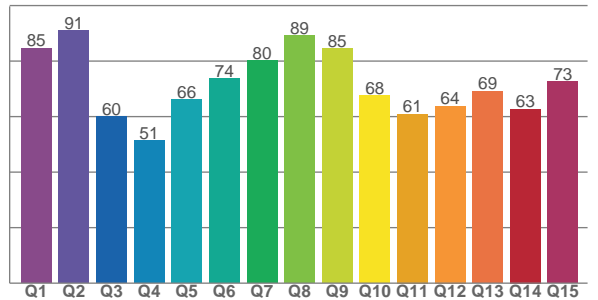
TM30 C values, 16 binned values out of total of 99 C values

C1	C2	C3	C4	C5	C6	C7	C8	C9	C10	C11	C12	C13	C14	C15	C16
67.3	67.7	61.5	60.1	69.7	83.4	90.7	77.1	73.0	54.7	37.3	66.8	75.6	78.8	68.6	78.3

CQS Q values

Q1	Q2	Q3	Q4	Q5	Q6	Q7	Q8	Q9	Q10	Q11	Q12	Q13	Q14	Q15
84.6	90.9	60.0	51.3	66.2	73.7	80.1	89.2	84.6	67.6	61.0	63.9	69.1	62.7	72.5

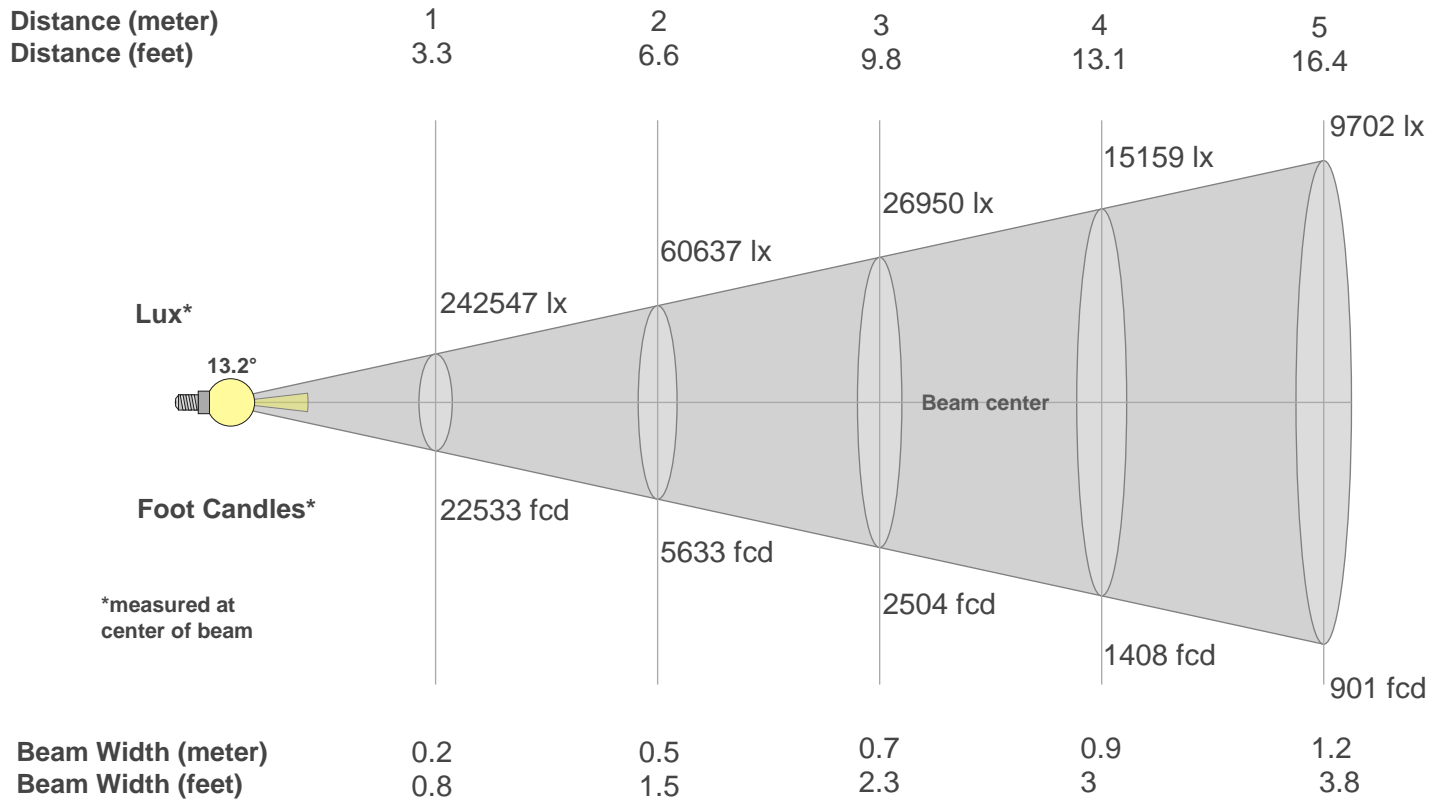
CQS: 69.6



## Color Parameters

Color Temperature	Color Rendering Index	Red Component	Color Fidelity	Color Gamut	Color Quality Scale	Color Coordinate CIE 1931	Color Coordinate CIE 1931	Color Coordinate	Color Coordinate	Color Deviation from Black Body
CCT	CRI	CRI R9	TM30 Rf	TM30 Rg	CQS	x	y	u	v	$\Delta uv$
7782 K	73.8	-8.4	68.4	95.4	69.6	0.299	0.303	0.198	0.301	0.0059

## Beam Details



Beam Intensities from 1-20m

m	1	2	3	4	5	6	7	8	9	10	11	12	13	14	15	16	17	18	19	20
ft	3.3	6.6	9.8	13.1	16.4	19.7	23	26.2	29.5	32.8	36.1	39.4	42.7	45.9	49.2	52.5	55.8	59.1	62.3	65.6
lx	242547	60637	26950	15159	9702	6737	4950	3790	2994	2425	2005	1684	1435	1237	1078	947	839	749	672	606
fcd	22533.4	5633.3	2503.7	1408.3	901.3	625.9	459.9	352.1	278.2	225.3	186.2	156.5	133.3	115	100.1	88	78	69.5	62.4	56.3

Intensities in 0° C-plane

0°	1°	2°	3°	4°	5°	6°	7°	8°	9°	10°	11°	12°	13°	14°	15°	16°	17°	18°	19°
243K	239K	228K	212K	192K	167K	139K	108K	76K	31K	0K	0K	0K	0K	0K	0K	0K	0K	0K	0K
100%	98%	94%	88%	79%	69%	57%	45%	31%	13%	0%	0%	0%	0%	0%	0%	0%	0%	0%	0%

Intensities in 90° C-plane

0°	1°	2°	3°	4°	5°	6°	7°	8°	9°	10°	11°	12°	13°	14°	15°	16°	17°	18°	19°
243K	239K	228K	212K	192K	167K	139K	108K	76K	31K	0K	0K	0K	0K	0K	0K	0K	0K	0K	0K
100%	98%	94%	88%	79%	69%	57%	45%	31%	13%	0%	0%	0%	0%	0%	0%	0%	0%	0%	0%

Intensities in 180° C-plane

0°	1°	2°	3°	4°	5°	6°	7°	8°	9°	10°	11°	12°	13°	14°	15°	16°	17°	18°	19°
243K	240K	231K	215K	194K	169K	139K	108K	76K	48K	17K	1K	0K	0K	0K	0K	0K	0K	0K	0K
100%	99%	95%	89%	80%	70%	58%	45%	31%	20%	7%	0%	0%	0%	0%	0%	0%	0%	0%	0%

Intensities in 270° C-plane

0°	1°	2°	3°	4°	5°	6°	7°	8°	9°	10°	11°	12°	13°	14°	15°	16°	17°	18°	19°
243K	240K	231K	215K	194K	169K	139K	108K	76K	48K	17K	1K	0K	0K	0K	0K	0K	0K	0K	0K
100%	99%	95%	89%	80%	70%	58%	45%	31%	20%	7%	0%	0%	0%	0%	0%	0%	0%	0%	0%

Beam Angle 50%	Field Angle 10%	Cutoff Angle 2,5%	Intensity Ratio in 120° Cone	Intensity Ratio in 90° Cone
13.2°	18.9°	19.7°	98.4%	97.9%