



Light Efficiency:

55 Lumen/Watt

Light Quality:

CRI: 72.0

Color Temperature:

6695 K

Output: 872 lm

Peak: 4435 cd

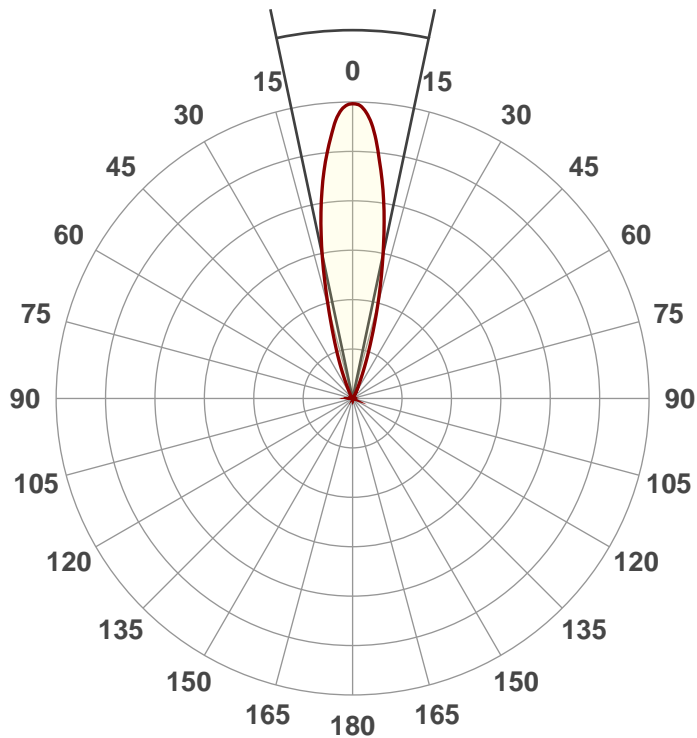
Power: 15.7 W

PF: 0.55



Beam Angle

23.9°



Product Name:

UB 12H

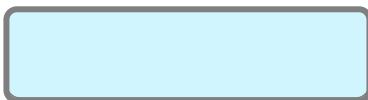
Test:

White

Date:

4/19/2018

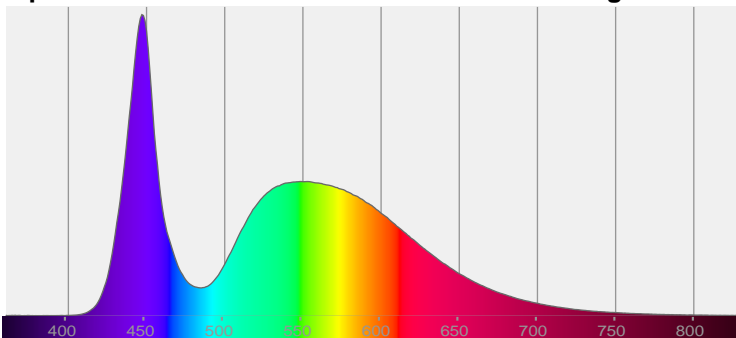
Note:



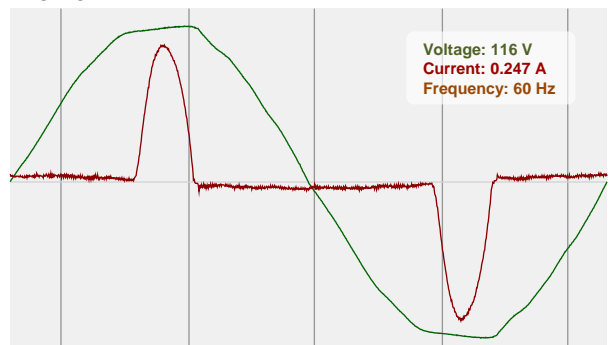
CIE 1931  
x: 0.311  
y: 0.322

Spectra

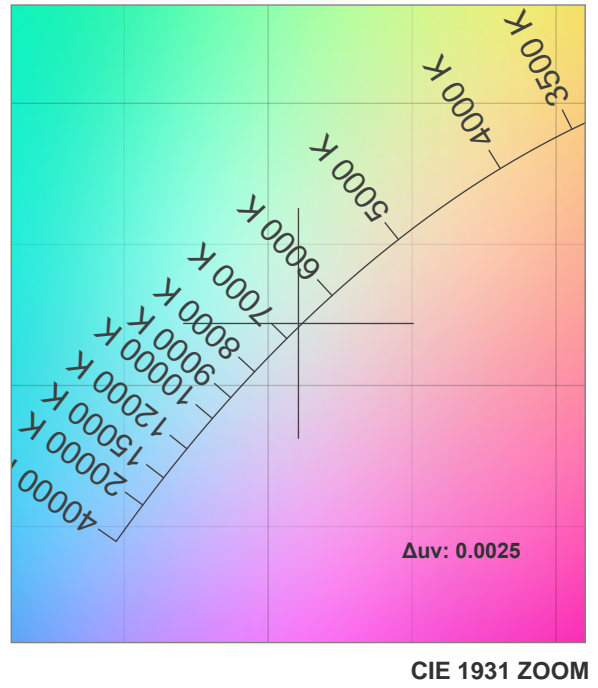
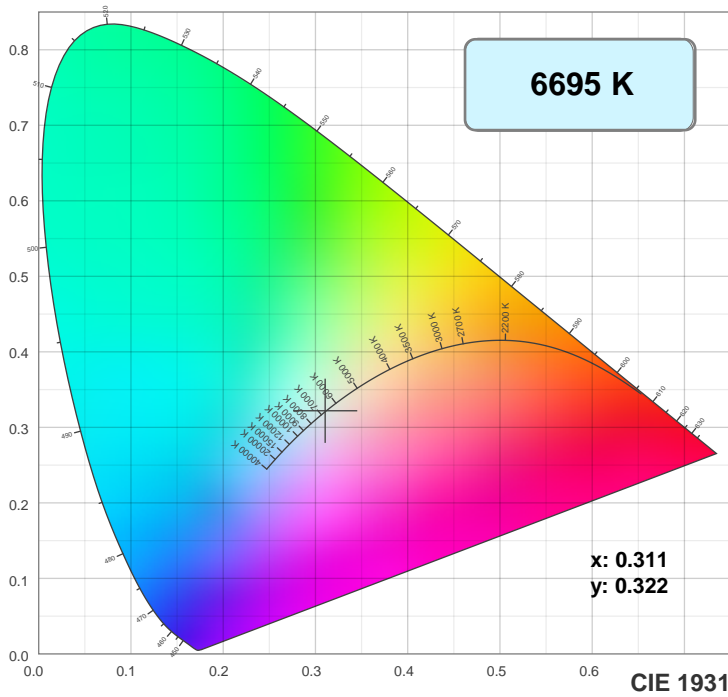
Dominant Wavelength: 360nm



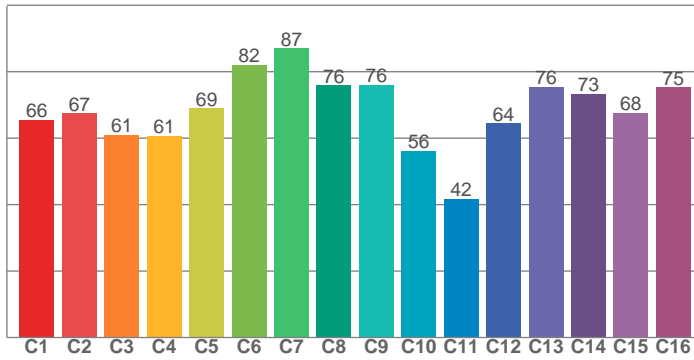
Power



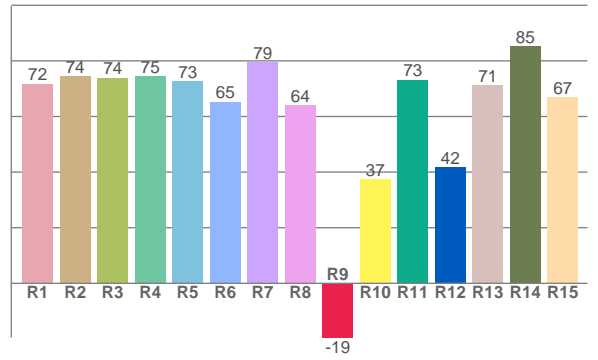
## Color Details



TM30: 68.2



CRI: 72.0 (R1-R8)



CRI R values, only R1-R8 are used to calculate final CRI value

R1	R2	R3	R4	R5	R6	R7	R8	R9	R10	R11	R12	R13	R14	R15
71.7	74.4	73.9	74.6	72.7	65.3	79.4	64.1	-19.5	37.3	73.2	41.8	71.3	85.2	67.0

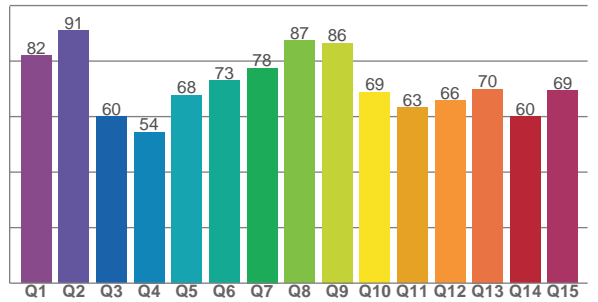
TM30 C values, 16 binned values out of total of 99 C values

C1	C2	C3	C4	C5	C6	C7	C8	C9	C10	C11	C12	C13	C14	C15	C16
65.5	67.5	61.0	60.8	69.0	82.1	87.0	75.9	76.1	56.3	41.8	64.5	75.5	73.4	67.6	75.3

CQS Q values

Q1	Q2	Q3	Q4	Q5	Q6	Q7	Q8	Q9	Q10	Q11	Q12	Q13	Q14	Q15
81.9	91.1	60.0	54.4	67.8	73.0	77.6	87.3	86.5	68.8	63.3	65.8	69.9	60.0	69.4

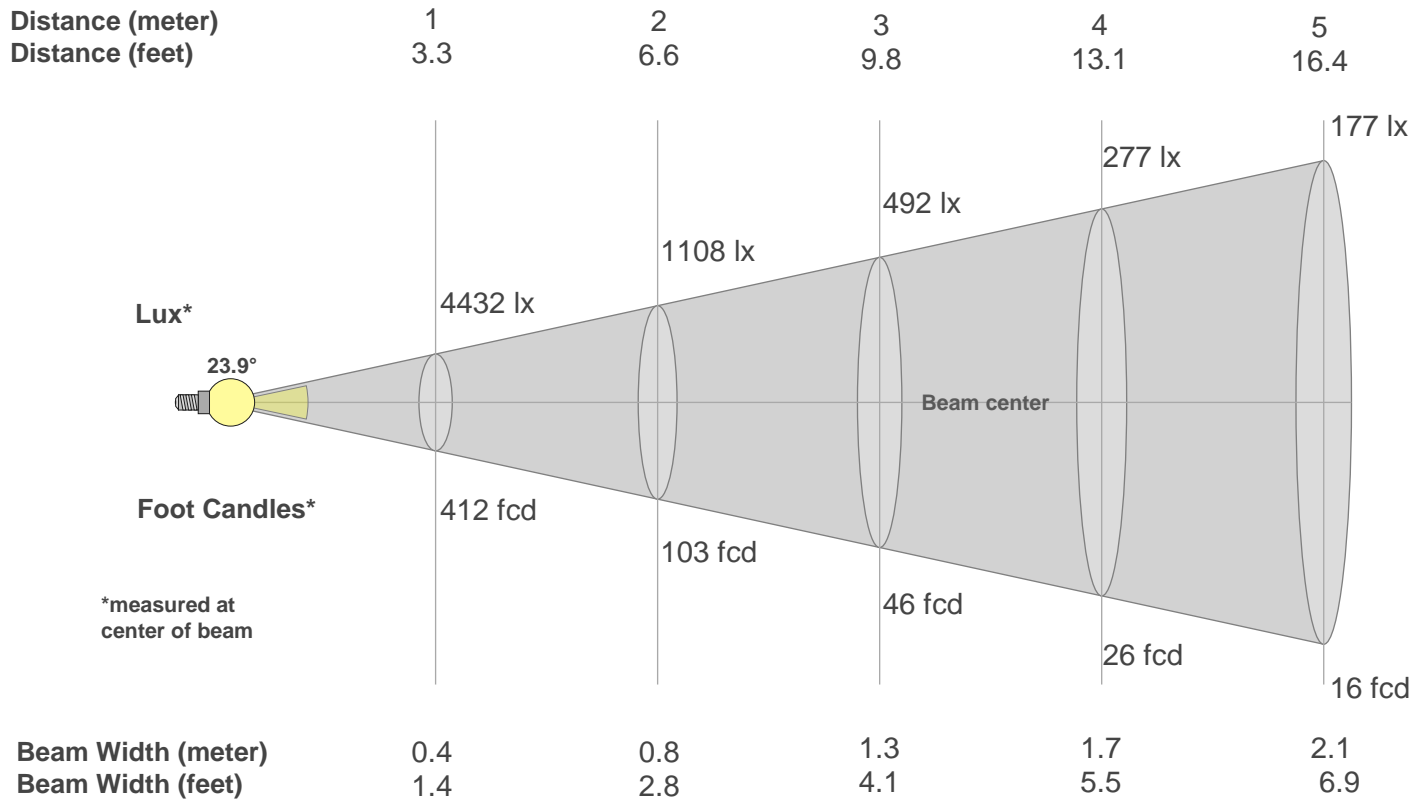
CQS: 69.9



## Color Parameters

Color Temperature	Color Rendering Index	Red Component	Color Fidelity	Color Gamut	Color Quality Scale	Color Coordinate CIE 1931	Color Coordinate CIE 1931	Color Coordinate	Color Coordinate	Color Deviation from Black Body
CCT	CRI	CRI R9	TM30 Rf	TM30 Rg	CQS	x	y	u	v	$\Delta uv$
6695 K	72.0	-19.5	68.2	95.7	69.9	0.311	0.322	0.199	0.309	0.0025

## Beam Details



Beam Intensities from 1-20m

m	1	2	3	4	5	6	7	8	9	10	11	12	13	14	15	16	17	18	19	20
ft	3.3	6.6	9.8	13.1	16.4	19.7	23	26.2	29.5	32.8	36.1	39.4	42.7	45.9	49.2	52.5	55.8	59.1	62.3	65.6
lx	4432	1108	492	277	177	123	90	69	55	44	37	31	26	23	20	17	15	14	12	11
fcd	411.7	102.9	45.7	25.7	16.5	11.4	8.4	6.4	5.1	4.1	3.4	2.9	2.4	2.1	1.8	1.6	1.4	1.3	1.1	1

Intensities in 0° C-plane

0°	2°	4°	6°	8°	10°	12°	14°	16°	18°	20°	22°	24°	26°	28°	30°	32°	34°	36°	38°
4432	4361	4093	3699	3252	2745	2198	1645	1177	832	570	361	223	144	92	61	41	32	26	20
100%	98%	92%	83%	73%	62%	50%	37%	27%	19%	13%	8%	5%	3%	2%	1%	1%	1%	1%	0%

Intensities in 90° C-plane

0°	2°	4°	6°	8°	10°	12°	14°	16°	18°	20°	22°	24°	26°	28°	30°	32°	34°	36°	38°
4432	4361	4093	3699	3252	2745	2198	1645	1177	832	570	361	223	144	92	61	41	32	26	20
100%	98%	92%	83%	73%	62%	50%	37%	27%	19%	13%	8%	5%	3%	2%	1%	1%	1%	1%	0%

Intensities in 180° C-plane

0°	2°	4°	6°	8°	10°	12°	14°	16°	18°	20°	22°	24°	26°	28°	30°	32°	34°	36°	38°
4432	4367	4137	3707	3238	2732	2200	1706	1249	872	588	387	249	158	100	64	41	32	26	19
100%	99%	93%	84%	73%	62%	50%	38%	28%	20%	13%	9%	6%	4%	2%	1%	1%	1%	1%	0%

Intensities in 270° C-plane

0°	2°	4°	6°	8°	10°	12°	14°	16°	18°	20°	22°	24°	26°	28°	30°	32°	34°	36°	38°
4432	4367	4137	3707	3238	2732	2200	1706	1249	872	588	387	249	158	100	64	41	32	26	19
100%	99%	93%	84%	73%	62%	50%	38%	28%	20%	13%	9%	6%	4%	2%	1%	1%	1%	1%	0%

Beam Angle 50%	Field Angle 10%	Cutoff Angle 2,5%	Intensity Ratio in 120° Cone	Intensity Ratio in 90° Cone
23.9°	42.5°	54.7°	98.7%	97.9%